

**EVL Antibody (monoclonal) (M01)****Mouse monoclonal antibody raised against a partial recombinant EVL.****Catalog # AT1958a****Specification**

---

**EVL Antibody (monoclonal) (M01) - Product Information**

Application	IF, WB, E
Primary Accession	<a href="#">O9UI08</a>
Other Accession	<a href="#">NM_016337</a>
Reactivity	Human
Host	mouse
Clonality	Monoclonal
Isotype	IgG2a Kappa
Calculated MW	44620

**EVL Antibody (monoclonal) (M01) - Additional Information****Gene ID** 51466**Other Names**

Ena/VASP-like protein, Ena/vasodilator-stimulated phosphoprotein-like, EVL, RNB6

**Target/Specificity**

EVL (NP\_057421, 309 a.a. ~ 418 a.a) partial recombinant protein with GST tag. MW of the GST tag alone is 26 KDa.

**Dilution**

WB~~1:500~1000

**Format**

Clear, colorless solution in phosphate buffered saline, pH 7.2 .

**Storage**

Store at -20°C or lower. Aliquot to avoid repeated freezing and thawing.

**Precautions**

EVL Antibody (monoclonal) (M01) is for research use only and not for use in diagnostic or therapeutic procedures.

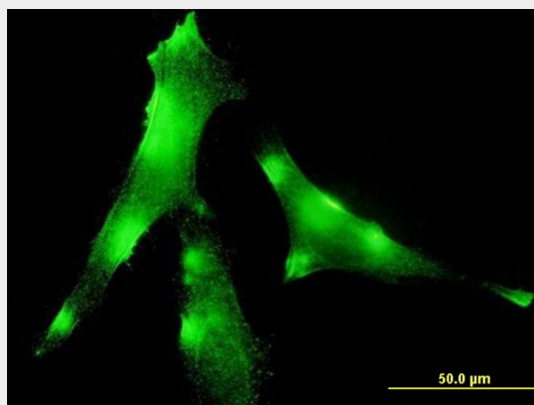
**EVL Antibody (monoclonal) (M01) - Protocols**

Provided below are standard protocols that you may find useful for product applications.

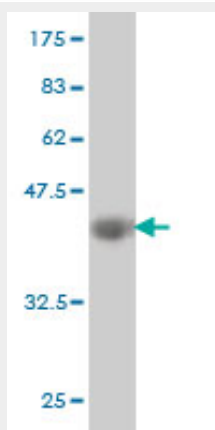
- [Western Blot](#)
- [Blocking Peptides](#)
- [Dot Blot](#)
- [Immunohistochemistry](#)

- [Immunofluorescence](#)
- [Immunoprecipitation](#)
- [Flow Cytometry](#)
- [Cell Culture](#)

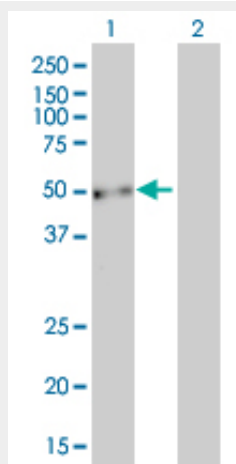
### EVL Antibody (monoclonal) (M01) - Images



Immunofluorescence of monoclonal antibody to EVL on HeLa cell . [antibody concentration 10 ug/ml]



Antibody Reactive Against Recombinant Protein. Western Blot detection against Immunogen (37.84 KDa) .

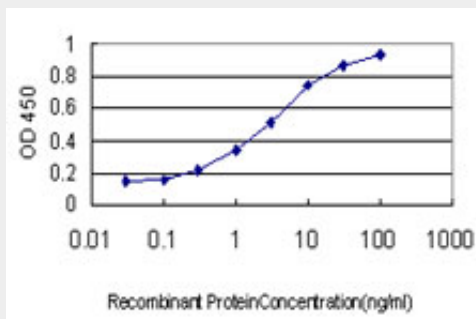


Western Blot analysis of EVL expression in transfected 293T cell line by EVL monoclonal antibody

(M01), clone 5G1.

Lane 1: EVL transfected lysate(45 kDa).

Lane 2: Non-transfected lysate.



Detection limit for recombinant GST tagged EVL is approximately 0.03ng/ml as a capture antibody.

#### **EVL Antibody (monoclonal) (M01) - References**

Personalized smoking cessation: interactions between nicotine dose, dependence and quit-success genotype score. Rose JE, et al. Mol Med, 2010 Jul-Aug. PMID 20379614. Biochemical analysis of the human EVL domains in homologous recombination. Takaku M, et al. FEBS J, 2009 Oct. PMID 19725871. Recombination activator function of the novel RAD51- and RAD51B-binding protein, human EVL. Takaku M, et al. J Biol Chem, 2009 May 22. PMID 19329439. EVL (Ena/VASP-like) expression is up-regulated in human breast cancer and its relative expression level is correlated with clinical stages. Hu LD, et al. Oncol Rep, 2008 Apr. PMID 18357390. Epigenetic silencing of the intronic microRNA hsa-miR-342 and its host gene EVL in colorectal cancer. Grady WM, et al. Oncogene, 2008 Jun 19. PMID 18264139.