

## **F2 Antibody (monoclonal) (M01)**

Mouse monoclonal antibody raised against a partial recombinant F2.

Catalog # AT1977a

### **Specification**

---

#### **F2 Antibody (monoclonal) (M01) - Product Information**

Application	IP, WB, E
Primary Accession	<a href="#">P00734</a>
Other Accession	<a href="#">BC051332</a>
Reactivity	Human
Host	mouse
Clonality	Monoclonal
Isotype	IgG
Calculated MW	70037

#### **F2 Antibody (monoclonal) (M01) - Additional Information**

**Gene ID** 2147

##### **Other Names**

Prothrombin, Coagulation factor II, Activation peptide fragment 1, Activation peptide fragment 2, Thrombin light chain, Thrombin heavy chain, F2

##### **Target/Specificity**

F2 (AAH51332, 263 a.a. ~ 362 a.a) partial recombinant protein with GST tag. MW of the GST tag alone is 26 KDa.

##### **Dilution**

WB~~1:500~1000

##### **Format**

Clear, colorless solution in phosphate buffered saline, pH 7.2 .

##### **Storage**

Store at -20°C or lower. Aliquot to avoid repeated freezing and thawing.

##### **Precautions**

F2 Antibody (monoclonal) (M01) is for research use only and not for use in diagnostic or therapeutic procedures.

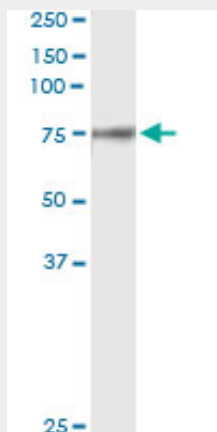
#### **F2 Antibody (monoclonal) (M01) - Protocols**

Provided below are standard protocols that you may find useful for product applications.

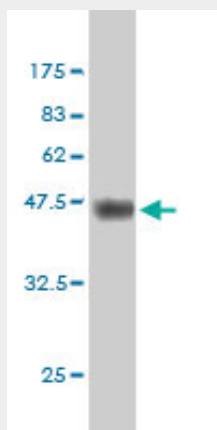
- [Western Blot](#)
- [Blocking Peptides](#)
- [Dot Blot](#)

- [Immunohistochemistry](#)
- [Immunofluorescence](#)
- [Immunoprecipitation](#)
- [Flow Cytometry](#)
- [Cell Culture](#)

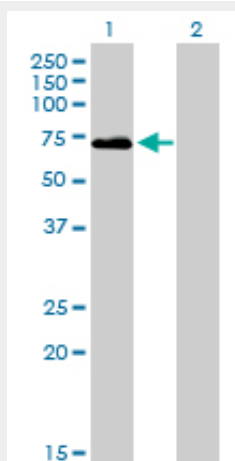
## F2 Antibody (monoclonal) (M01) - Images



Immunoprecipitation of F2 transfected lysate using anti-F2 monoclonal antibody and Protein A Magnetic Bead ([U0007](#)), and immunoblotted with F2 MaxPab rabbit polyclonal antibody.

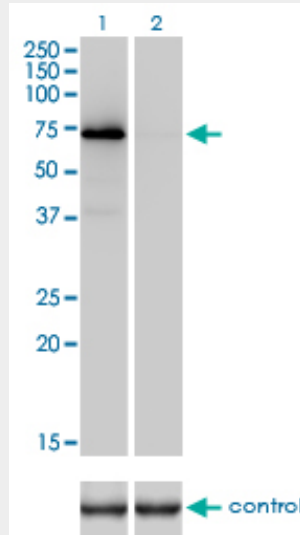


Antibody Reactive Against Recombinant Protein. Western Blot detection against Immunogen (36.74 kDa) .

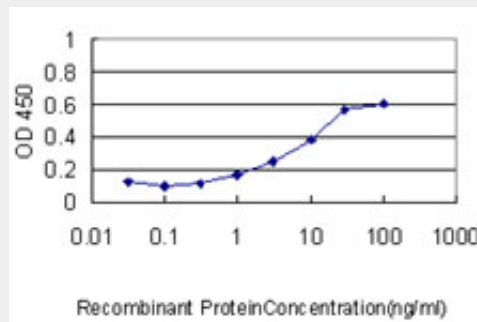


Western Blot analysis of F2 expression in transfected 293T cell line by F2 monoclonal antibody (M01), clone 1B7.

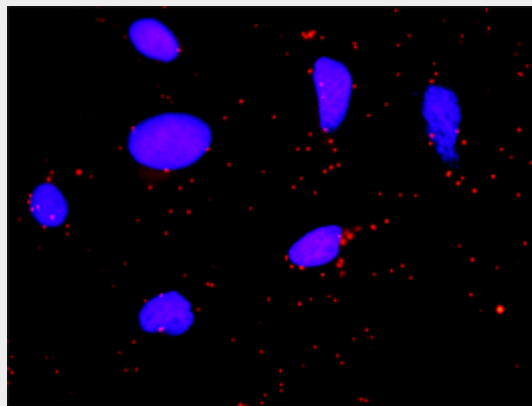
Lane 1: F2 transfected lysate(70 KDa).  
 Lane 2: Non-transfected lysate.



Western blot analysis of F2 over-expressed 293 cell line, cotransfected with F2 Validated Chimera RNAi (Cat # AT1977a)



Detection limit for recombinant GST tagged F2 is approximately 1ng/ml as a capture antibody.



Proximity Ligation Analysis of protein-protein interactions between FGA and F2. HeLa cells were stained with anti-FGA rabbit purified polyclonal 1:1200 and anti-F2 mouse monoclonal antibody 1:50. Each red dot represents the detection of protein-protein interaction complex, and nuclei were counterstained with DAPI (blue).

## **F2 Antibody (monoclonal) (M01) - Background**

Coagulation factor II is proteolytically cleaved to form thrombin in the first step of the coagulation cascade which ultimately results in the stemming of blood loss. F2 also plays a role in maintaining vascular integrity during development and postnatal life. Mutations in F2 leads to various forms of thrombosis and dysprothrombinemia.

## **F2 Antibody (monoclonal) (M01) - References**

The association of protein S Tokushima-K196E with a risk of deep vein thrombosis. Ikejiri M, et al. Int J Hematol, 2010 Sep. PMID 20811787. Role of Genetic and Acquired Prothrombotic Risk Factors in Genesis of Sudden Sensorineural Hearing Loss. Fusconi M, et al. Audiol Neurootol, 2010 Aug 25. PMID 20798492. Risk of venous thrombosis in pregnancy among carriers of the factor V Leiden and the prothrombin gene G20210A polymorphisms. Jacobsen AF, et al. J Thromb Haemost, 2010 Aug 23. PMID 20735725. Prothrombotic state, cardiovascular and metabolic syndrome risk factors in prepubertal children born large-for-gestational age (LGA). Evagelidou EN, et al. Diabetes Care, 2010 Aug 19. PMID 20724652. Thrombophilic risk factors for placental stillbirth. Simchen MJ, et al. Eur J Obstet Gynecol Reprod Biol, 2010 Aug 11. PMID 20708329.