

FBLIM1 Antibody (monoclonal) (M03)

Mouse monoclonal antibody raised against a partial recombinant FBLIM1.

Catalog # AT2007a

Specification

FBLIM1 Antibody (monoclonal) (M03) - Product Information

Application	WB
Primary Accession	Q8WUP2
Other Accession	NM_017556
Reactivity	Human
Host	mouse
Clonality	Monoclonal
Isotype	IgG2b Kappa
Calculated MW	40670

FBLIM1 Antibody (monoclonal) (M03) - Additional Information

Gene ID 54751

Other Names

Filamin-binding LIM protein 1, FBLP-1, Migfilin, Mitogen-inducible 2-interacting protein, MIG2-interacting protein, FBLIM1, FBLP1

Target/Specificity

FBLIM1 (NP_060026, 270 a.a. ~ 373 a.a) partial recombinant protein with GST tag. MW of the GST tag alone is 26 KDa.

Dilution

WB~~1:500~1000

Format

Clear, colorless solution in phosphate buffered saline, pH 7.2 .

Storage

Store at -20°C or lower. Aliquot to avoid repeated freezing and thawing.

Precautions

FBLIM1 Antibody (monoclonal) (M03) is for research use only and not for use in diagnostic or therapeutic procedures.

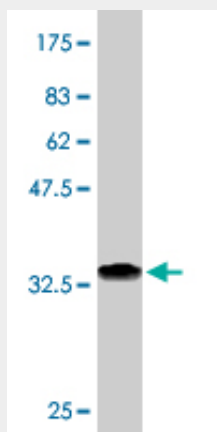
FBLIM1 Antibody (monoclonal) (M03) - Protocols

Provided below are standard protocols that you may find useful for product applications.

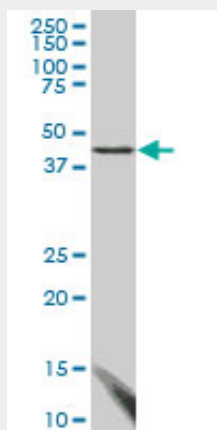
- [Western Blot](#)
- [Blocking Peptides](#)
- [Dot Blot](#)

- [Immunohistochemistry](#)
- [Immunofluorescence](#)
- [Immunoprecipitation](#)
- [Flow Cytometry](#)
- [Cell Culture](#)

FBLIM1 Antibody (monoclonal) (M03) - Images



Antibody Reactive Against Recombinant Protein. Western Blot detection against Immunogen (37.18 kDa) .



FBLIM1 monoclonal antibody (M03), clone 3F8. Western Blot analysis of FBLIM1 expression in HepG2 (Cat # AT2007a)

FBLIM1 Antibody (monoclonal) (M03) - Background

This gene encodes a protein with an N-terminal filamin-binding domain, a central proline-rich domain, and, multiple C-terminal LIM domains. This protein localizes at cell junctions and may link cell adhesion structures to the actin cytoskeleton. This protein may be involved in the assembly and stabilization of actin-filaments and likely plays a role in modulating cell adhesion, cell morphology and cell motility. This protein also localizes to the nucleus and may affect cardiomyocyte differentiation after binding with the CSX/NKX2-5 transcription factor. Alternative splicing results in multiple transcript variants encoding different isoforms.

FBLIM1 Antibody (monoclonal) (M03) - References

Migfilin interacts with Src and contributes to cell-matrix adhesion-mediated survival signaling. Zhao J, et al. J Biol Chem, 2009 Dec 4. PMID 19833732. Migfilin, a molecular switch in regulation of

integrin activation. Ithychanda SS, et al. J Biol Chem, 2009 Feb 13. PMID 19074766. Structural basis of the migfilin-filamin interaction and competition with integrin beta tails. Lad Y, et al. J Biol Chem, 2008 Dec 12. PMID 18829455. Colocalization of kindlin-1, kindlin-2, and migfilin at keratinocyte focal adhesion and relevance to the pathophysiology of Kindler syndrome. Lai-Cheong JE, et al. J Invest Dermatol, 2008 Sep. PMID 18528435. Increased cytoplasmic level of migfilin is associated with higher grades of human leiomyosarcoma. Papachristou DJ, et al. Histopathology, 2007 Oct. PMID 17711449.