

FBLN1 Antibody (monoclonal) (M01)**Mouse monoclonal antibody raised against a partial recombinant FBLN1.****Catalog # AT2009a****Specification**

FBLN1 Antibody (monoclonal) (M01) - Product Information

| | |
|-------------------|--------------------------|
| Application | WB, IP |
| Primary Accession | P23142 |
| Other Accession | BC022497 |
| Reactivity | Human |
| Host | mouse |
| Clonality | Monoclonal |
| Isotype | IgG2a Kappa |
| Calculated MW | 77214 |

FBLN1 Antibody (monoclonal) (M01) - Additional Information**Gene ID** 2192**Other Names**

Fibulin-1, FIBL-1, FBLN1

Target/Specificity

FBLN1 (AAH22497, 151 a.a. ~ 250 a.a) partial recombinant protein with GST tag. MW of the GST tag alone is 26 KDa.

Dilution

WB~~1:500~1000

IP~~N/A

Format

Clear, colorless solution in phosphate buffered saline, pH 7.2 .

Storage

Store at -20°C or lower. Aliquot to avoid repeated freezing and thawing.

Precautions

FBLN1 Antibody (monoclonal) (M01) is for research use only and not for use in diagnostic or therapeutic procedures.

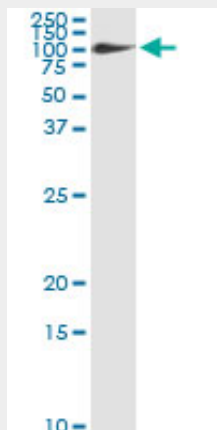
FBLN1 Antibody (monoclonal) (M01) - Protocols

Provided below are standard protocols that you may find useful for product applications.

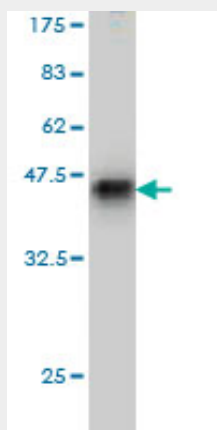
- [Western Blot](#)
- [Blocking Peptides](#)
- [Dot Blot](#)

- [Immunohistochemistry](#)
- [Immunofluorescence](#)
- [Immunoprecipitation](#)
- [Flow Cytometry](#)
- [Cell Culture](#)

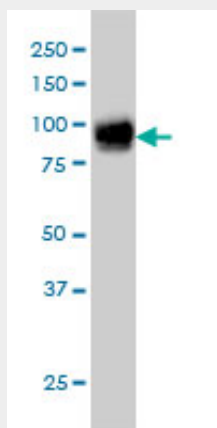
FBLN1 Antibody (monoclonal) (M01) - Images



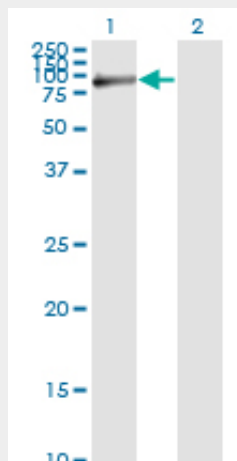
Immunoprecipitation of FBLN1 transfected lysate using anti-FBLN1 monoclonal antibody and Protein A Magnetic Bead ([U0007](#)), and immunoblotted with FBLN1 MaxPab rabbit polyclonal antibody.



Antibody Reactive Against Recombinant Protein. Western Blot detection against Immunogen (36.74 KDa) .



FBLN1 monoclonal antibody (M01), clone 4C9 Western Blot analysis of FBLN1 expression in A-431 (Cat # AT2009a)



Western Blot analysis of FBLN1 expression in transfected 293T cell line by FBLN1 monoclonal antibody (M01), clone 4C9.

Lane 1: FBLN1 transfected lysate(74.4 KDa).

Lane 2: Non-transfected lysate.

FBLN1 Antibody (monoclonal) (M01) - Background

Fibulin 1 is a secreted glycoprotein that becomes incorporated into a fibrillar extracellular matrix. Calcium-binding is apparently required to mediate its binding to laminin and nidogen. It mediates platelet adhesion via binding fibrinogen. Four splice variants which differ in the 3' end have been identified. Each variant encodes a different isoform, but no functional distinctions have been identified among the four variants.

FBLN1 Antibody (monoclonal) (M01) - References

All-trans retinoic acid regulates the expression of the extracellular matrix protein fibulin-1 in the guinea pig sclera and human scleral fibroblasts. Li C, et al. Mol Vis, 2010 Apr 15. PMID 20405022. Personalized smoking cessation: interactions between nicotine dose, dependence and quit-success genotype score. Rose JE, et al. Mol Med, 2010 Jul-Aug. PMID 20379614. Application of gene network analysis techniques identifies AXIN1/PDIA2 and endoglin haplotypes associated with bicuspid aortic valve. Wooten EC, et al. PLoS One, 2010 Jan 21. PMID 20098615. Fibulin-1 and fibrinogen in human atherosclerotic lesions. Argraves WS, et al. Histochem Cell Biol, 2009 Nov. PMID 19693531. Expression of ECM proteins fibulin-1 and -2 in acute and chronic liver disease and in cultured rat liver cells. Piscaglia F, et al. Cell Tissue Res, 2009 Sep. PMID 19609566.