

FBXL3 Antibody (monoclonal) (M03)**Mouse monoclonal antibody raised against a partial recombinant FBXL3.****Catalog # AT2014a****Specification**

FBXL3 Antibody (monoclonal) (M03) - Product Information

Application	WB, E
Primary Accession	Q9UKT7
Other Accession	NM_012158
Reactivity	Human, Mouse, Rat
Host	mouse
Clonality	Monoclonal
Isotype	IgG2a Kappa
Calculated MW	48707

FBXL3 Antibody (monoclonal) (M03) - Additional Information**Gene ID** 26224**Other Names**

F-box/LRR-repeat protein 3, F-box and leucine-rich repeat protein 3A, F-box/LRR-repeat protein 3A, FBXL3, FBL3A, FBXL3A

Target/Specificity

FBXL3 (NP_036290, 1 a.a. ~ 100 a.a) partial recombinant protein with GST tag. MW of the GST tag alone is 26 KDa.

Dilution

WB~~1:500~1000

E~~N/A

Format

Clear, colorless solution in phosphate buffered saline, pH 7.2 .

Storage

Store at -20°C or lower. Aliquot to avoid repeated freezing and thawing.

Precautions

FBXL3 Antibody (monoclonal) (M03) is for research use only and not for use in diagnostic or therapeutic procedures.

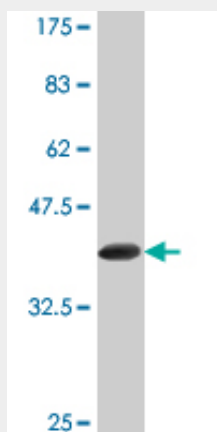
FBXL3 Antibody (monoclonal) (M03) - Protocols

Provided below are standard protocols that you may find useful for product applications.

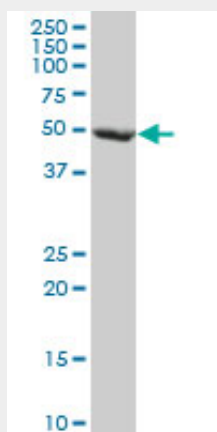
- [Western Blot](#)
- [Blocking Peptides](#)

- [Dot Blot](#)
- [Immunohistochemistry](#)
- [Immunofluorescence](#)
- [Immunoprecipitation](#)
- [Flow Cytometry](#)
- [Cell Culture](#)

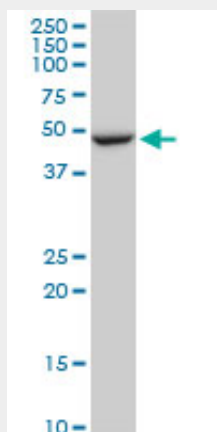
FBXL3 Antibody (monoclonal) (M03) - Images



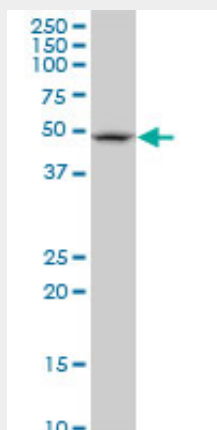
Antibody Reactive Against Recombinant Protein. Western Blot detection against Immunogen (36.74 kDa) .



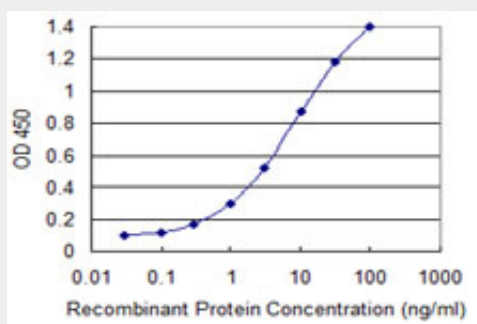
FBXL3 monoclonal antibody (M03), clone 1A3. Western Blot analysis of FBXL3 expression in HeLa (Cat # AT2014a)



FBXL3 monoclonal antibody (M03), clone 1A3. Western Blot analysis of FBXL3 expression in PC-12((Cat # AT2014a)



FBXL3 monoclonal antibody (M03), clone 1A3. Western Blot analysis of FBXL3 expression in Raw 264.7((Cat # AT2014a)



Detection limit for recombinant GST tagged FBXL3 is 0.1 ng/ml as a capture antibody.

FBXL3 Antibody (monoclonal) (M03) - Background

This gene encodes a member of the F-box protein family which is characterized by an approximately 40 amino acid motif, the F-box. The F-box proteins constitute one of the four subunits of ubiquitin protein ligase complex called SCFs (SKP1-cullin-F-box), which function in phosphorylation-dependent ubiquitination. The F-box proteins are divided into 3 classes: Fbws containing WD-40 domains, Fbls containing leucine-rich repeats, and Fbxs containing either different protein-protein interaction modules or no recognizable motifs. The protein encoded by this gene belongs to the Fbls class and, in addition to an F-box, contains several tandem leucine-rich repeats and is localized in the nucleus.

FBXL3 Antibody (monoclonal) (M03) - References

SCFFbxl3 controls the oscillation of the circadian clock by directing the degradation of cryptochrome proteins. Busino L, et al. Science, 2007 May 11. PMID 17463251. Diversification of transcriptional modulation: large-scale identification and characterization of putative alternative promoters of human genes. Kimura K, et al. Genome Res, 2006 Jan. PMID 16344560. The status, quality, and expansion of the NIH full-length cDNA project: the Mammalian Gene Collection (MGC). Gerhard DS, et al. Genome Res, 2004 Oct. PMID 15489334. Generation and initial analysis of more than 15,000 full-length human and mouse cDNA sequences. Strausberg RL, et al. Proc Natl Acad Sci U S A, 2002 Dec 24. PMID 12477932. cDNA cloning and expression analysis of new members of the mammalian F-box protein family. Ilyin GP, et al. Genomics, 2000 Jul 1. PMID 10945468.