

FBXL8 Antibody (monoclonal) (M01)

Mouse monoclonal antibody raised against a full length recombinant FBXL8.

Catalog # AT2015a

Specification

FBXL8 Antibody (monoclonal) (M01) - Product Information

Application	E
Primary Accession	O96CD0
Other Accession	BC014414
Reactivity	Human
Host	mouse
Clonality	Monoclonal
Isotype	IgG1 Kappa
Calculated MW	40516

FBXL8 Antibody (monoclonal) (M01) - Additional Information

Gene ID 55336

Other Names

F-box/LRR-repeat protein 8, F-box and leucine-rich repeat protein 8, F-box protein FBL8, FBXL8, FBL8

Target/Specificity

FBXL8 (AAH14414, 1 a.a. ~ 374 a.a) full-length recombinant protein with GST tag. MW of the GST tag alone is 26 KDa.

Dilution

E~~N/A

Format

Clear, colorless solution in phosphate buffered saline, pH 7.2 .

Storage

Store at -20°C or lower. Aliquot to avoid repeated freezing and thawing.

Precautions

FBXL8 Antibody (monoclonal) (M01) is for research use only and not for use in diagnostic or therapeutic procedures.

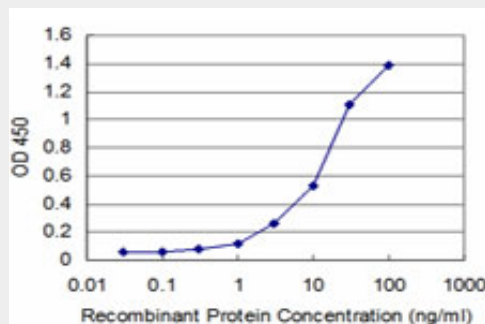
FBXL8 Antibody (monoclonal) (M01) - Protocols

Provided below are standard protocols that you may find useful for product applications.

- [Western Blot](#)
- [Blocking Peptides](#)
- [Dot Blot](#)

- [Immunohistochemistry](#)
- [Immunofluorescence](#)
- [Immunoprecipitation](#)
- [Flow Cytometry](#)
- [Cell Culture](#)

FBXL8 Antibody (monoclonal) (M01) - Images



Detection limit for recombinant GST tagged FBXL8 is approximately 0.3ng/ml as a capture antibody.

FBXL8 Antibody (monoclonal) (M01) - Background

This gene encodes a member of the F-box protein family which is characterized by an approximately 40 amino acid motif, the F-box. The F-box proteins constitute one of the four subunits of the ubiquitin protein ligase complex called SCFs (SKP1-cullin-F-box), which function in phosphorylation-dependent ubiquitination. The F-box proteins are divided into 3 classes: Fbws containing WD-40 domains, Fbls containing leucine-rich repeats, and Fbxs containing either different protein-protein interaction modules or no recognizable motifs. The protein encoded by this gene belongs to the Fbls class. It shares 78% sequence identity with the mouse protein.

FBXL8 Antibody (monoclonal) (M01) - References

Variation at the NFATC2 Locus Increases the Risk of Thiazolinedione-Induced Edema in the Diabetes REduction Assessment with ramipril and rosiglitazone Medication (DREAM) Study. Bailey SD, et al. Diabetes Care, 2010 Jul 13. PMID 20628086. Gene-centric association signals for lipids and apolipoproteins identified via the HumanCVD BeadChip. Talmud PJ, et al. Am J Hum Genet, 2009 Nov. PMID 19913121. Array MAPPIT: high-throughput interactome analysis in mammalian cells. Lievens S, et al. J Proteome Res, 2009 Feb. PMID 19159283. The status, quality, and expansion of the NIH full-length cDNA project: the Mammalian Gene Collection (MGC). Gerhard DS, et al. Genome Res, 2004 Oct. PMID 15489334. Complete sequencing and characterization of 21,243 full-length human cDNAs. Ota T, et al. Nat Genet, 2004 Jan. PMID 14702039.