

**FBXO25 Antibody (monoclonal) (M01)**

Mouse monoclonal antibody raised against a full length recombinant FBXO25.

Catalog # AT2018a

**Specification**

---

**FBXO25 Antibody (monoclonal) (M01) - Product Information**

Application	WB, E
Primary Accession	<a href="#">Q8TCJ0</a>
Other Accession	<a href="#">BC050393</a>
Reactivity	Human
Host	mouse
Clonality	Monoclonal
Isotype	IgG2a kappa
Calculated MW	43313

**FBXO25 Antibody (monoclonal) (M01) - Additional Information**

**Gene ID** 26260

**Other Names**

F-box only protein 25, FBXO25, FBX25

**Target/Specificity**

FBXO25 (AAH50393, 1 a.a. ~ 367 a.a) full-length recombinant protein with GST tag. MW of the GST tag alone is 26 KDa.

**Dilution**

WB~~1:500~1000

**Format**

Clear, colorless solution in phosphate buffered saline, pH 7.2 .

**Storage**

Store at -20°C or lower. Aliquot to avoid repeated freezing and thawing.

**Precautions**

FBXO25 Antibody (monoclonal) (M01) is for research use only and not for use in diagnostic or therapeutic procedures.

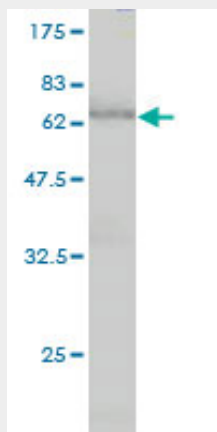
**FBXO25 Antibody (monoclonal) (M01) - Protocols**

Provided below are standard protocols that you may find useful for product applications.

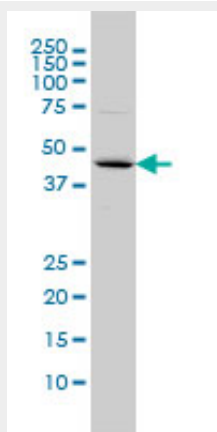
- [Western Blot](#)
- [Blocking Peptides](#)
- [Dot Blot](#)
- [Immunohistochemistry](#)

- [Immunofluorescence](#)
- [Immunoprecipitation](#)
- [Flow Cytometry](#)
- [Cell Culture](#)

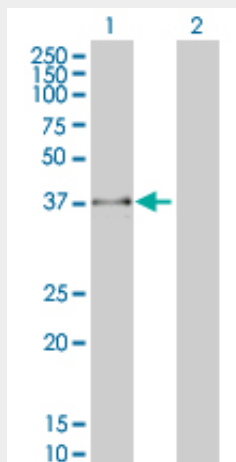
### FBXO25 Antibody (monoclonal) (M01) - Images



Antibody Reactive Against Recombinant Protein. Western Blot detection against Immunogen (66.11 KDa) .



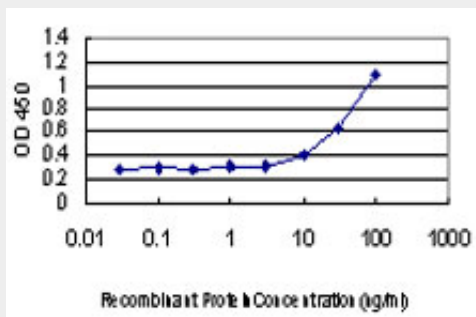
FBXO25 monoclonal antibody (M01), clone 2F1 Western Blot analysis of FBXO25 expression in COLO 320 HSR ( (Cat # AT2018a )



Western Blot analysis of FBXO25 expression in transfected 293T cell line by FBXO25 monoclonal antibody (M01), clone 2F1.

Lane 1: FBXO25 transfected lysate(43 KDa).

Lane 2: Non-transfected lysate.



Detection limit for recombinant GST tagged FBXO25 is approximately 3ng/ml as a capture antibody.

### **FBXO25 Antibody (monoclonal) (M01) - Background**

This gene encodes a member of the F-box protein family which is characterized by an approximately 40 amino acid motif, the F-box. The F-box proteins constitute one of the four subunits of ubiquitin protein ligase complex called SCFs (SKP1-cullin-F-box), which function in phosphorylation-dependent ubiquitination. The F-box proteins are divided into 3 classes: Fbws containing WD-40 domains, Fbls containing leucine-rich repeats, and Fbxs containing either different protein-protein interaction modules or no recognizable motifs. The protein encoded by this gene belongs to the Fbxs class. Three alternatively spliced transcript variants encoding distinct isoforms have been found for this gene.

### **FBXO25 Antibody (monoclonal) (M01) - References**

FBXO25-associated nuclear domains: a novel subnuclear structure. Manfiolli AO, et al. Mol Biol Cell, 2008 May. PMID 18287534.Characterization of FBX25, encoding a novel brain-expressed F-box protein. Hagens O, et al. Biochim Biophys Acta, 2006 Jan. PMID 16278047.The status, quality, and expansion of the NIH full-length cDNA project: the Mammalian Gene Collection (MGC). Gerhard DS, et al. Genome Res, 2004 Oct. PMID 15489334.Generation and initial analysis of more than 15,000 full-length human and mouse cDNA sequences. Strausberg RL, et al. Proc Natl Acad Sci U S A, 2002 Dec 24. PMID 12477932.A family of mammalian F-box proteins. Winston JT, et al. Curr Biol, 1999 Oct 21. PMID 10531037.