

**FBXO6 Antibody (monoclonal) (M01)****Mouse monoclonal antibody raised against a full length recombinant FBXO6.****Catalog # AT2021a****Specification**

---

**FBXO6 Antibody (monoclonal) (M01) - Product Information**

Application	WB, IP
Primary Accession	<a href="#">O9NRD1</a>
Other Accession	<a href="#">BC020880</a>
Reactivity	Human
Host	mouse
Clonality	Monoclonal
Isotype	IgG1 kappa
Calculated MW	33933

**FBXO6 Antibody (monoclonal) (M01) - Additional Information****Gene ID** 26270**Other Names**

F-box only protein 6, F-box protein that recognizes sugar chains 2, F-box/G-domain protein 2, FBXO6, FBG2, FBS2, FBX6

**Target/Specificity**

FBXO6 (AAH20880.1, 1 a.a. ~ 293 a.a) full-length recombinant protein with GST tag. MW of the GST tag alone is 26 KDa.

**Dilution**

WB~~1:500~1000

IP~~N/A

**Format**

Clear, colorless solution in phosphate buffered saline, pH 7.2 .

**Storage**

Store at -20°C or lower. Aliquot to avoid repeated freezing and thawing.

**Precautions**

FBXO6 Antibody (monoclonal) (M01) is for research use only and not for use in diagnostic or therapeutic procedures.

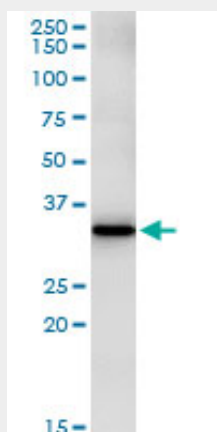
**FBXO6 Antibody (monoclonal) (M01) - Protocols**

Provided below are standard protocols that you may find useful for product applications.

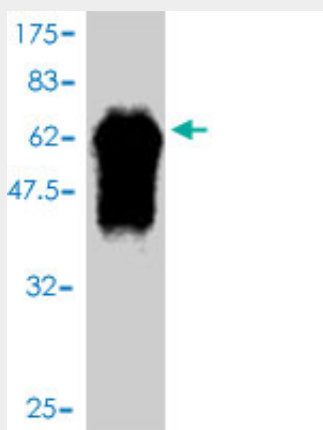
- [Western Blot](#)
- [Blocking Peptides](#)

- [Dot Blot](#)
- [Immunohistochemistry](#)
- [Immunofluorescence](#)
- [Immunoprecipitation](#)
- [Flow Cytometry](#)
- [Cell Culture](#)

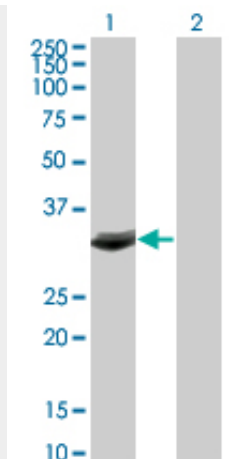
#### FBXO6 Antibody (monoclonal) (M01) - Images



Immunoprecipitation of FBXO6 transfected lysate using anti-FBXO6 monoclonal antibody and Protein A Magnetic Bead ([U0007](#)), and immunoblotted with FBXO6 monoclonal antibody.



Antibody Reactive Against Recombinant Protein. Western Blot detection against Immunogen (57.97 KDa) .



Western Blot analysis of FBXO6 expression in transfected 293T cell line by FBXO6 monoclonal antibody (M01), clone 3F10.

Lane 1: FBXO6 transfected lysate(33.933 KDa).

Lane 2: Non-transfected lysate.

#### **FBXO6 Antibody (monoclonal) (M01) - Background**

This gene encodes a member of the F-box protein family which is characterized by an approximately 40 amino acid motif, the F-box. The F-box proteins constitute one of the four subunits of the ubiquitin protein ligase complex called SCFs (SKP1-cullin-F-box), which function in phosphorylation-dependent ubiquitination. The F-box proteins are divided into 3 classes: Fbws containing WD-40 domains, Fbls containing leucine-rich repeats, and Fbxs containing either different protein-protein interaction modules or no recognizable motifs. The protein encoded by this gene belongs to the Fbxs class, and its C-terminal region is highly similar to that of rat NFB42 (neural F Box 42 kDa) which may be involved in the control of the cell cycle.

#### **FBXO6 Antibody (monoclonal) (M01) - References**

The F box protein Fbx6 regulates Chk1 stability and cellular sensitivity to replication stress. Zhang YW, et al. Mol Cell, 2009 Aug 28. PMID 19716789. The DNA sequence and biological annotation of human chromosome 1. Gregory SG, et al. Nature, 2006 May 18. PMID 16710414. The status, quality, and expansion of the NIH full-length cDNA project: the Mammalian Gene Collection (MGC). Gerhard DS, et al. Genome Res, 2004 Oct. PMID 15489334. Fbs2 is a new member of the E3 ubiquitin ligase family that recognizes sugar chains. Yoshida Y, et al. J Biol Chem, 2003 Oct 31. PMID 12939278. Generation and initial analysis of more than 15,000 full-length human and mouse cDNA sequences. Strausberg RL, et al. Proc Natl Acad Sci U S A, 2002 Dec 24. PMID 12477932.