

## **FCER2 Antibody (monoclonal) (M14)**

Mouse monoclonal antibody raised against a full-length recombinant FCER2.

Catalog # AT2025a

### **Specification**

---

#### **FCER2 Antibody (monoclonal) (M14) - Product Information**

Application	WB, E
Primary Accession	<a href="#">P06734</a>
Other Accession	<a href="#">BC014108</a>
Reactivity	Human
Host	mouse
Clonality	Monoclonal
Isotype	IgG2a Kappa
Calculated MW	36469

#### **FCER2 Antibody (monoclonal) (M14) - Additional Information**

**Gene ID** 2208

##### **Other Names**

Low affinity immunoglobulin epsilon Fc receptor, BLAST-2, C-type lectin domain family 4 member J, Fc-epsilon-R1I, Immunoglobulin E-binding factor, Lymphocyte IgE receptor, CD23, Low affinity immunoglobulin epsilon Fc receptor membrane-bound form, Low affinity immunoglobulin epsilon Fc receptor soluble form, FCER2, CD23A, CLEC4J, FCE2, IGEBF

##### **Target/Specificity**

FCER2 (AAH14108, 1 a.a. ~ 321 a.a) full-length recombinant protein with GST tag. MW of the GST tag alone is 26 KDa.

##### **Dilution**

WB ~ ~ 1:500 ~ 1000

E ~ ~ N/A

##### **Format**

Clear, colorless solution in phosphate buffered saline, pH 7.2 .

##### **Storage**

Store at -20°C or lower. Aliquot to avoid repeated freezing and thawing.

##### **Precautions**

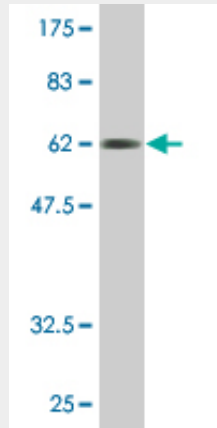
FCER2 Antibody (monoclonal) (M14) is for research use only and not for use in diagnostic or therapeutic procedures.

#### **FCER2 Antibody (monoclonal) (M14) - Protocols**

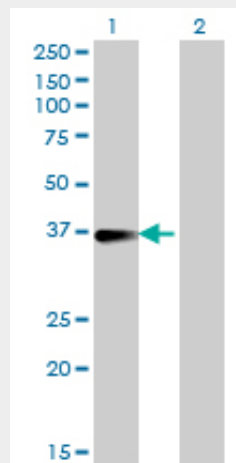
Provided below are standard protocols that you may find useful for product applications.

- [Western Blot](#)
- [Blocking Peptides](#)
- [Dot Blot](#)
- [Immunohistochemistry](#)
- [Immunofluorescence](#)
- [Immunoprecipitation](#)
- [Flow Cytometry](#)
- [Cell Culture](#)

### FCER2 Antibody (monoclonal) (M14) - Images



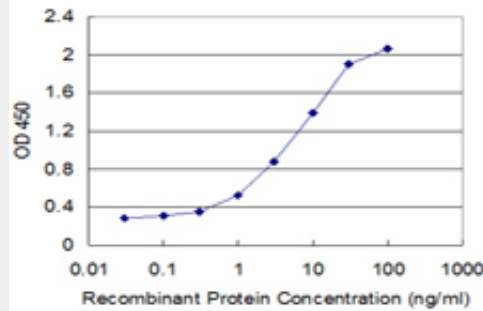
Antibody Reactive Against Recombinant Protein. Western Blot detection against Immunogen (61.05 KDa) .



Western Blot analysis of FCER2 expression in transfected 293T cell line by FCER2 monoclonal antibody (M14), clone 2A7.

Lane 1: FCER2 transfected lysate(36.5 KDa).

Lane 2: Non-transfected lysate.



Detection limit for recombinant GST tagged FCER2 is approximately 0.1ng/ml as a capture antibody.

### **FCER2 Antibody (monoclonal) (M14) - Background**

The human leukocyte differentiation antigen CD23 (FCE2) is a key molecule for B-cell activation and growth. It is the low-affinity receptor for IgE. The truncated molecule can be secreted, then functioning as a potent mitogenic growth factor.

### **FCER2 Antibody (monoclonal) (M14) - References**

Interleukin-9 polymorphism in infants with respiratory syncytial virus infection: an opposite effect in boys and girls. Schuurhof A, et al. *Pediatr Pulmonol*, 2010 Jun. PMID 20503287. Polymorphisms in innate immunity genes and risk of childhood leukemia. Han S, et al. *Hum Immunol*, 2010 Jul. PMID 20438785. Risk of meningioma and common variation in genes related to innate immunity. Rajaraman P, et al. *Cancer Epidemiol Biomarkers Prev*, 2010 May. PMID 20406964. New genetic associations detected in a host response study to hepatitis B vaccine. Davila S, et al. *Genes Immun*, 2010 Apr. PMID 20237496. Interaction of functional FCER2 promoter polymorphism and phenotype-associated haplotypes. Potaczek DP, et al. *Tissue Antigens*, 2009 Dec. PMID 19845913.