

## FCGR2B Antibody (monoclonal) (M01)

Mouse monoclonal antibody raised against a partial recombinant FCGR2B.

Catalog # AT2027a

### Specification

---

#### FCGR2B Antibody (monoclonal) (M01) - Product Information

Application	WB, IHC, E
Primary Accession	<a href="#">P31994</a>
Other Accession	<a href="#">BC031992</a>
Reactivity	Human
Host	mouse
Clonality	Monoclonal
Isotype	IgG1 Kappa
Calculated MW	34044

#### FCGR2B Antibody (monoclonal) (M01) - Additional Information

Gene ID 2213

##### Other Names

Low affinity immunoglobulin gamma Fc region receptor II-b, IgG Fc receptor II-b, CDw32, Fc-gamma RII-b, Fc-gamma-RIIb, FcRII-b, CD32, FCGR2B, CD32, FCG2, IGFR2

##### Target/Specificity

FCGR2B (AAH31992, 45 a.a. ~ 154 a.a) partial recombinant protein with GST tag. MW of the GST tag alone is 26 KDa.

##### Dilution

WB~~1:500~1000

IHC~~1:100~500

E~~N/A

##### Format

Clear, colorless solution in phosphate buffered saline, pH 7.2 .

##### Storage

Store at -20°C or lower. Aliquot to avoid repeated freezing and thawing.

##### Precautions

FCGR2B Antibody (monoclonal) (M01) is for research use only and not for use in diagnostic or therapeutic procedures.

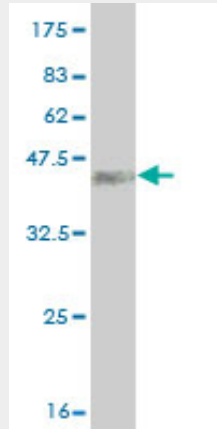
#### FCGR2B Antibody (monoclonal) (M01) - Protocols

Provided below are standard protocols that you may find useful for product applications.

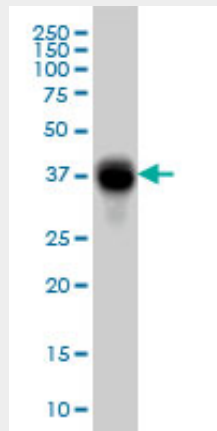
- [Western Blot](#)

- [Blocking Peptides](#)
- [Dot Blot](#)
- [Immunohistochemistry](#)
- [Immunofluorescence](#)
- [Immunoprecipitation](#)
- [Flow Cytometry](#)
- [Cell Culture](#)

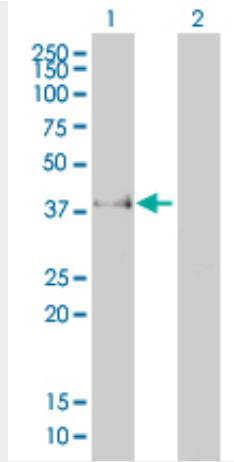
### FCGR2B Antibody (monoclonal) (M01) - Images



Antibody Reactive Against Recombinant Protein. Western Blot detection against Immunogen (37.84 kDa) .

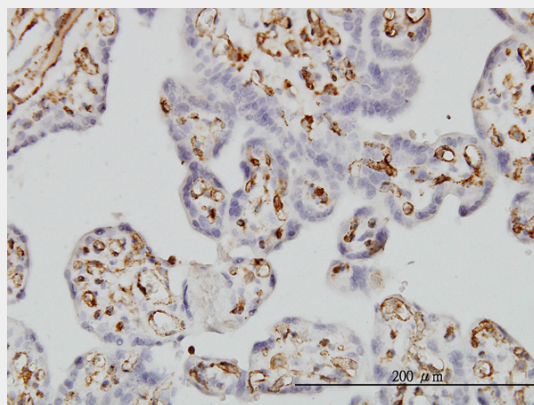


FCGR2B monoclonal antibody (M01), clone 2E10 Western Blot analysis of FCGR2B expression in K-562 ( (Cat # AT2027a )

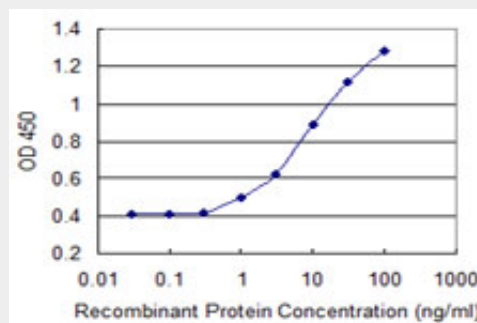


Western Blot analysis of FCGR2B expression in transfected 293T cell line by FCGR2B monoclonal antibody (M01), clone 2E10.

Lane 1: FCGR2B transfected lysate(34 KDa).  
Lane 2: Non-transfected lysate.



Immunoperoxidase of monoclonal antibody to FCGR2B on formalin-fixed paraffin-embedded human placenta. [antibody concentration 6 ug/ml]



Detection limit for recombinant GST tagged FCGR2B is 0.3 ng/ml as a capture antibody.

### FCGR2B Antibody (monoclonal) (M01) - Background

The protein encoded by this gene is a low affinity receptor for the Fc region of immunoglobulin gamma complexes. The encoded protein is involved in the phagocytosis of immune complexes and in the regulation of antibody production by B-cells. Variations in this gene may increase susceptibility to systemic lupus erythematosus (SLE). Several transcript variants encoding different isoforms have been found for this gene.

**FCGR2B Antibody (monoclonal) (M01) - References**

Dengue hemorrhagic fever is associated with polymorphisms in JAK1. Silva LK, et al. Eur J Hum Genet, 2010 Jun 30. PMID 20588308. The role of Fc gamma receptors polymorphisms in bullous pemphigoid. Guilabert A, et al. J Am Acad Dermatol, 2010 Jul. PMID 20542180. Copy number, linkage disequilibrium and disease association in the FCGR locus. Niederer HA, et al. Hum Mol Genet, 2010 Aug 15. PMID 20508037. An Fc gamma RIIb transmembrane polymorphism in Chinese ITP patients. Xu J, et al. Platelets, 2010. PMID 20507212. SNPs of Fc-gamma receptor genes and chronic periodontitis. Chai L, et al. J Dent Res, 2010 Jul. PMID 20439936.