

**FHL1 Antibody (monoclonal) (M01)****Mouse monoclonal antibody raised against a partial recombinant FHL1.****Catalog # AT2048a****Specification**

---

**FHL1 Antibody (monoclonal) (M01) - Product Information**

Application	WB, E
Primary Accession	<a href="#">Q13642</a>
Other Accession	<a href="#">NM_001449</a>
Reactivity	Human, Mouse, Rat
Host	mouse
Clonality	Monoclonal
Isotype	IgG2a Kappa
Calculated MW	36263

**FHL1 Antibody (monoclonal) (M01) - Additional Information****Gene ID** 2273**Other Names**

Four and a half LIM domains protein 1, FHL-1, Skeletal muscle LIM-protein 1, SLIM, SLIM-1, FHL1, SLIM1

**Target/Specificity**

FHL1 (NP\_001440, 23 a.a. ~ 120 a.a) partial recombinant protein with GST tag. MW of the GST tag alone is 26 KDa.

**Dilution**

WB~~1:500~1000

E~~N/A

**Format**

Clear, colorless solution in phosphate buffered saline, pH 7.2 .

**Storage**

Store at -20°C or lower. Aliquot to avoid repeated freezing and thawing.

**Precautions**

FHL1 Antibody (monoclonal) (M01) is for research use only and not for use in diagnostic or therapeutic procedures.

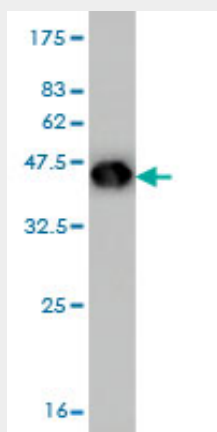
**FHL1 Antibody (monoclonal) (M01) - Protocols**

Provided below are standard protocols that you may find useful for product applications.

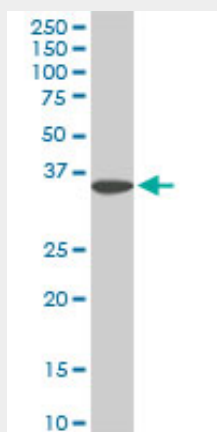
- [Western Blot](#)
- [Blocking Peptides](#)

- [Dot Blot](#)
- [Immunohistochemistry](#)
- [Immunofluorescence](#)
- [Immunoprecipitation](#)
- [Flow Cytometry](#)
- [Cell Culture](#)

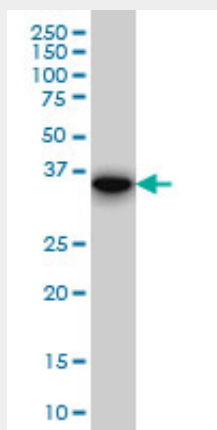
### FHL1 Antibody (monoclonal) (M01) - Images



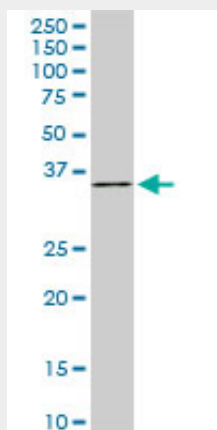
Antibody Reactive Against Recombinant Protein. Western Blot detection against Immunogen (36.52 kDa) .



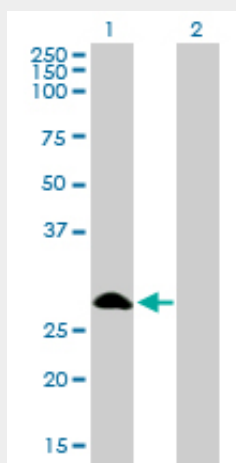
FHL1 monoclonal antibody (M01), clone 2A9. Western Blot analysis of FHL1 expression in PC-12 (Cat # AT2048a )



FHL1 monoclonal antibody (M01), clone 2A9. Western Blot analysis of FHL1 expression in Raw 264.7.



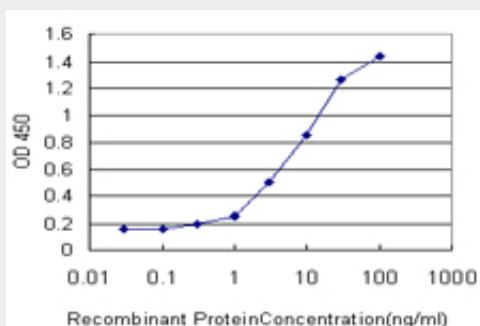
FHL1 monoclonal antibody (M01), clone 2A9. Western Blot analysis of FHL1 expression in NIH/3T3((Cat # AT2048a )



Western Blot analysis of FHL1 expression in transfected 293T cell line by FHL1 monoclonal antibody (M01), clone 2A9.

Lane 1: FHL1 transfected lysate(31.9 KDa).

Lane 2: Non-transfected lysate.



Detection limit for recombinant GST tagged FHL1 is approximately 0.3ng/ml as a capture antibody.

### FHL1 Antibody (monoclonal) (M01) - Background

This gene encodes a member of the four-and-a-half-LIM-only protein family. Family members contain two highly conserved, tandemly arranged, zinc finger domains with four highly conserved cysteines binding a zinc atom in each zinc finger. Expression of these family members occurs in a cell- and tissue-specific mode and these proteins are involved in many cellular processes. Mutations in this gene have been found in patients with Emery-Dreifuss muscular dystrophy. Multiple alternately spliced transcript variants which encode different protein isoforms have been described.

#### **FHL1 Antibody (monoclonal) (M01) - References**

1. Carbonic Anhydrase III and Four-and-a-Half LIM Protein 1 are preferentially oxidized with muscle unloading. Chen CN, Ferrington DA, Thompson LV. J Appl Physiol. 2008 Nov;105(5):1554-61. Epub 2008 Aug 28.