

FHL5 Antibody (monoclonal) (M01)**Mouse monoclonal antibody raised against a full length recombinant FHL5.****Catalog # AT2051a****Specification**

FHL5 Antibody (monoclonal) (M01) - Product Information

Application	WB, IF
Primary Accession	Q5TD97
Other Accession	BC021723
Reactivity	Human
Host	mouse
Clonality	Monoclonal
Isotype	IgG2a kappa
Calculated MW	32720

FHL5 Antibody (monoclonal) (M01) - Additional Information**Gene ID** 9457**Other Names**

Four and a half LIM domains protein 5, FHL-5, Activator of cAMP-responsive element modulator in testis, Activator of CREM in testis, FHL5, ACT

Target/Specificity

FHL5 (AAH21723, 1 a.a. ~ 284 a.a) full-length recombinant protein with GST tag. MW of the GST tag alone is 26 KDa.

Dilution

WB~~1:500~1000

IF~~1:50~200

Format

Clear, colorless solution in phosphate buffered saline, pH 7.2 .

Storage

Store at -20°C or lower. Aliquot to avoid repeated freezing and thawing.

Precautions

FHL5 Antibody (monoclonal) (M01) is for research use only and not for use in diagnostic or therapeutic procedures.

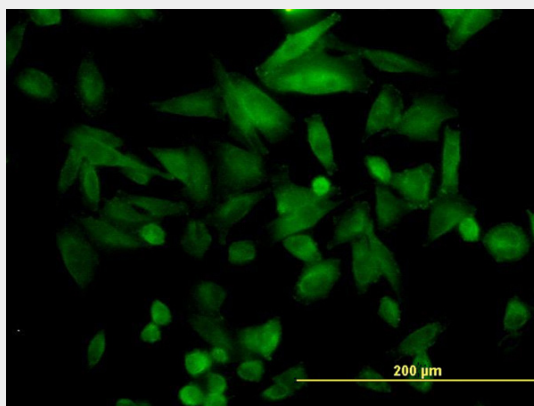
FHL5 Antibody (monoclonal) (M01) - Protocols

Provided below are standard protocols that you may find useful for product applications.

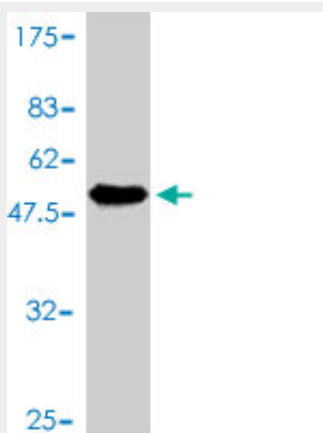
- [Western Blot](#)
- [Blocking Peptides](#)

- [Dot Blot](#)
- [Immunohistochemistry](#)
- [Immunofluorescence](#)
- [Immunoprecipitation](#)
- [Flow Cytometry](#)
- [Cell Culture](#)

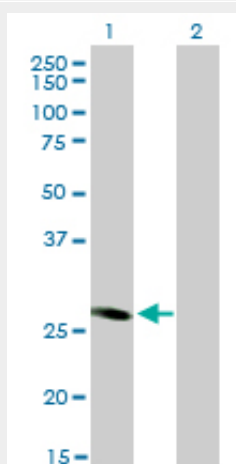
FHL5 Antibody (monoclonal) (M01) - Images



Immunofluorescence of monoclonal antibody to FHL5 on HepG2 cell. [antibody concentration 10 ug/ml]



Antibody Reactive Against Recombinant Protein. Western Blot detection against Immunogen (56.98 KDa) .



Western Blot analysis of FHL5 expression in transfected 293T cell line by FHL5 monoclonal antibody (M01), clone 1G12-D2.

Lane 1: FHL5 transfected lysate(32.8 KDa).

Lane 2: Non-transfected lysate.

FHL5 Antibody (monoclonal) (M01) - Background

The protein encoded by this gene is coordinately expressed with activator of cAMP-responsive element modulator (CREM). It is associated with CREM and confers a powerful transcriptional activation function. CREM acts as a transcription factor essential for the differentiation of spermatids into mature spermatozoa. There are multiple polyadenylation sites found in this gene. Alternative splicing results in multiple transcript variants encoding the same protein.

FHL5 Antibody (monoclonal) (M01) - References

Variation at the NFATC2 Locus Increases the Risk of Thiazolinedione-Induced Edema in the Diabetes REduction Assessment with ramipril and rosiglitazone Medication (DREAM) Study. Bailey SD, et al. Diabetes Care, 2010 Jul 13. PMID 20628086. Sperm associated antigen 8 (SPAG8), a novel regulator of activator of CREM in testis during spermatogenesis. Wu H, et al. FEBS Lett, 2010 Jul 2. PMID 20488182. Proteome analysis of the thalamus and cerebrospinal fluid reveals glycolysis dysfunction and potential biomarkers candidates for schizophrenia. Martins-de-Souza D, et al. J Psychiatr Res, 2010 May 14. PMID 20471030. Evaluation of 172 candidate polymorphisms for association with oligozoospermia or azoospermia in a large cohort of men of European descent. Aston KI, et al. Hum Reprod, 2010 Jun. PMID 20378615. Gene-centric association signals for lipids and apolipoproteins identified via the HumanCVD BeadChip. Talmud PJ, et al. Am J Hum Genet, 2009 Nov. PMID 19913121.