

FKBP1A Antibody (monoclonal) (M01)**Mouse monoclonal antibody raised against a full length recombinant FKBP1A.****Catalog # AT2055a****Specification**

FKBP1A Antibody (monoclonal) (M01) - Product Information

Application	WB, E
Primary Accession	P62942
Other Accession	BC005147
Reactivity	Human
Host	mouse
Clonality	Monoclonal
Isotype	IgG1 kappa
Calculated MW	11951

FKBP1A Antibody (monoclonal) (M01) - Additional Information**Gene ID** 2280**Other Names**

Peptidyl-prolyl cis-trans isomerase FKBP1A, PPlase FKBP1A, 12 kDa FK506-binding protein, 12 kDa FKBP, FKBP-12, Calstabin-1, FK506-binding protein 1A, FKBP-1A, Immunophilin FKBP12, Rotamase, FKBP1A, FKBP1, FKBP12

Target/Specificity

FKBP1A (AAH05147, 1 a.a. ~ 108 a.a) full-length recombinant protein with GST tag. MW of the GST tag alone is 26 KDa.

Dilution

WB~~1:500~1000

E~~N/A

Format

Clear, colorless solution in phosphate buffered saline, pH 7.2 .

Storage

Store at -20°C or lower. Aliquot to avoid repeated freezing and thawing.

Precautions

FKBP1A Antibody (monoclonal) (M01) is for research use only and not for use in diagnostic or therapeutic procedures.

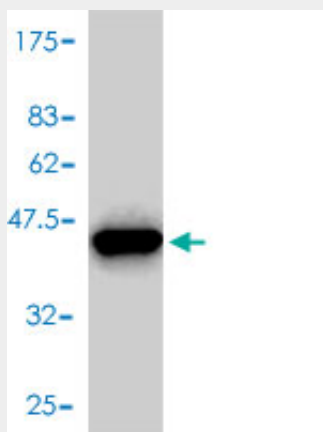
FKBP1A Antibody (monoclonal) (M01) - Protocols

Provided below are standard protocols that you may find useful for product applications.

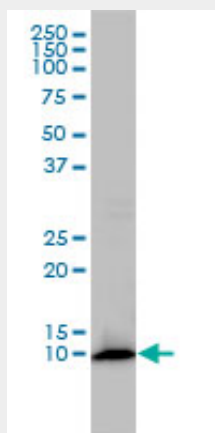
- [Western Blot](#)

- [Blocking Peptides](#)
- [Dot Blot](#)
- [Immunohistochemistry](#)
- [Immunofluorescence](#)
- [Immunoprecipitation](#)
- [Flow Cytometry](#)
- [Cell Culture](#)

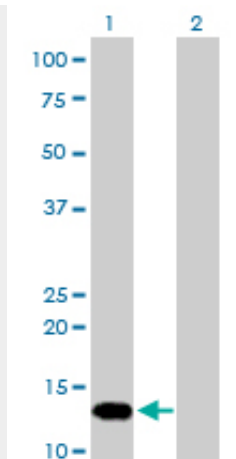
FKBP1A Antibody (monoclonal) (M01) - Images



Antibody Reactive Against Recombinant Protein. Western Blot detection against Immunogen (37.62 KDa) .



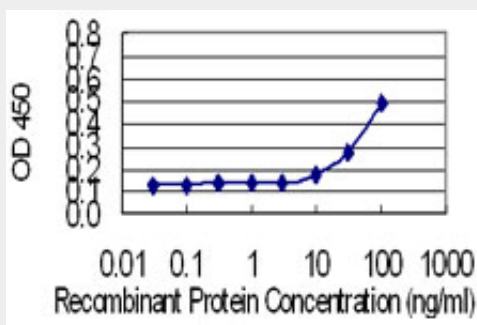
FKBP1A monoclonal antibody (M01), clone 1E5-A12 Western Blot analysis of FKBP1A expression in HL-60 (Cat # AT2055a)



Western Blot analysis of FKBP1A expression in transfected 293T cell line by FKBP1A monoclonal antibody (M01), clone 1E5-A12.

Lane 1: FKBP1A transfected lysate(12 KDa).

Lane 2: Non-transfected lysate.



Detection limit for recombinant GST tagged FKBP1A is 3 ng/ml as a capture antibody.

FKBP1A Antibody (monoclonal) (M01) - Background

The protein encoded by this gene is a member of the immunophilin protein family, which play a role in immunoregulation and basic cellular processes involving protein folding and trafficking. The protein is a cis-trans prolyl isomerase that binds the immunosuppressants FK506 and rapamycin. It interacts with several intracellular signal transduction proteins including type I TGF-beta receptor. It also interacts with multiple intracellular calcium release channels, and coordinates multi-protein complex formation of the tetrameric skeletal muscle ryanodine receptor. In mouse, deletion of this homologous gene causes congenital heart disorder known as noncompaction of left ventricular myocardium. Multiple alternatively spliced variants, encoding the same protein, have been identified. The human genome contains five pseudogenes related to this gene, at least one of which is transcribed.

FKBP1A Antibody (monoclonal) (M01) - References

1. Protein-protein interactions: an application of tus-ter mediated protein microarray system. Sitaraman K, Chatterjee DK. *Methods Mol Biol.* 2011;723:185-200.