

FKBP1B Antibody (monoclonal) (M01)**Mouse monoclonal antibody raised against a full length recombinant FKBP1B.****Catalog # AT2056a****Specification**

FKBP1B Antibody (monoclonal) (M01) - Product Information

| | |
|-------------------|--------------------------|
| Application | WB |
| Primary Accession | P68106 |
| Other Accession | BC002614 |
| Reactivity | Human |
| Host | mouse |
| Clonality | Monoclonal |
| Isotype | IgG1 kappa |
| Calculated MW | 11783 |

FKBP1B Antibody (monoclonal) (M01) - Additional Information**Gene ID** 2281**Other Names**

Peptidyl-prolyl cis-trans isomerase FKBP1B, PPIase FKBP1B, 126 kDa FK506-binding protein, 126 kDa FKBP, FKBP-126, FK506-binding protein 1B, FKBP-1B, Immunophilin FKBP126, Rotamase, h-FKBP-12, FKBP1B, FKBP126, FKBP1L, FKBP9, OTK4

Target/Specificity

FKBP1B (AAH02614, 1 a.a. ~ 80 a.a) full-length recombinant protein with GST tag. MW of the GST tag alone is 26 KDa.

Dilution

WB~~1:500~1000

Format

Clear, colorless solution in phosphate buffered saline, pH 7.2 .

Storage

Store at -20°C or lower. Aliquot to avoid repeated freezing and thawing.

Precautions

FKBP1B Antibody (monoclonal) (M01) is for research use only and not for use in diagnostic or therapeutic procedures.

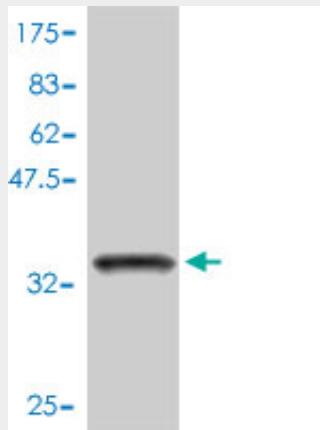
FKBP1B Antibody (monoclonal) (M01) - Protocols

Provided below are standard protocols that you may find useful for product applications.

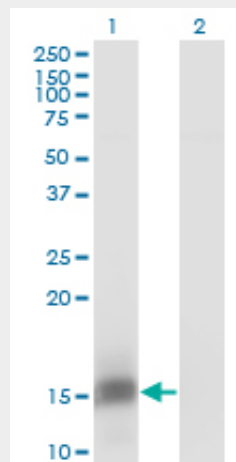
- [Western Blot](#)
- [Blocking Peptides](#)

- [Dot Blot](#)
- [Immunohistochemistry](#)
- [Immunofluorescence](#)
- [Immunoprecipitation](#)
- [Flow Cytometry](#)
- [Cell Culture](#)

FKBP1B Antibody (monoclonal) (M01) - Images



Antibody Reactive Against Recombinant Protein. Western Blot detection against Immunogen (34.54 kDa) .



Western Blot analysis of FKBP1B expression in transfected 293T cell line by FKBP1B monoclonal antibody (M01), clone 4H5-1B6.

Lane 1: FKBP1B transfected lysate (11.8 kDa).
Lane 2: Non-transfected lysate.

FKBP1B Antibody (monoclonal) (M01) - Background

The protein encoded by this gene is a member of the immunophilin protein family, which play a role in immunoregulation and basic cellular processes involving protein folding and trafficking. This encoded protein is a cis-trans prolyl isomerase that binds the immunosuppressants FK506 and rapamycin. It is highly similar to the FK506-binding protein 1A. Its physiological role is thought to be in excitation-contraction coupling in cardiac muscle. There are two alternatively spliced transcript variants of this gene encoding different isoforms.

FKBP1B Antibody (monoclonal) (M01) - References

Kinetics of FKBP12.6 binding to ryanodine receptors in permeabilized cardiac myocytes and effects on Ca sparks. Guo T, et al. Circ Res, 2010 Jun 11. PMID 20431056. Mapping the ryanodine receptor FK506-binding protein subunit using fluorescence resonance energy transfer. Cornea RL, et al. J Biol Chem, 2010 Jun 18. PMID 20404344. FKBP12.6 binding of ryanodine receptors carrying mutations associated with arrhythmogenic cardiac disease. Zissimopoulos S, et al. Biochem J, 2009 Apr 15. PMID 19226252. Genome-wide association studies in an isolated founder population from the Pacific Island of Kosrae. Lowe JK, et al. PLoS Genet, 2009 Feb. PMID 19197348. Removal of FKBP12.6 does not alter the conductance and activation of the cardiac ryanodine receptor or the susceptibility to stress-induced ventricular arrhythmias. Xiao J, et al. J Biol Chem, 2007 Nov 30. PMID 17921453.