

**FMNL2 Antibody (monoclonal) (M01)****Mouse monoclonal antibody raised against a full length recombinant FMNL2.****Catalog # AT2077a****Specification**

---

**FMNL2 Antibody (monoclonal) (M01) - Product Information**

Application	<b>WB</b>
Primary Accession	<a href="#">O96PY5</a>
Other Accession	<a href="#">BC036492</a>
Reactivity	<b>Human</b>
Host	<b>mouse</b>
Clonality	<b>Monoclonal</b>
Isotype	<b>IgG1 Kappa</b>
Calculated MW	<b>123321</b>

**FMNL2 Antibody (monoclonal) (M01) - Additional Information****Gene ID** 114793**Other Names**

Formin-like protein 2, Formin homology 2 domain-containing protein 2, FMNL2, FHOD2, KIAA1902

**Target/Specificity**

FMNL2 (AAH36492, 1 a.a. ~ 178 a.a) full-length recombinant protein with GST tag. MW of the GST tag alone is 26 KDa.

**Dilution**

WB~~1:500~1000

**Format**

Clear, colorless solution in phosphate buffered saline, pH 7.2 .

**Storage**

Store at -20°C or lower. Aliquot to avoid repeated freezing and thawing.

**Precautions**

FMNL2 Antibody (monoclonal) (M01) is for research use only and not for use in diagnostic or therapeutic procedures.

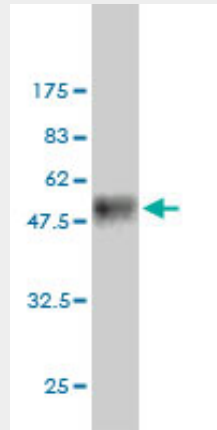
**FMNL2 Antibody (monoclonal) (M01) - Protocols**

Provided below are standard protocols that you may find useful for product applications.

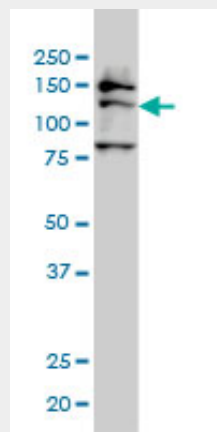
- [Western Blot](#)
- [Blocking Peptides](#)
- [Dot Blot](#)
- [Immunohistochemistry](#)

- [Immunofluorescence](#)
- [Immunoprecipitation](#)
- [Flow Cytometry](#)
- [Cell Culture](#)

### FMNL2 Antibody (monoclonal) (M01) - Images



Antibody Reactive Against Recombinant Protein. Western Blot detection against Immunogen (45.32 KDa) .



FMNL2 monoclonal antibody (M01), clone 2B4 Western Blot analysis of FMNL2 expression in IMR-32 ( (Cat # AT2077a )

### FMNL2 Antibody (monoclonal) (M01) - Background

This gene encodes a formin-related protein. Formin-related proteins have been implicated in morphogenesis, cytokinesis, and cell polarity. Alternatively spliced transcript variants encoding different isoforms have been described but their full-length nature has yet to be determined. [provided by RefSeq]

### FMNL2 Antibody (monoclonal) (M01) - References

1. Down-regulation of formin-like 2 predicts poor prognosis in hepatocellular carcinoma. Liang L, Guan J, Zeng Y, Wang J, Li X, Zhang X, Ding Y. Hum Pathol. 2011 Apr 13. [Epub ahead of print]
2. FMNL2 is a positive regulator of cell motility and metastasis in colorectal carcinoma. Zhu XL, Zeng YF, Guan J, Li YF, Deng YJ, Bian XW, Ding YQ, Liang L. J Pathol. 2011 Jul;224(3):377-88. doi: 10.1002/path.2871. Epub 2011 Apr 19.
3. FMNL2 enhances invasion of colorectal carcinoma by inducing epithelial mesenchymal transition. Li Y, Zhu X, Zeng Y, Wang J, Zhang X, Ding YQ, Liang

L.Mol Cancer Res. 2010 Dec;8(12):1579-90. Epub 2010 Nov 11.4. Formin-like 2 drives amoeboid invasive cell motility downstream of RhoC. Kitzing TM, Wang Y, Pertz O, Copeland JW, Grosse R. Oncogene. 2010 Jan 25. [Epub ahead of print]5. Overexpression of FMNL2 is closely related to metastasis of colorectal cancer. Zhu XL, Liang L, Ding YQ. Int J Colorectal Dis. 2008 Nov;23(11):1041-7. Epub 2008 Jul 30.