

**FTCD Antibody (monoclonal) (M01)****Mouse monoclonal antibody raised against a partial recombinant FTCD.****Catalog # AT2112a****Specification**

---

**FTCD Antibody (monoclonal) (M01) - Product Information**

Application	WB, IHC, IF, E
Primary Accession	<a href="#">O95954</a>
Other Accession	<a href="#">NM_206965</a>
Reactivity	Human
Host	mouse
Clonality	Monoclonal
Isotype	IgG2a Kappa
Calculated MW	58927

**FTCD Antibody (monoclonal) (M01) - Additional Information****Gene ID** 10841**Other Names**

Formimidoyltransferase-cyclodeaminase, Formiminotransferase-cyclodeaminase, FTCD, LCHC1, Glutamate formimidoyltransferase, Glutamate formiminotransferase, Glutamate formyltransferase, Formimidoyltetrahydrofolate cyclodeaminase, Formiminotetrahydrofolate cyclodeaminase, FTCD

**Target/Specificity**

FTCD (NP\_996848, 440 a.a. ~ 541 a.a) partial recombinant protein with GST tag. MW of the GST tag alone is 26 KDa.

**Dilution**

WB~~1:500~1000

IHC~~1:100~500

IF~~1:50~200

E~~N/A

**Format**

Clear, colorless solution in phosphate buffered saline, pH 7.2 .

**Storage**

Store at -20°C or lower. Aliquot to avoid repeated freezing and thawing.

**Precautions**

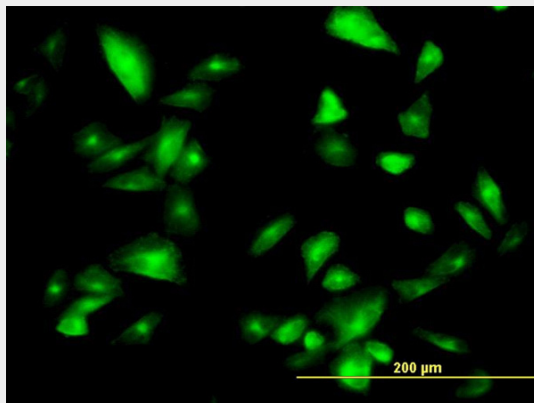
FTCD Antibody (monoclonal) (M01) is for research use only and not for use in diagnostic or therapeutic procedures.

**FTCD Antibody (monoclonal) (M01) - Protocols**

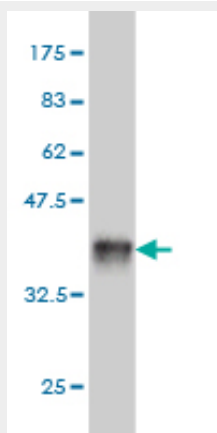
Provided below are standard protocols that you may find useful for product applications.

- [Western Blot](#)
- [Blocking Peptides](#)
- [Dot Blot](#)
- [Immunohistochemistry](#)
- [Immunofluorescence](#)
- [Immunoprecipitation](#)
- [Flow Cytometry](#)
- [Cell Culture](#)

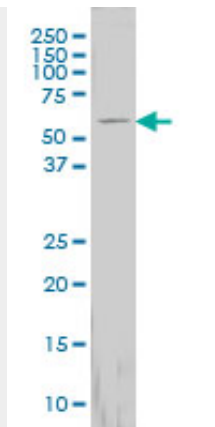
#### FTCD Antibody (monoclonal) (M01) - Images



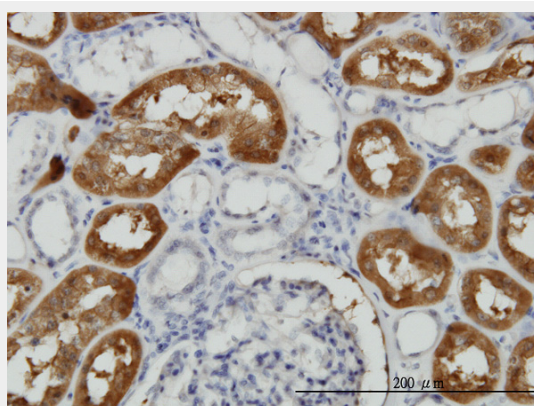
Immunofluorescence of monoclonal antibody to FTCD on HepG2 cell. [antibody concentration 10 ug/ml]



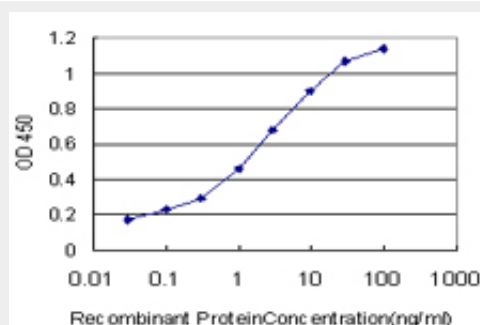
Antibody Reactive Against Recombinant Protein. Western Blot detection against Immunogen (36.96 KDa) .



FTCD monoclonal antibody (M01), clone 3A4 Western Blot analysis of FTCD expression in HepG2 (Cat # AT2112a)



Immunoperoxidase of monoclonal antibody to FTCD on formalin-fixed paraffin-embedded human kidney. [antibody concentration 3 ug/ml]



Detection limit for recombinant GST tagged FTCD is approximately 0.03ng/ml as a capture antibody.

### FTCD Antibody (monoclonal) (M01) - Background

The protein encoded by this gene is a bifunctional enzyme that channels 1-carbon units from formiminoglutamate, a metabolite of the histidine degradation pathway, to the folate pool. Mutations in this gene are associated with glutamate formiminotransferase deficiency. Alternatively spliced transcript variants have been found for this gene.

### FTCD Antibody (monoclonal) (M01) - References

Maternal genes and facial clefts in offspring: a comprehensive search for genetic associations in two population-based cleft studies from Scandinavia. Jugessur A, et al. PLoS One, 2010 Jul 9. PMID

20634891.Variation at the NFATC2 Locus Increases the Risk of Thiazolinedione-Induced Edema in the Diabetes REduction Assessment with ramipril and rosiglitazone Medication (DREAM) Study. Bailey SD, et al. Diabetes Care, 2010 Jul 13. PMID 20628086.Gene-centric association signals for lipids and apolipoproteins identified via the HumanCVD BeadChip. Talmud PJ, et al. Am J Hum Genet, 2009 Nov. PMID 19913121.Transcriptomic and genetic studies identify IL-33 as a candidate gene for Alzheimer's disease. Chapuis J, et al. Mol Psychiatry, 2009 Nov. PMID 19204726.An association study of 45 folate-related genes in spina bifida: Involvement of cubilin (CUBN) and tRNA aspartic acid methyltransferase 1 (TRDMT1). Franke B, et al. Birth Defects Res A Clin Mol Teratol, 2009 Mar. PMID 19161160.