

FXR1 Antibody (monoclonal) (M01)**Mouse monoclonal antibody raised against a partial recombinant FXR1.****Catalog # AT2127a****Specification**

FXR1 Antibody (monoclonal) (M01) - Product Information

Application	WB, IHC, E
Primary Accession	P51114
Other Accession	BC028983
Reactivity	Human
Host	mouse
Clonality	Monoclonal
Isotype	IgG1 kappa
Calculated MW	69721

FXR1 Antibody (monoclonal) (M01) - Additional Information**Gene ID** 8087**Other Names**

Fragile X mental retardation syndrome-related protein 1, hFXR1p, FXR1

Target/Specificity

FXR1 (AAH28983, 121 a.a. ~ 220 a.a) partial recombinant protein with GST tag. MW of the GST tag alone is 26 KDa.

Dilution

WB~~1:500~1000

IHC~~1:100~500

E~~N/A

Format

Clear, colorless solution in phosphate buffered saline, pH 7.2 .

Storage

Store at -20°C or lower. Aliquot to avoid repeated freezing and thawing.

Precautions

FXR1 Antibody (monoclonal) (M01) is for research use only and not for use in diagnostic or therapeutic procedures.

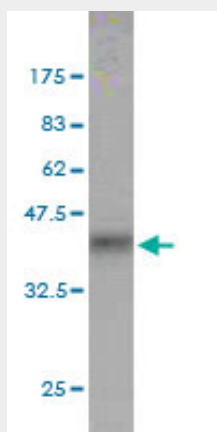
FXR1 Antibody (monoclonal) (M01) - Protocols

Provided below are standard protocols that you may find useful for product applications.

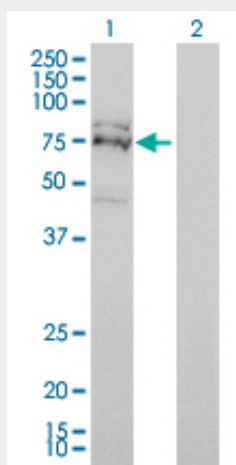
- [Western Blot](#)
- [Blocking Peptides](#)

- [Dot Blot](#)
- [Immunohistochemistry](#)
- [Immunofluorescence](#)
- [Immunoprecipitation](#)
- [Flow Cytometry](#)
- [Cell Culture](#)

FXR1 Antibody (monoclonal) (M01) - Images

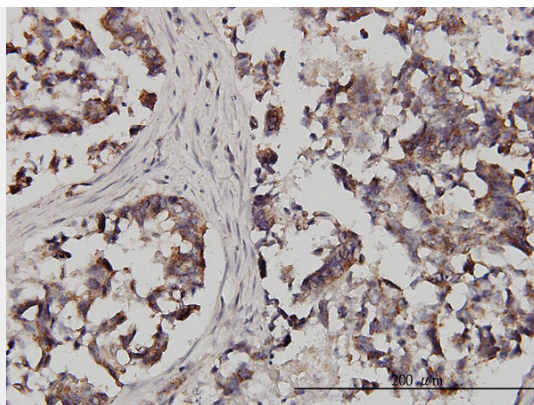


Antibody Reactive Against Recombinant Protein. Western Blot detection against Immunogen (36.63 kDa) .

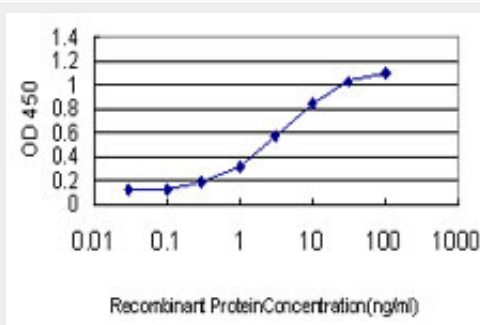


Western Blot analysis of FXR1 expression in transfected 293T cell line by FXR1 monoclonal antibody (M01), clone 2G11.

Lane 1: FXR1 transfected lysate (61 kDa).
Lane 2: Non-transfected lysate.



Immunoperoxidase of monoclonal antibody to FXR1 on formalin-fixed paraffin-embedded human colon adenocarcinoma. [antibody concentration 3 ug/ml]



Detection limit for recombinant GST tagged FXR1 is approximately 0.3ng/ml as a capture antibody.

FXR1 Antibody (monoclonal) (M01) - Background

The protein encoded by this gene is an RNA binding protein that interacts with the functionally-similar proteins FMR1 and FXR2. These proteins shuttle between the nucleus and cytoplasm and associate with polyribosomes, predominantly with the 60S ribosomal subunit. Three transcript variants encoding different isoforms have been found for this gene.

FXR1 Antibody (monoclonal) (M01) - References

Common polygenic variation contributes to risk of schizophrenia and bipolar disorder. International Schizophrenia Consortium, et al. Nature, 2009 Aug 6. PMID 19571811. Discrimination of common and unique RNA-binding activities among Fragile X mental retardation protein paralogs. Darnell JC, et al. Hum Mol Genet, 2009 Sep 1. PMID 19487368. Alteration of expression of muscle specific isoforms of the fragile X related protein 1 (FXR1P) in facioscapulohumeral muscular dystrophy patients. Davidovic L, et al. J Med Genet, 2008 Oct. PMID 18628314. Toward a confocal subcellular atlas of the human proteome. Barbe L, et al. Mol Cell Proteomics, 2008 Mar. PMID 18029348. AU-rich-element-mediated upregulation of translation by FXR1 and Argonaute 2. Vasudevan S, et al. Cell, 2007 Mar 23. PMID 17382880.