

## **G22P1 Antibody (monoclonal) (M01)**

Mouse monoclonal antibody raised against a full length recombinant XRCC6.

Catalog # AT2136a

### **Specification**

---

#### **G22P1 Antibody (monoclonal) (M01) - Product Information**

Application	IF, WB, IHC, E
Primary Accession	<a href="#">P12956</a>
Other Accession	<a href="#">BC008343</a>
Reactivity	Human
Host	mouse
Clonality	Monoclonal
Isotype	IgG1 kappa
Calculated MW	69843

#### **G22P1 Antibody (monoclonal) (M01) - Additional Information**

**Gene ID** 2547

##### **Other Names**

X-ray repair cross-complementing protein 6, 364-, 4299-, 5'-deoxyribose-5-phosphate lyase Ku70, 5'-dRP lyase Ku70, 70 kDa subunit of Ku antigen, ATP-dependent DNA helicase 2 subunit 1, ATP-dependent DNA helicase II 70 kDa subunit, CTC box-binding factor 75 kDa subunit, CTC75, CTCBF, DNA repair protein XRCC6, Lupus Ku autoantigen protein p70, Ku70, Thyroid-lupus autoantigen, TLAA, X-ray repair complementing defective repair in Chinese hamster cells 6, XRCC6, G22P1

##### **Target/Specificity**

XRCC6 (AAH08343.1, 1 a.a. ~ 609 a.a) full-length recombinant protein with GST tag. MW of the GST tag alone is 26 kDa.

##### **Dilution**

WB~~1:500~1000

##### **Format**

Clear, colorless solution in phosphate buffered saline, pH 7.2 .

##### **Storage**

Store at -20°C or lower. Aliquot to avoid repeated freezing and thawing.

##### **Precautions**

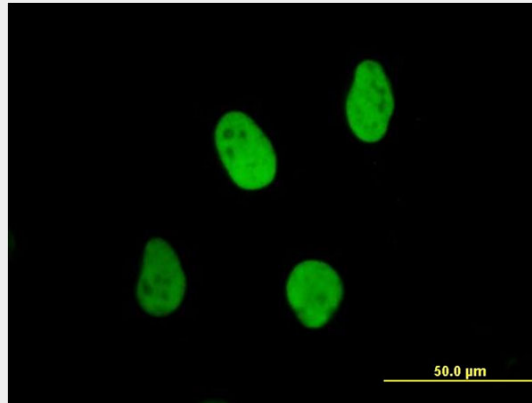
G22P1 Antibody (monoclonal) (M01) is for research use only and not for use in diagnostic or therapeutic procedures.

#### **G22P1 Antibody (monoclonal) (M01) - Protocols**

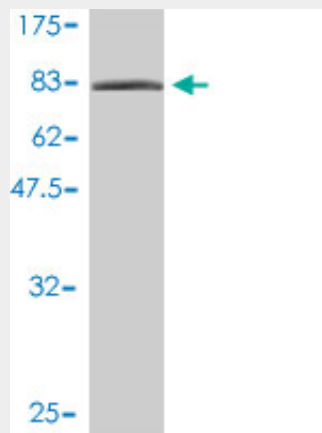
Provided below are standard protocols that you may find useful for product applications.

- [Western Blot](#)
- [Blocking Peptides](#)
- [Dot Blot](#)
- [Immunohistochemistry](#)
- [Immunofluorescence](#)
- [Immunoprecipitation](#)
- [Flow Cytometry](#)
- [Cell Culture](#)

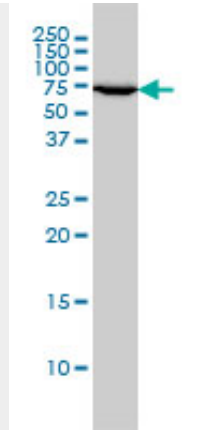
### G22P1 Antibody (monoclonal) (M01) - Images



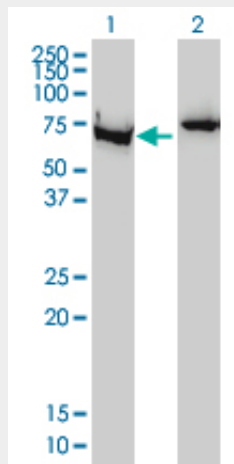
Immunofluorescence of monoclonal antibody to XRCC6 on HeLa cell. [antibody concentration 10 ug/ml]



Antibody Reactive Against Recombinant Protein. Western Blot detection against Immunogen (92.73 KDa) .

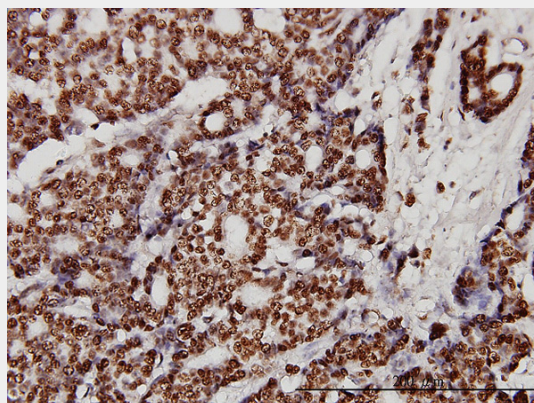


XRCC6 monoclonal antibody (M01), clone 4C2-1A6 Western Blot analysis of XRCC6 expression in C32 ( (Cat # AT2136a )

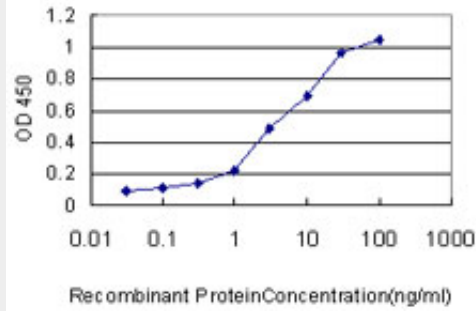


Western Blot analysis of XRCC6 expression in transfected 293T cell line by G22P1 monoclonal antibody (M01), clone 4C2-1A6.

Lane 1: XRCC6 transfected lysate(70 KDa).  
Lane 2: Non-transfected lysate.



Immunoperoxidase of monoclonal antibody to XRCC6 on formalin-fixed paraffin-embedded human breast cancer. [antibody concentration 3 ug/ml]



Detection limit for recombinant GST tagged XRCC6 is approximately 0.1ng/ml as a capture antibody.

### **G22P1 Antibody (monoclonal) (M01) - Background**

The p70/p80 autoantigen is a nuclear complex consisting of two subunits with molecular masses of approximately 70 and 80 kDa. The complex functions as a single-stranded DNA-dependent ATP-dependent helicase. The complex may be involved in the repair of nonhomologous DNA ends such as that required for double-strand break repair, transposition, and V(D)J recombination. High levels of autoantibodies to p70 and p80 have been found in some patients with systemic lupus erythematosus.

### **G22P1 Antibody (monoclonal) (M01) - References**

1. DNA-PKcs Expression Predicts Response to Radiotherapy in Prostate Cancer. Bouchaert P, Guerif S, Debais C, Irani J, Fromont G. *Int J Radiat Oncol Biol Phys*. 2012 Apr 10. [Epub ahead of print]
2. Myonuclear breakdown in sporadic inclusion body myositis is accompanied by DNA double strand breaks. Nishii M, Nakano S, Nakamura S, Wate R, Shinde A, Kaneko S, Kusaka H. *Neuromuscul Disord*. 2011 Feb 23. [Epub ahead of print]