

**GAPDH Antibody (monoclonal) (M03)****Mouse monoclonal antibody raised against a partial recombinant GAPDH.****Catalog # AT2152a****Specification**

---

**GAPDH Antibody (monoclonal) (M03) - Product Information**

Application	WB, IP, E
Primary Accession	<a href="#">P04406</a>
Other Accession	<a href="#">NM_002046</a>
Reactivity	Human
Host	Mouse
Clonality	Monoclonal
Isotype	IgG1 Kappa
Calculated MW	36053

**GAPDH Antibody (monoclonal) (M03) - Additional Information****Gene ID** 2597**Other Names**

Glyceraldehyde-3-phosphate dehydrogenase, GAPDH, Peptidyl-cysteine S-nitrosylase GAPDH, 2699-, GAPDH, GAPD

**Target/Specificity**

GAPDH (NP\_002037, 226 a.a. ~ 335 a.a) partial recombinant protein with GST tag. MW of the GST tag alone is 26 KDa.

**Dilution**

WB~~1:500~1000

IP~~N/A

E~~N/A

**Format**

Clear, colorless solution in phosphate buffered saline, pH 7.2 .

**Storage**

Store at -20°C or lower. Aliquot to avoid repeated freezing and thawing.

**Precautions**

GAPDH Antibody (monoclonal) (M03) is for research use only and not for use in diagnostic or therapeutic procedures.

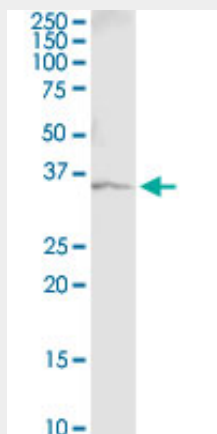
**GAPDH Antibody (monoclonal) (M03) - Protocols**

Provided below are standard protocols that you may find useful for product applications.

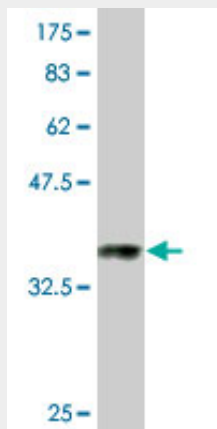
- [Western Blot](#)

- [Blocking Peptides](#)
- [Dot Blot](#)
- [Immunohistochemistry](#)
- [Immunofluorescence](#)
- [Immunoprecipitation](#)
- [Flow Cytometry](#)
- [Cell Culture](#)

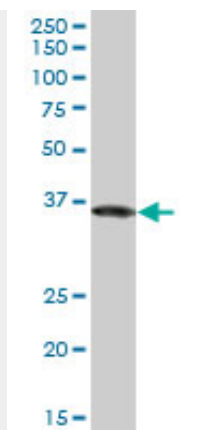
#### **GAPDH Antibody (monoclonal) (M03) - Images**



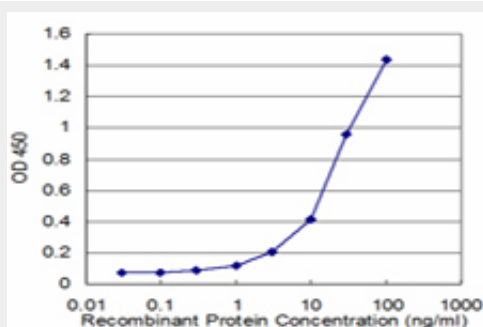
Immunoprecipitation of GAPDH transfected lysate using anti-GAPDH monoclonal antibody and Protein A Magnetic Bead ([U0007](#)), and immunoblotted with GAPDH MaxPab rabbit polyclonal antibody.



Antibody Reactive Against Recombinant Protein. Western Blot detection against Immunogen (37.84 KDa) .



GAPDH monoclonal antibody (M03), clone 1G5. Western Blot analysis of GAPDH expression in HeLa (Cat # AT2152a)



Detection limit for recombinant GST tagged GAPDH is approximately 1ng/ml as a capture antibody.

### **GAPDH Antibody (monoclonal) (M03) - Background**

The product of this gene catalyzes an important energy-yielding step in carbohydrate metabolism, the reversible oxidative phosphorylation of glyceraldehyde-3-phosphate in the presence of inorganic phosphate and nicotinamide adenine dinucleotide (NAD). The enzyme exists as a tetramer of identical chains. Many pseudogenes similar to this locus are present in the human genome.

### **GAPDH Antibody (monoclonal) (M03) - References**

Inhibition of glyceraldehyde-3-phosphate dehydrogenase activity by antibodies present in the cerebrospinal fluid of patients with multiple sclerosis. K?ln J, et al. J Immunol, 2010 Aug 1. PMID 20610654. Proteome analysis of the thalamus and cerebrospinal fluid reveals glycolysis dysfunction and potential biomarkers candidates for schizophrenia. Martins-de-Souza D, et al. J Psychiatr Res, 2010 May 14. PMID 20471030. Sex-specific proteome differences in the anterior cingulate cortex of schizophrenia. Martins-de-Souza D, et al. J Psychiatr Res, 2010 Apr 8. PMID 20381070. Identification of melanoma antigens using a Serological Proteome Approach (SERPA). Suzuki A, et al. Cancer Genomics Proteomics, 2010 Jan-Feb. PMID 20181627. siah-1 Protein is necessary for high glucose-induced glyceraldehyde-3-phosphate dehydrogenase nuclear accumulation and cell death in Muller cells. Yego EC, et al. J Biol Chem, 2010 Jan 29. PMID 19940145.