

GDI1 Antibody (monoclonal) (M08)**Mouse monoclonal antibody raised against a full length recombinant GDI1.****Catalog # AT2187a****Specification**

GDI1 Antibody (monoclonal) (M08) - Product Information

| | |
|-------------------|--------------------------|
| Application | WB, E |
| Primary Accession | P31150 |
| Other Accession | BC000317 |
| Reactivity | Human |
| Host | mouse |
| Clonality | Monoclonal |
| Isotype | IgG2a Kappa |
| Calculated MW | 50583 |

GDI1 Antibody (monoclonal) (M08) - Additional Information**Gene ID** 2664**Other Names**

Rab GDP dissociation inhibitor alpha, Rab GDI alpha, Guanosine diphosphate dissociation inhibitor 1, GDI-1, Oligophrenin-2, Protein XAP-4, GDI1, GDIL, OPHN2, RABGDIA, XAP4

Target/Specificity

GDI1 (AAH00317, 1 a.a. ~ 447 a.a) full-length recombinant protein with GST tag. MW of the GST tag alone is 26 KDa.

Dilution

WB~~1:500~1000

E~~N/A

Format

Clear, colorless solution in phosphate buffered saline, pH 7.2 .

Storage

Store at -20°C or lower. Aliquot to avoid repeated freezing and thawing.

Precautions

GDI1 Antibody (monoclonal) (M08) is for research use only and not for use in diagnostic or therapeutic procedures.

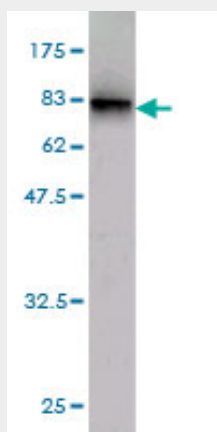
GDI1 Antibody (monoclonal) (M08) - Protocols

Provided below are standard protocols that you may find useful for product applications.

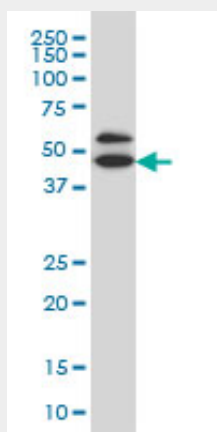
- [Western Blot](#)
- [Blocking Peptides](#)

- [Dot Blot](#)
- [Immunohistochemistry](#)
- [Immunofluorescence](#)
- [Immunoprecipitation](#)
- [Flow Cytometry](#)
- [Cell Culture](#)

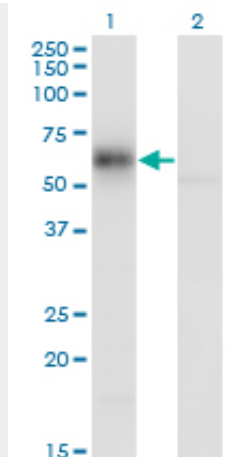
GDI1 Antibody (monoclonal) (M08) - Images



Antibody Reactive Against Recombinant Protein. Western Blot detection against Immunogen (74.91 kDa) .



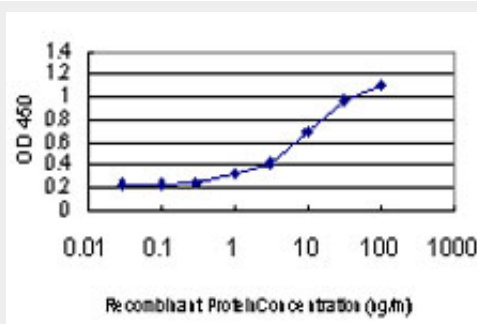
GDI1 monoclonal antibody (M08), clone 1H3 Western Blot analysis of GDI1 expression in IMR-32 (Cat # AT2187a)



Western Blot analysis of GDI1 expression in transfected 293T cell line by GDI1 monoclonal antibody (M08), clone 1H3.

Lane 1: GDI1 transfected lysate(50.6 KDa).

Lane 2: Non-transfected lysate.



Detection limit for recombinant GST tagged GDI1 is approximately 0.3ng/ml as a capture antibody.

GDI1 Antibody (monoclonal) (M08) - Background

GDP dissociation inhibitors are proteins that regulate the GDP-GTP exchange reaction of members of the rab family, small GTP-binding proteins of the ras superfamily, that are involved in vesicular trafficking of molecules between cellular organelles. GDIs slow the rate of dissociation of GDP from rab proteins and release GDP from membrane-bound rabs. GDI1 is expressed primarily in neural and sensory tissues. Mutations in GDI1 have been linked to X-linked nonspecific mental retardation.

GDI1 Antibody (monoclonal) (M08) - References

Sex-specific proteome differences in the anterior cingulate cortex of schizophrenia. Martins-de-Souza D, et al. J Psychiatr Res, 2010 Apr 8. PMID 20381070. Mutant prion protein expression is associated with an alteration of the Rab GDP dissociation inhibitor alpha (GDI)/Rab11 pathway. Massignan T, et al. Mol Cell Proteomics, 2010 Apr. PMID 19996123. GDI-1 preferably interacts with Rab10 in insulin-stimulated GLUT4 translocation. Chen Y, et al. Biochem J, 2009 Aug 13. PMID 19570034. [Relationship between the polymorphisms of GDI1, children NSMR and their intelligence in Qinba region] Zhang KJ, et al. Yi Chuan, 2008 May. PMID 18487148. Large-scale mapping of human protein-protein interactions by mass spectrometry. Ewing RM, et al. Mol Syst Biol, 2007. PMID 17353931.