

GEMIN7 Antibody (monoclonal) (M01)**Mouse monoclonal antibody raised against a full length recombinant GEMIN7.****Catalog # AT2190a****Specification**

GEMIN7 Antibody (monoclonal) (M01) - Product Information

| | |
|-------------------|--------------------------|
| Application | WB, E |
| Primary Accession | O9H840 |
| Other Accession | BC007793 |
| Reactivity | Human |
| Host | mouse |
| Clonality | Monoclonal |
| Isotype | IgG1 Kappa |
| Calculated MW | 14537 |

GEMIN7 Antibody (monoclonal) (M01) - Additional Information**Gene ID** 79760**Other Names**

Gem-associated protein 7, Gemin-7, SIP3, GEMIN7

Target/Specificity

GEMIN7 (AAH07793, 1 a.a. ~ 131 a.a) full-length recombinant protein with GST tag. MW of the GST tag alone is 26 KDa.

Dilution

WB~~1:500~1000

E~~N/A

Format

Clear, colorless solution in phosphate buffered saline, pH 7.2 .

Storage

Store at -20°C or lower. Aliquot to avoid repeated freezing and thawing.

Precautions

GEMIN7 Antibody (monoclonal) (M01) is for research use only and not for use in diagnostic or therapeutic procedures.

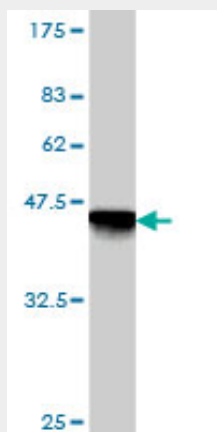
GEMIN7 Antibody (monoclonal) (M01) - Protocols

Provided below are standard protocols that you may find useful for product applications.

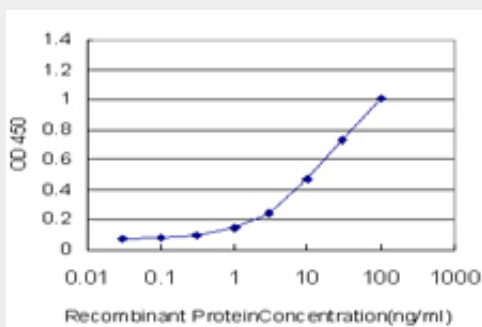
- [Western Blot](#)
- [Blocking Peptides](#)
- [Dot Blot](#)

- [Immunohistochemistry](#)
- [Immunofluorescence](#)
- [Immunoprecipitation](#)
- [Flow Cytometry](#)
- [Cell Culture](#)

GEMIN7 Antibody (monoclonal) (M01) - Images



Antibody Reactive Against Recombinant Protein. Western Blot detection against Immunogen (40.15 kDa) .



Detection limit for recombinant GST tagged GEMIN7 is approximately 0.3 ng/ml as a capture antibody.

GEMIN7 Antibody (monoclonal) (M01) - Background

The protein encoded by this gene is a component of the core SMN complex, which is required for pre-mRNA splicing in the nucleus. The encoded protein is found in the nucleoplasm, in nuclear gems (Gemini of Cajal bodies), and in the cytoplasm. Three transcript variants encoding the same protein have been found for this gene.

GEMIN7 Antibody (monoclonal) (M01) - References

Gemin8 is required for the architecture and function of the survival motor neuron complex. Carissimi C, et al. J Biol Chem, 2006 Dec 1. PMID 17023415. Identification of intrahepatic cholangiocarcinoma related genes by comparison with normal liver tissues using expressed sequence tags. Wang AG, et al. Biochem Biophys Res Commun, 2006 Jul 7. PMID 16712791. Towards a proteome-scale map of the human protein-protein interaction network. Rual JF, et al. Nature, 2005 Oct 20. PMID 16189514. A human protein-protein interaction network: a resource for annotating the proteome. Stelzl U, et al. Cell, 2005 Sep 23. PMID 16169070. Unrip, a factor implicated in cap-independent translation, associates with the cytosolic SMN complex and influences its intracellular localization. Grimm M, et al. Hum Mol Genet, 2005 Oct 15. PMID

16159890.