

## **GLI3 Antibody (monoclonal) (M01)**

Mouse monoclonal antibody raised against a partial recombinant GLI3.

Catalog # AT2206a

### **Specification**

---

#### **GLI3 Antibody (monoclonal) (M01) - Product Information**

Application	WB, IF, E
Primary Accession	<a href="#">P10071</a>
Other Accession	<a href="#">NM_000168</a>
Reactivity	Human
Host	mouse
Clonality	Monoclonal
Isotype	IgG2a Kappa
Calculated MW	169863

#### **GLI3 Antibody (monoclonal) (M01) - Additional Information**

**Gene ID** 2737

##### **Other Names**

Transcriptional activator GLI3, GLI3 form of 190 kDa, GLI3-190, GLI3 full length protein, GLI3FL, Transcriptional repressor GLI3R, GLI3 C-terminally truncated form, GLI3 form of 83 kDa, GLI3-83, GLI3

##### **Target/Specificity**

GLI3 (NP\_000159, 1 a.a. ~ 110 a.a) partial recombinant protein with GST tag. MW of the GST tag alone is 26 KDa.

##### **Dilution**

WB~~1:500~1000

IF~~1:50~200

E~~N/A

##### **Format**

Clear, colorless solution in phosphate buffered saline, pH 7.2 .

##### **Storage**

Store at -20°C or lower. Aliquot to avoid repeated freezing and thawing.

##### **Precautions**

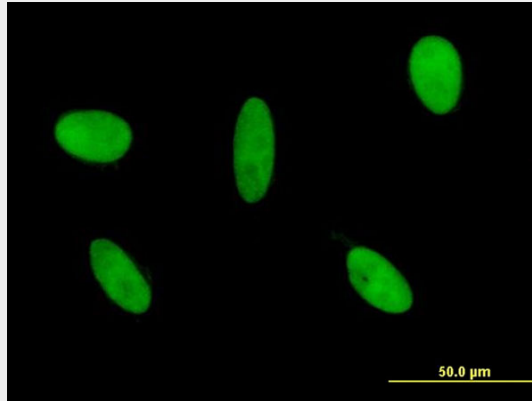
GLI3 Antibody (monoclonal) (M01) is for research use only and not for use in diagnostic or therapeutic procedures.

#### **GLI3 Antibody (monoclonal) (M01) - Protocols**

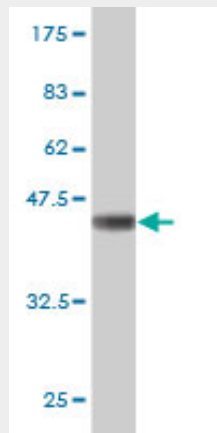
Provided below are standard protocols that you may find useful for product applications.

- [Western Blot](#)
- [Blocking Peptides](#)
- [Dot Blot](#)
- [Immunohistochemistry](#)
- [Immunofluorescence](#)
- [Immunoprecipitation](#)
- [Flow Cytometry](#)
- [Cell Culture](#)

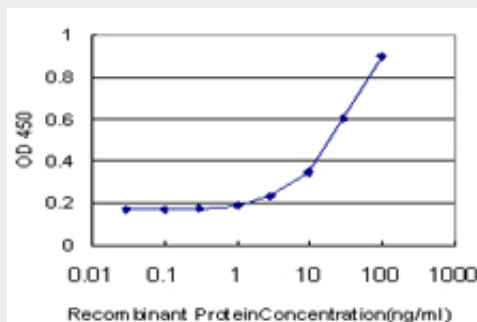
### GLI3 Antibody (monoclonal) (M01) - Images



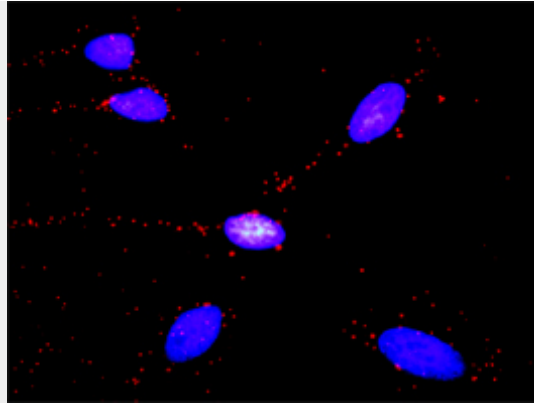
Immunofluorescence of monoclonal antibody to GLI3 on HeLa cell . [antibody concentration 10 ug/ml]



Antibody Reactive Against Recombinant Protein. Western Blot detection against Immunogen (37.84 KDa) .



Detection limit for recombinant GST tagged GLI3 is approximately 1ng/ml as a capture antibody.



Proximity Ligation Analysis of protein-protein interactions between SMAD1 and GLI3. HeLa cells were stained with anti-SMAD1 rabbit purified polyclonal 1:1200 and anti-GLI3 mouse monoclonal antibody 1:50. Each red dot represents the detection of protein-protein interaction complex, and nuclei were counterstained with DAPI (blue).

### **GLI3 Antibody (monoclonal) (M01) - Background**

This gene encodes a protein which belongs to the C2H2-type zinc finger proteins subclass of the Gli family. They are characterized as DNA-binding transcription factors and are mediators of Sonic hedgehog (Shh) signaling. The protein encoded by this gene localizes in the cytoplasm and activates patched Drosophila homolog (PTCH) gene expression. It is also thought to play a role during embryogenesis. Mutations in this gene have been associated with several diseases, including Greig cephalopolysyndactyly syndrome, Pallister-Hall syndrome, preaxial polydactyly type IV, and postaxial polydactyly types A1 and B.

### **GLI3 Antibody (monoclonal) (M01) - References**

Molecular analysis expands the spectrum of phenotypes associated with GLI3 mutations. Johnston JJ, et al. Hum Mutat, 2010 Jul 29. PMID 20672375. Maternal genes and facial clefts in offspring: a comprehensive search for genetic associations in two population-based cleft studies from Scandinavia. Jugessur A, et al. PLoS One, 2010 Jul 9. PMID 20634891. Genome-wide association study for colorectal cancer identifies risk polymorphisms in German familial cases and implicates MAPK signalling pathways in disease susceptibility. Lascorz J, et al. Carcinogenesis, 2010 Sep. PMID 20610541. Human intronic enhancers control distinct sub-domains of Gli3 expression during mouse CNS and limb development. Abbasi AA, et al. BMC Dev Biol, 2010 Apr 28. PMID 20426846. Birth defects caused by mutations in human GLI3 and mouse Gli3 genes. Naruse I, et al. Congenit Anom (Kyoto), 2010 Mar. PMID 20201963.