

GLMN Antibody (monoclonal) (M01)**Mouse monoclonal antibody raised against a full length recombinant GLMN.****Catalog # AT2207a****Specification**

GLMN Antibody (monoclonal) (M01) - Product Information

Application	WB, IF, IP
Primary Accession	O92990
Other Accession	BC001257
Reactivity	Human
Host	mouse
Clonality	Monoclonal
Isotype	IgG1 Kappa
Calculated MW	68208

GLMN Antibody (monoclonal) (M01) - Additional Information**Gene ID** 11146**Other Names**

Glomulin, FK506-binding protein-associated protein, FAP, FKBP-associated protein, GLMN, FAP48, FAP68, VMGLOM

Target/Specificity

GLMN (AAH01257, 1 a.a. ~ 594 a.a) full-length recombinant protein with GST tag. MW of the GST tag alone is 26 KDa.

Dilution

WB~~1:500~1000

IF~~1:50~200

IP~~N/A

Format

Clear, colorless solution in phosphate buffered saline, pH 7.2 .

Storage

Store at -20°C or lower. Aliquot to avoid repeated freezing and thawing.

Precautions

GLMN Antibody (monoclonal) (M01) is for research use only and not for use in diagnostic or therapeutic procedures.

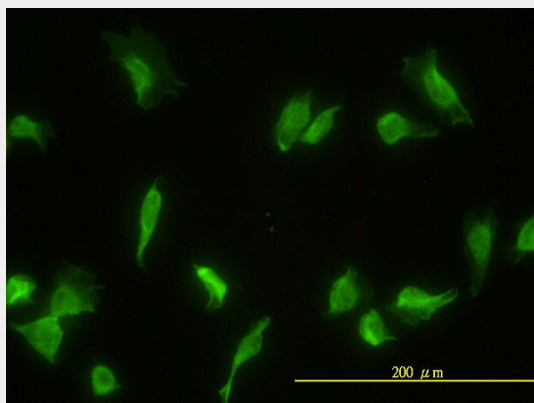
GLMN Antibody (monoclonal) (M01) - Protocols

Provided below are standard protocols that you may find useful for product applications.

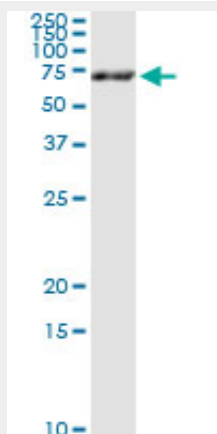
- [Western Blot](#)

- [Blocking Peptides](#)
- [Dot Blot](#)
- [Immunohistochemistry](#)
- [Immunofluorescence](#)
- [Immunoprecipitation](#)
- [Flow Cytometry](#)
- [Cell Culture](#)

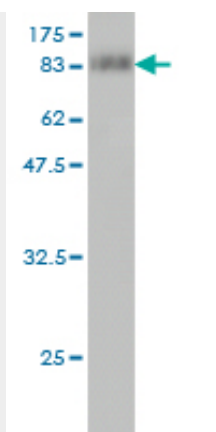
GLMN Antibody (monoclonal) (M01) - Images



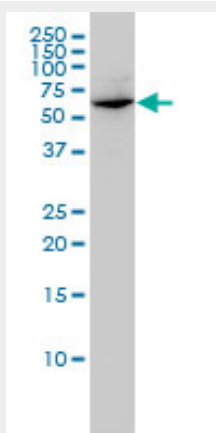
Immunofluorescence of monoclonal antibody to GLMN on HeLa cell. [antibody concentration 20 ug/ml]



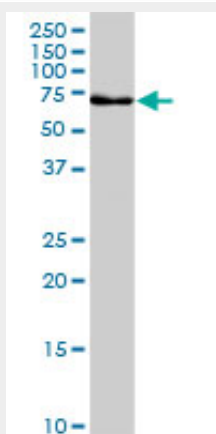
Immunoprecipitation of GLMN transfected lysate using anti-GLMN monoclonal antibody and Protein A Magnetic Bead ([U0007](#)), and immunoblotted with GLMN MaxPab rabbit polyclonal antibody.



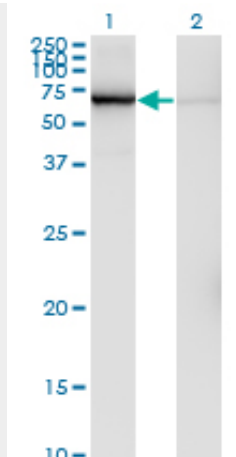
Antibody Reactive Against Recombinant Protein. Western Blot detection against Immunogen (91.08 KDa) .



GLMN monoclonal antibody (M01), clone 1C12. Western Blot analysis of GLMN expression in HL-60 (Cat # AT2207a)



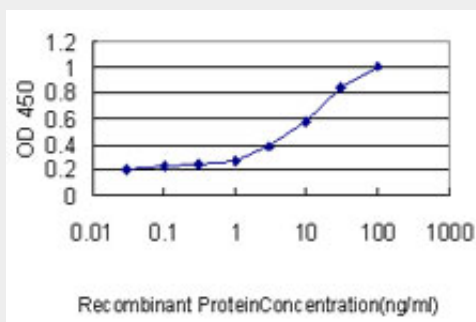
GLMN monoclonal antibody (M01), clone 1C12. Western Blot analysis of GLMN expression in Jurkat (Cat # AT2207a)



Western Blot analysis of GLMN expression in transfected 293T cell line by GLMN monoclonal antibody (M01), clone 1C12.

Lane 1: GLMN transfected lysate(68.2 KDa).

Lane 2: Non-transfected lysate.



Detection limit for recombinant GST tagged GLMN is approximately 0.03ng/ml as a capture antibody.

GLMN Antibody (monoclonal) (M01) - Background

This gene encodes a phosphorylated protein that is a member of a Skp1-Cullin-F-box-like complex. The protein is essential for normal development of the vasculature and mutations in this gene have been associated with glomuvenous malformations, also called glomangiomas. Alternatively spliced variants that encode different protein isoforms have been described but the full-length nature of only one has been determined.

GLMN Antibody (monoclonal) (M01) - References

Diversification of transcriptional modulation: large-scale identification and characterization of putative alternative promoters of human genes. Kimura K, et al. *Genome Res*, 2006 Jan. PMID 16344560. A human protein-protein interaction network: a resource for annotating the proteome. Stelzl U, et al. *Cell*, 2005 Sep 23. PMID 16169070. The status, quality, and expansion of the NIH full-length cDNA project: the Mammalian Gene Collection (MGC). Gerhard DS, et al. *Genome Res*, 2004 Oct. PMID 15489334. Targeted disruption of p185/Cul7 gene results in abnormal vascular morphogenesis. Arai T, et al. *Proc Natl Acad Sci U S A*, 2003 Aug 19. PMID 12904573. Vascular malformations: localized defects in vascular morphogenesis. Brouillard P, et al. *Clin Genet*, 2003 May. PMID 12752563.