

**GMEB1 Antibody (monoclonal) (M01)****Mouse monoclonal antibody raised against a partial recombinant GMEB1.****Catalog # AT2217a****Specification**

---

**GMEB1 Antibody (monoclonal) (M01) - Product Information**

Application	WB, IHC, IF, E
Primary Accession	<a href="#">O9Y692</a>
Other Accession	<a href="#">NM_024482</a>
Reactivity	Human
Host	mouse
Clonality	Monoclonal
Isotype	IgG2a Kappa
Calculated MW	62591

**GMEB1 Antibody (monoclonal) (M01) - Additional Information****Gene ID** 10691**Other Names**

Glucocorticoid modulatory element-binding protein 1, GMEB-1, DNA-binding protein p96PIF, Parvovirus initiation factor p96, PIF p96, GMEB1

**Target/Specificity**

GMEB1 (NP\_077808, 467 a.a. ~ 563 a.a) partial recombinant protein with GST tag. MW of the GST tag alone is 26 KDa.

**Dilution**

WB~~1:500~1000

IHC~~1:100~500

IF~~1:50~200

E~~N/A

**Format**

Clear, colorless solution in phosphate buffered saline, pH 7.2 .

**Storage**

Store at -20°C or lower. Aliquot to avoid repeated freezing and thawing.

**Precautions**

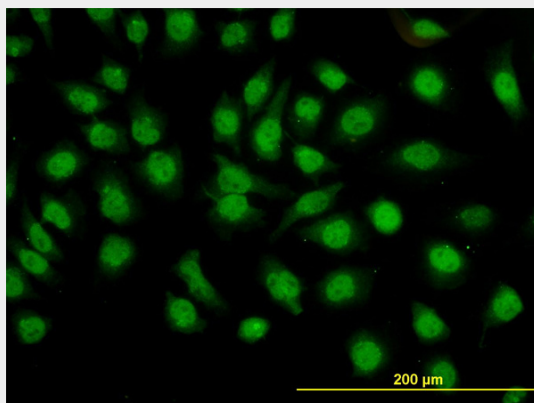
GMEB1 Antibody (monoclonal) (M01) is for research use only and not for use in diagnostic or therapeutic procedures.

**GMEB1 Antibody (monoclonal) (M01) - Protocols**

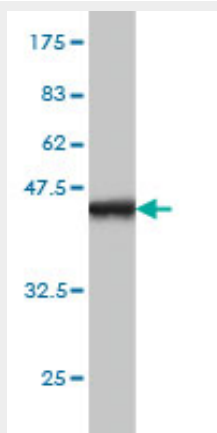
Provided below are standard protocols that you may find useful for product applications.

- [Western Blot](#)
- [Blocking Peptides](#)
- [Dot Blot](#)
- [Immunohistochemistry](#)
- [Immunofluorescence](#)
- [Immunoprecipitation](#)
- [Flow Cytometry](#)
- [Cell Culture](#)

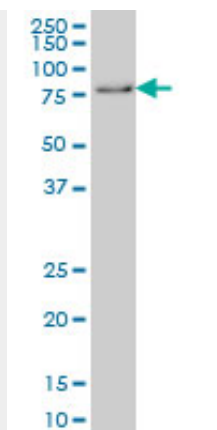
#### GMEB1 Antibody (monoclonal) (M01) - Images



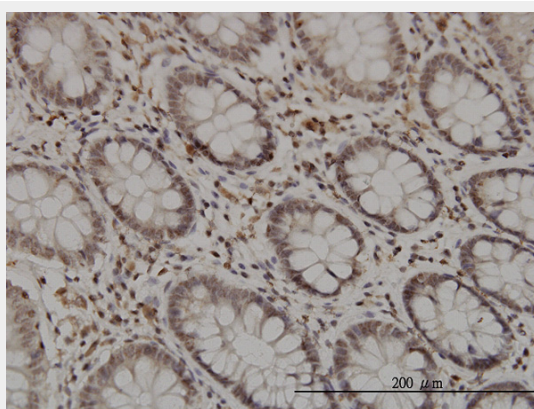
Immunofluorescence of monoclonal antibody to GMEB1 on HeLa cell. [antibody concentration 10 ug/ml]



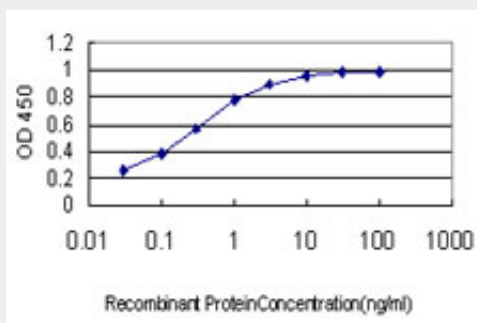
Antibody Reactive Against Recombinant Protein. Western Blot detection against Immunogen (36.41 KDa) .



GMEB1 monoclonal antibody (M01), clone 2A8 Western Blot analysis of GMEB1 expression in HeLa S3 NE (Cat # AT2217a)



Immunoperoxidase of monoclonal antibody to GMEB1 on formalin-fixed paraffin-embedded human colon. [antibody concentration 3 ug/ml]



Detection limit for recombinant GST tagged GMEB1 is approximately 0.03ng/ml as a capture antibody.

### **GMEB1 Antibody (monoclonal) (M01) - Background**

This gene is a member of KDWK gene family. The product of this gene associates with GMEB2 protein, and the complex is essential for parvovirus DNA replication. Study of rat homolog implicates the role of this gene in modulation of transactivation by the glucocorticoid receptor bound to glucocorticoid response elements. Two alternative spliced transcript variants encoding different isoforms exist.

### **GMEB1 Antibody (monoclonal) (M01) - References**

GMEB1, a novel endogenous caspase inhibitor, prevents hypoxia- and oxidative stress-induced

neuronal apoptosis. Nakagawa T, et al. Neurosci Lett, 2008 Jun 13. PMID 18455874. Muscle RING-finger protein-1 (MuRF1) as a connector of muscle energy metabolism and protein synthesis. Koyama S, et al. J Mol Biol, 2008 Mar 7. PMID 18222470. A probability-based approach for high-throughput protein phosphorylation analysis and site localization. Beausoleil SA, et al. Nat Biotechnol, 2006 Oct. PMID 16964243. Glucocorticoid modulatory element-binding protein 1 binds to initiator procaspases and inhibits ischemia-induced apoptosis and neuronal injury. Tsuruma K, et al. J Biol Chem, 2006 Apr 21. PMID 16497673. Regulation of procaspase-2 by glucocorticoid modulatory element-binding protein 1 through the interaction with caspase recruitment domain. Tsuruma K, et al. Biochem Biophys Res Commun, 2004 Dec 24. PMID 15555560.