

GOLGA1 Antibody (monoclonal) (M01)**Mouse monoclonal antibody raised against a partial recombinant GOLGA1.****Catalog # AT2235a****Specification**

GOLGA1 Antibody (monoclonal) (M01) - Product Information

Application	WB, E
Primary Accession	O92805
Other Accession	NM_002077
Reactivity	Human
Host	mouse
Clonality	Monoclonal
Isotype	IgG2a Kappa
Calculated MW	88184

GOLGA1 Antibody (monoclonal) (M01) - Additional Information**Gene ID** 2800**Other Names**

Golgin subfamily A member 1, Golgin-97, GOLGA1

Target/Specificity

GOLGA1 (NP_002068, 668 a.a. ~ 767 a.a) partial recombinant protein with GST tag. MW of the GST tag alone is 26 KDa.

Dilution

WB~~1:500~1000

E~~N/A

Format

Clear, colorless solution in phosphate buffered saline, pH 7.2 .

Storage

Store at -20°C or lower. Aliquot to avoid repeated freezing and thawing.

Precautions

GOLGA1 Antibody (monoclonal) (M01) is for research use only and not for use in diagnostic or therapeutic procedures.

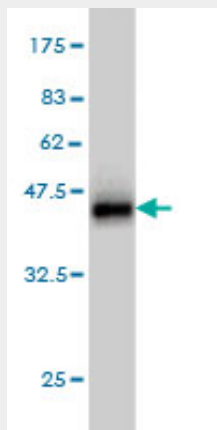
GOLGA1 Antibody (monoclonal) (M01) - Protocols

Provided below are standard protocols that you may find useful for product applications.

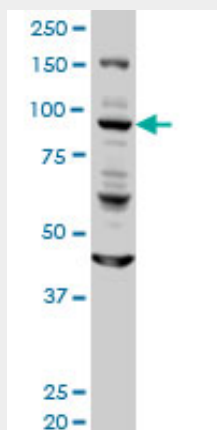
- [Western Blot](#)
- [Blocking Peptides](#)
- [Dot Blot](#)

- [Immunohistochemistry](#)
- [Immunofluorescence](#)
- [Immunoprecipitation](#)
- [Flow Cytometry](#)
- [Cell Culture](#)

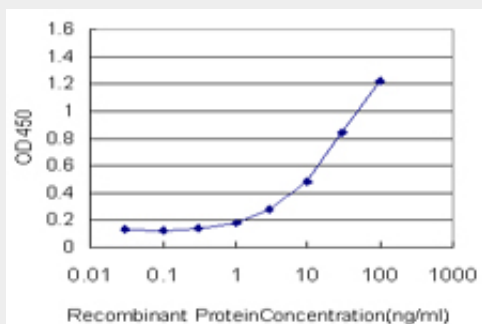
GOLGA1 Antibody (monoclonal) (M01) - Images



Antibody Reactive Against Recombinant Protein. Western Blot detection against Immunogen (36.74 kDa) .



GOLGA1 monoclonal antibody (M01), clone 6G3 Western Blot analysis of GOLGA1 expression in HeLa (Cat # AT2235a)



Detection limit for recombinant GST tagged GOLGA1 is approximately 0.3 ng/ml as a capture antibody.

GOLGA1 Antibody (monoclonal) (M01) - Background

The Golgi apparatus, which participates in glycosylation and transport of proteins and lipids in the secretory pathway, consists of a series of stacked cisternae (flattened membrane sacs). Interactions between the Golgi and microtubules are thought to be important for the reorganization of the Golgi after it fragments during mitosis. This gene encodes one of the golgins, a family of proteins localized to the Golgi. This encoded protein is associated with Sjogren's syndrome.

GOLGA1 Antibody (monoclonal) (M01) - References

1.The SARS Coronavirus E Protein Interacts with PALS1 and Alters Tight Junction Formation and Epithelial Morphogenesis.Teoh KT, Siu YL, Chan WL, Schluter MA, Liu CJ, Peiris JS, Bruzzone R, Margolis B, Nal B.Mol Biol Cell. 2010 Nov;21(22):3838-52. Epub 2010 Sep 22.