

**GSC Antibody (monoclonal) (M03)**  
**Mouse monoclonal antibody raised against a partial recombinant GSC.**  
**Catalog # AT2268a**

## Specification

---

### GSC Antibody (monoclonal) (M03) - Product Information

Application	WB, E
Primary Accession	<a href="#">P56915</a>
Other Accession	<a href="#">NM_173849</a>
Reactivity	Human
Host	mouse
Clonality	Monoclonal
Isotype	IgG2a Kappa
Calculated MW	28150

### GSC Antibody (monoclonal) (M03) - Additional Information

**Gene ID** 145258

#### Other Names

Homeobox protein goosecoid, GSC

#### Target/Specificity

GSC (NP\_776248, 151 a.a. ~ 257 a.a) partial recombinant protein with GST tag. MW of the GST tag alone is 26 KDa.

#### Dilution

WB~~1:500~1000

E~~N/A

#### Format

Clear, colorless solution in phosphate buffered saline, pH 7.2 .

#### Storage

Store at -20°C or lower. Aliquot to avoid repeated freezing and thawing.

#### Precautions

GSC Antibody (monoclonal) (M03) is for research use only and not for use in diagnostic or therapeutic procedures.

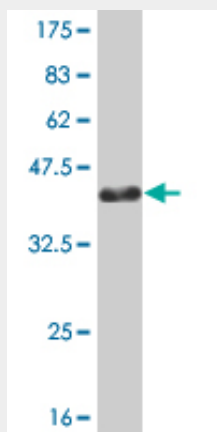
### GSC Antibody (monoclonal) (M03) - Protocols

Provided below are standard protocols that you may find useful for product applications.

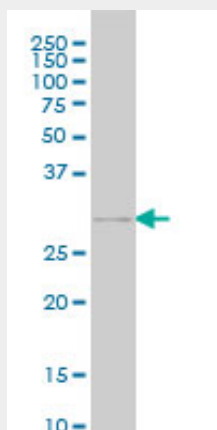
- [Western Blot](#)
- [Blocking Peptides](#)
- [Dot Blot](#)

- [Immunohistochemistry](#)
- [Immunofluorescence](#)
- [Immunoprecipitation](#)
- [Flow Cytometry](#)
- [Cell Culture](#)

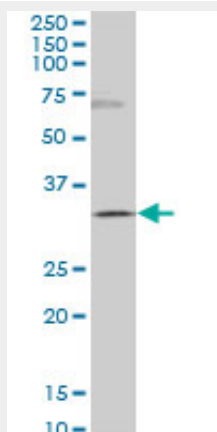
### GSC Antibody (monoclonal) (M03) - Images



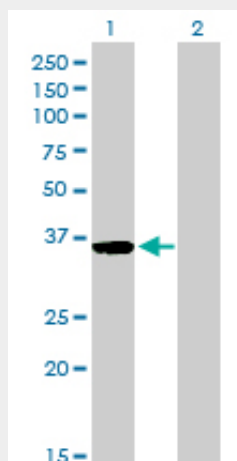
Antibody Reactive Against Recombinant Protein. Western Blot detection against Immunogen (37.51 kDa) .



GSC monoclonal antibody (M03), clone 3D11 Western Blot analysis of GSC expression in COLO 320 HSR ( (Cat # AT2268a )



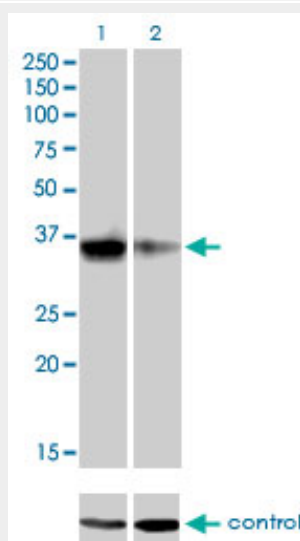
GSC monoclonal antibody (M03), clone 3D11. Western Blot analysis of GSC expression in SJCRH30 (Cat # AT2268a)



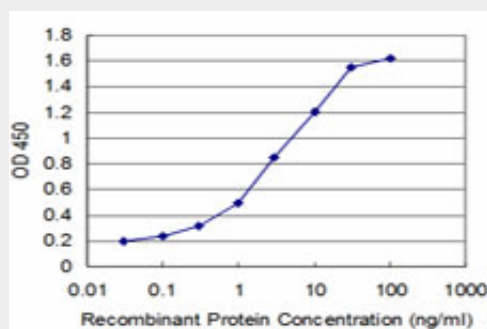
Western Blot analysis of GSC expression in transfected 293T cell line by GSC monoclonal antibody (M03), clone 3D11.

Lane 1: GSC transfected lysate(28.1 KDa).

Lane 2: Non-transfected lysate.



Western blot analysis of GSC over-expressed 293 cell line, cotransfected with GSC Validated Chimera RNAi (Cat # AT2268a)



Detection limit for recombinant GST tagged GSC is approximately 0.3ng/ml as a capture

antibody.

### **GSC Antibody (monoclonal) (M03) - Background**

This gene encodes a member of the bicoid subfamily of the paired (PRD) homeobox family of proteins. The encoded protein acts as a transcription factor and may be autoregulatory. A similar protein in mice plays a role in craniofacial and rib cage development during embryogenesis.

### **GSC Antibody (monoclonal) (M03) - References**

Pedigree and genetic study of a bilateral congenital microtia family. Zhang Q, et al. Plast Reconstr Surg, 2010 Mar. PMID 20195123. Environmental and genetic factors associated with congenital microtia: a case-control study in Jiangsu, China, 2004 to 2007. Zhang QG, et al. Plast Reconstr Surg, 2009 Oct. PMID 19935299. A genome-wide association study identifies a novel major locus for glycemic control in type 1 diabetes, as measured by both A1C and glucose. Paterson AD, et al. Diabetes, 2010 Feb. PMID 19875614. A child with deletion (14)(q24.3q32.13) and auditory neuropathy. Schlade-Bartusiak K, et al. Am J Med Genet A, 2008 Jan 1. PMID 18074379. The Spemann organizer gene, Goosecoid, promotes tumor metastasis. Hartwell KA, et al. Proc Natl Acad Sci U S A, 2006 Dec 12. PMID 17142318.