

**GSDMDC1 Antibody (monoclonal) (M01)****Mouse monoclonal antibody raised against a full length recombinant GSDMDC1.****Catalog # AT2269a****Specification**

---

**GSDMDC1 Antibody (monoclonal) (M01) - Product Information**

Application	WB, IHC, IF, E
Primary Accession	<a href="#">P57764</a>
Other Accession	<a href="#">BC008904</a>
Reactivity	Human
Host	mouse
Clonality	Monoclonal
Isotype	IgG1 kappa
Calculated MW	52801

**GSDMDC1 Antibody (monoclonal) (M01) - Additional Information****Gene ID** 79792**Other Names**

Gasdermin-D, Gasdermin domain-containing protein 1, GSDMD, DFNA5L, GSDMDC1

**Target/Specificity**

GSDMDC1 (AAH08904, 1 a.a. ~ 484 a.a) full-length recombinant protein with GST tag. MW of the GST tag alone is 26 KDa.

**Dilution**

WB~~1:500~1000

IHC~~1:100~500

IF~~1:50~200

E~~N/A

**Format**

Clear, colorless solution in phosphate buffered saline, pH 7.2 .

**Storage**

Store at -20°C or lower. Aliquot to avoid repeated freezing and thawing.

**Precautions**

GSDMDC1 Antibody (monoclonal) (M01) is for research use only and not for use in diagnostic or therapeutic procedures.

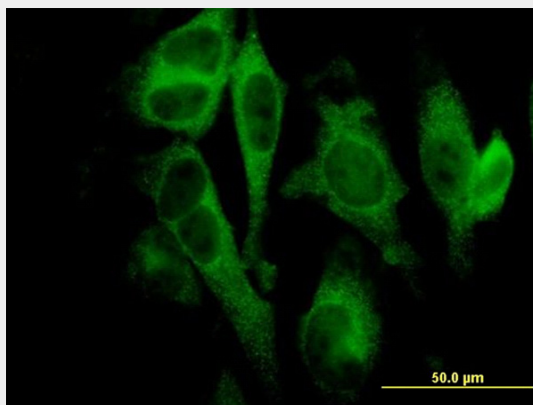
**GSDMDC1 Antibody (monoclonal) (M01) - Protocols**

Provided below are standard protocols that you may find useful for product applications.

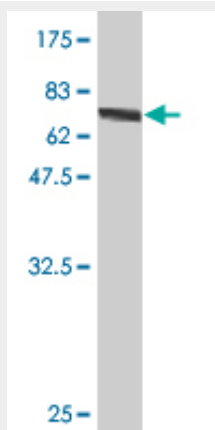
- [Western Blot](#)

- [Blocking Peptides](#)
- [Dot Blot](#)
- [Immunohistochemistry](#)
- [Immunofluorescence](#)
- [Immunoprecipitation](#)
- [Flow Cytometry](#)
- [Cell Culture](#)

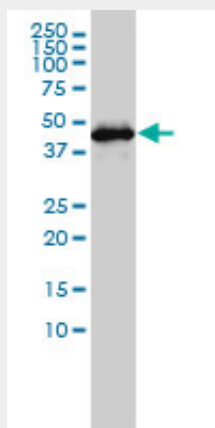
### GSDMDC1 Antibody (monoclonal) (M01) - Images



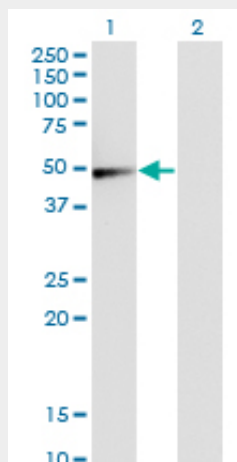
Immunofluorescence of monoclonal antibody to GSDMDC1 on HeLa cell. [antibody concentration 10 ug/ml]



Antibody Reactive Against Recombinant Protein. Western Blot detection against Immunogen (78.98 KDa) .

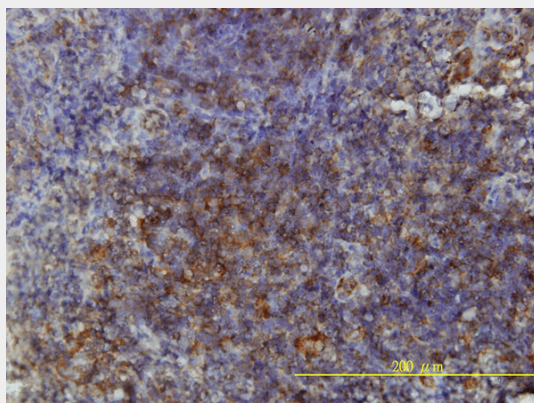


GSDMDC1 monoclonal antibody (M01), clone 3F12-1B2 Western Blot analysis of GSDMDC1 expression in Jurkat (Cat # AT2269a)

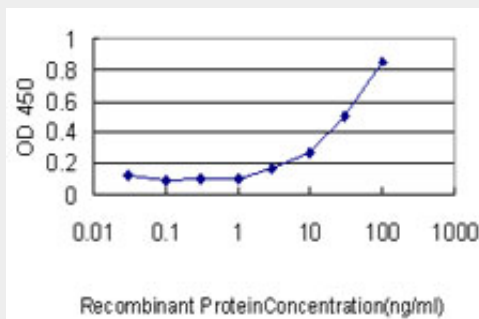


Western Blot analysis of GSDMD expression in transfected 293T cell line by GSDMDC1 monoclonal antibody (M01), clone 3F12-1B2.

Lane 1: GSDMD transfected lysate (Predicted MW: 52.8 kDa).  
Lane 2: Non-transfected lysate.



Immunoperoxidase of monoclonal antibody to GSDMDC1 on formalin-fixed paraffin-embedded human tonsil tissue. [antibody concentration 3 ug/ml]



Detection limit for recombinant GST tagged GSDMDC1 is approximately 0.3ng/ml as a capture antibody.

### **GSDMDC1 Antibody (monoclonal) (M01) - Background**

Gasdermin D is a member of the gasdermin family. Members of this family appear to play a role in

regulation of epithelial proliferation. Gasdermin D has been suggested to act as a tumor suppressor. Alternatively spliced transcript variants have been described.

#### **GSDMDC1 Antibody (monoclonal) (M01) - References**

Distinctive expression and function of four GSDM family genes (GSDMA-D) in normal and malignant upper gastrointestinal epithelium. Saeki N, et al. Genes Chromosomes Cancer, 2009 Mar. PMID 19051310. Members of a novel gene family, Gsdm, are expressed exclusively in the epithelium of the skin and gastrointestinal tract in a highly tissue-specific manner. Tamura M, et al. Genomics, 2007 May. PMID 17350798. DNA sequence and analysis of human chromosome 8. Nusbaum C, et al. Nature, 2006 Jan 19. PMID 16421571. Immunoaffinity profiling of tyrosine phosphorylation in cancer cells. Rush J, et al. Nat Biotechnol, 2005 Jan. PMID 15592455. The status, quality, and expansion of the NIH full-length cDNA project: the Mammalian Gene Collection (MGC). Gerhard DS, et al. Genome Res, 2004 Oct. PMID 15489334.

#### **GSDMDC1 Antibody (monoclonal) (M01) - Citations**

- [Overexpression of gasdermin D promotes invasion of adenoid cystic carcinoma](#)