

GSR Antibody (monoclonal) (M01)**Mouse monoclonal antibody raised against a partial recombinant GSR.****Catalog # AT2273a****Specification**

GSR Antibody (monoclonal) (M01) - Product Information

Application	WB, IHC, E
Primary Accession	P00390
Other Accession	NM_000637
Reactivity	Human
Host	mouse
Clonality	Monoclonal
Isotype	IgG2a Kappa
Calculated MW	56257

GSR Antibody (monoclonal) (M01) - Additional Information**Gene ID** 2936**Other Names**

Glutathione reductase, mitochondrial, GR, GRase, GSR, GLUR, GRD1

Target/Specificity

GSR (NP_000628, 413 a.a. ~ 522 a.a) partial recombinant protein with GST tag. MW of the GST tag alone is 26 KDa.

Dilution

WB~~1:500~1000

IHC~~1:100~500

E~~N/A

Format

Clear, colorless solution in phosphate buffered saline, pH 7.2 .

Storage

Store at -20°C or lower. Aliquot to avoid repeated freezing and thawing.

Precautions

GSR Antibody (monoclonal) (M01) is for research use only and not for use in diagnostic or therapeutic procedures.

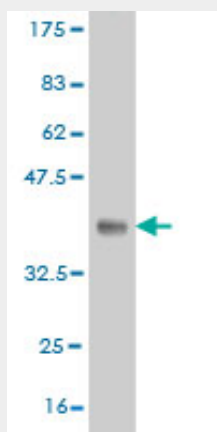
GSR Antibody (monoclonal) (M01) - Protocols

Provided below are standard protocols that you may find useful for product applications.

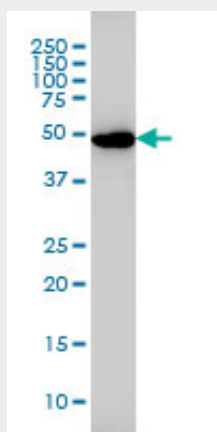
- [Western Blot](#)
- [Blocking Peptides](#)

- [Dot Blot](#)
- [Immunohistochemistry](#)
- [Immunofluorescence](#)
- [Immunoprecipitation](#)
- [Flow Cytometry](#)
- [Cell Culture](#)

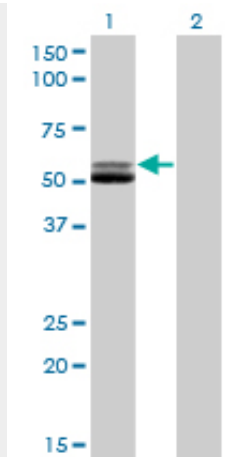
GSR Antibody (monoclonal) (M01) - Images



Antibody Reactive Against Recombinant Protein. Western Blot detection against Immunogen (37.84 kDa) .



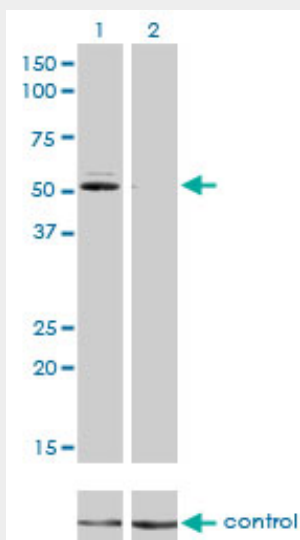
GSR monoclonal antibody (M01), clone 6B4 Western Blot analysis of GSR expression in IMR-32 (Cat # AT2273a)



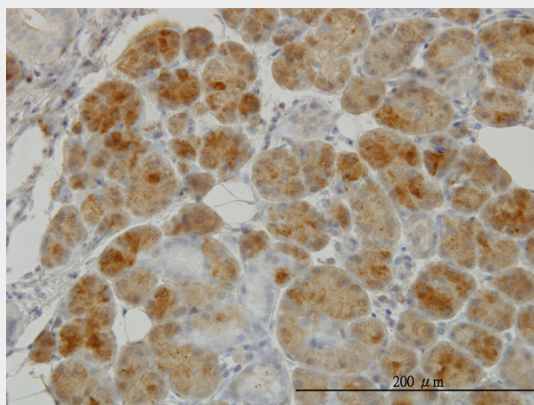
Western Blot analysis of GSR expression in transfected 293T cell line by GSR monoclonal antibody (M01), clone 6B4.

Lane 1: GSR transfected lysate(56.3 KDa).

Lane 2: Non-transfected lysate.

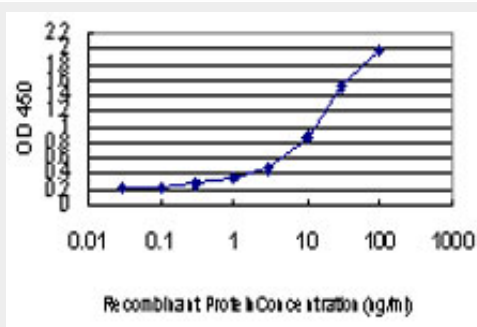


Western blot analysis of GSR over-expressed 293 cell line, cotransfected with GSR Validated Chimera RNAi (Cat # AT2273a)



Immunoperoxidase of monoclonal antibody to GSR on formalin-fixed paraffin-embedded human

salivary gland. [antibody concentration 6 ug/ml]



Detection limit for recombinant GST tagged GSR is approximately 0.03ng/ml as a capture antibody.

GSR Antibody (monoclonal) (M01) - Background

This gene encodes a member of the class-I pyridine nucleotide-disulfide oxidoreductase family. This enzyme is a homodimeric flavoprotein. It is a central enzyme of cellular antioxidant defense, and reduces oxidized glutathione disulfide (GSSG) to the sulfhydryl form GSH, which is an important cellular antioxidant. Rare mutations in this gene result in hereditary glutathione reductase deficiency. Multiple alternatively spliced transcript variants encoding different isoforms have been found.

GSR Antibody (monoclonal) (M01) - References

Variation at the NFATC2 Locus Increases the Risk of Thiazolinedione-Induced Edema in the Diabetes REduction Assessment with ramipril and rosiglitazone Medication (DREAM) Study. Bailey SD, et al. Diabetes Care, 2010 Jul 13. PMID 20628086. Common polymorphisms in ITGA2, PON1 and THBS2 are associated with coronary atherosclerosis in a candidate gene association study of the Chinese Han population. Wang Y, et al. J Hum Genet, 2010 Aug. PMID 20485444. Personalized smoking cessation: interactions between nicotine dose, dependence and quit-success genotype score. Rose JE, et al. Mol Med, 2010 Jul-Aug. PMID 20379614. Glutathione pathway genetic polymorphisms and lung cancer survival after platinum-based chemotherapy. Moyer AM, et al. Cancer Epidemiol Biomarkers Prev, 2010 Mar. PMID 20200426. Gene-centric association signals for lipids and apolipoproteins identified via the HumanCVD BeadChip. Talmud PJ, et al. Am J Hum Genet, 2009 Nov. PMID 19913121.