

**GSTP1 Antibody (monoclonal) (M01)****Mouse monoclonal antibody raised against a full length recombinant GSTP1.****Catalog # AT2283a****Specification**

---

**GSTP1 Antibody (monoclonal) (M01) - Product Information**

Application	WB, IF, IP
Primary Accession	<a href="#">P09211</a>
Other Accession	<a href="#">BC010915</a>
Reactivity	Human
Host	mouse
Clonality	Monoclonal
Isotype	IgG1 kappa
Calculated MW	23356

**GSTP1 Antibody (monoclonal) (M01) - Additional Information****Gene ID** 2950**Other Names**

Glutathione S-transferase P, GST class-pi, GSTP1-1, GSTP1, FAES3, GST3

**Target/Specificity**

GSTP1 (AAH10915, 1 a.a. ~ 210 a.a) full-length recombinant protein with GST tag. MW of the GST tag alone is 26 KDa.

**Dilution**

WB~~1:500~1000

IF~~1:50~200

IP~~N/A

**Format**

Clear, colorless solution in phosphate buffered saline, pH 7.2 .

**Storage**

Store at -20°C or lower. Aliquot to avoid repeated freezing and thawing.

**Precautions**

GSTP1 Antibody (monoclonal) (M01) is for research use only and not for use in diagnostic or therapeutic procedures.

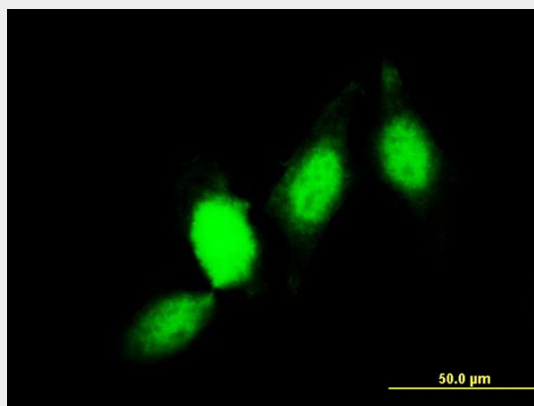
**GSTP1 Antibody (monoclonal) (M01) - Protocols**

Provided below are standard protocols that you may find useful for product applications.

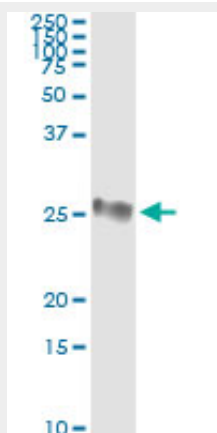
- [Western Blot](#)
- [Blocking Peptides](#)

- [Dot Blot](#)
- [Immunohistochemistry](#)
- [Immunofluorescence](#)
- [Immunoprecipitation](#)
- [Flow Cytometry](#)
- [Cell Culture](#)

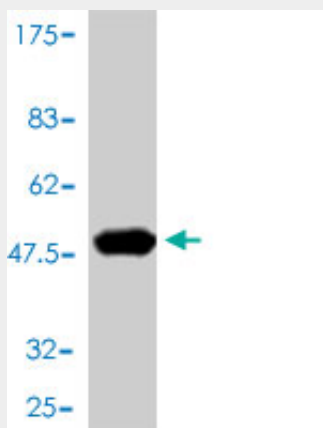
### GSTP1 Antibody (monoclonal) (M01) - Images



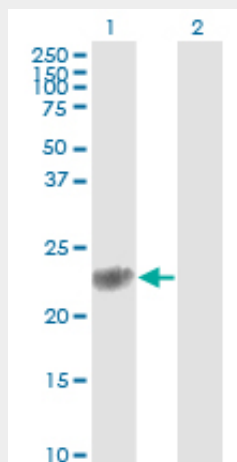
Immunofluorescence of monoclonal antibody to GSTP1 on HeLa cell. [antibody concentration 10 ug/ml]



Immunoprecipitation of GSTP1 transfected lysate using anti-GSTP1 monoclonal antibody and Protein A Magnetic Bead ([U00007](#)), and immunoblotted with GSTP1 MaxPab rabbit polyclonal antibody.



Antibody Reactive Against Recombinant Protein. Western Blot detection against Immunogen (48.84 KDa) .



Western Blot analysis of GSTP1 expression in transfected 293T cell line by GSTP1 monoclonal antibody (M01), clone 2G6-F6.

Lane 1: GSTP1 transfected lysate (Predicted MW: 23.3 KDa).

Lane 2: Non-transfected lysate.

#### **GSTP1 Antibody (monoclonal) (M01) - Background**

Glutathione S-transferases (GSTs) are a family of enzymes that play an important role in detoxification by catalyzing the conjugation of many hydrophobic and electrophilic compounds with reduced glutathione. Based on their biochemical, immunologic, and structural properties, the soluble GSTs are categorized into 4 main classes: alpha, mu, pi, and theta. This GST family member is a polymorphic gene encoding active, functionally different GSTP1 variant proteins that are thought to function in xenobiotic metabolism and play a role in susceptibility to cancer, and other diseases.

#### **GSTP1 Antibody (monoclonal) (M01) - References**

1. Endothelial cell dysfunction and cytoskeletal changes associated with repression of p16(INK4a) during immortalization. Kan CY, Wen VW, Pasquier E, Jankowski K, Chang M, Richards LA, Kavallaris M, Mackenzie KL. *Oncogene*. 2012 Feb 6. doi: 10.1038/onc.2011.645. [Epub ahead of print]