

HAND2 Antibody (monoclonal) (M06)**Mouse monoclonal antibody raised against a partial recombinant HAND2.****Catalog # AT2315a****Specification**

HAND2 Antibody (monoclonal) (M06) - Product Information

| | |
|-------------------|---------------------------|
| Application | WB |
| Primary Accession | P61296 |
| Other Accession | NM_021973 |
| Reactivity | Human |
| Host | mouse |
| Clonality | Monoclonal |
| Isotype | IgG2a Kappa |
| Calculated MW | 23666 |

HAND2 Antibody (monoclonal) (M06) - Additional Information**Gene ID** 9464**Other Names**

Heart- and neural crest derivatives-expressed protein 2, Class A basic helix-loop-helix protein 26, bHLHa26, Deciduum, heart, autonomic nervous system and neural crest derivatives-expressed protein 2, dHAND, HAND2, BHLHA26, DHAND

Target/Specificity

HAND2 (NP_068808.1, 135 a.a. ~ 216 a.a) partial recombinant protein with GST tag. MW of the GST tag alone is 26 KDa.

Dilution

WB~~1:500~1000

Format

Clear, colorless solution in phosphate buffered saline, pH 7.2 .

Storage

Store at -20°C or lower. Aliquot to avoid repeated freezing and thawing.

Precautions

HAND2 Antibody (monoclonal) (M06) is for research use only and not for use in diagnostic or therapeutic procedures.

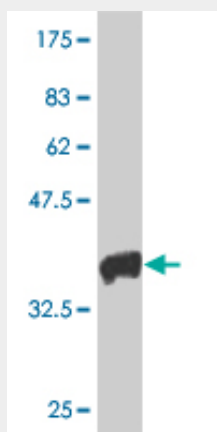
HAND2 Antibody (monoclonal) (M06) - Protocols

Provided below are standard protocols that you may find useful for product applications.

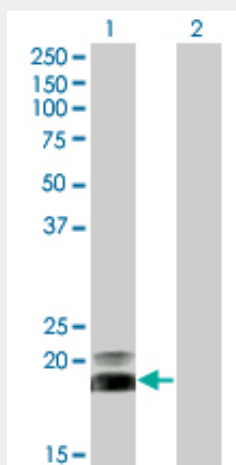
- [Western Blot](#)
- [Blocking Peptides](#)

- [Dot Blot](#)
- [Immunohistochemistry](#)
- [Immunofluorescence](#)
- [Immunoprecipitation](#)
- [Flow Cytometry](#)
- [Cell Culture](#)

HAND2 Antibody (monoclonal) (M06) - Images

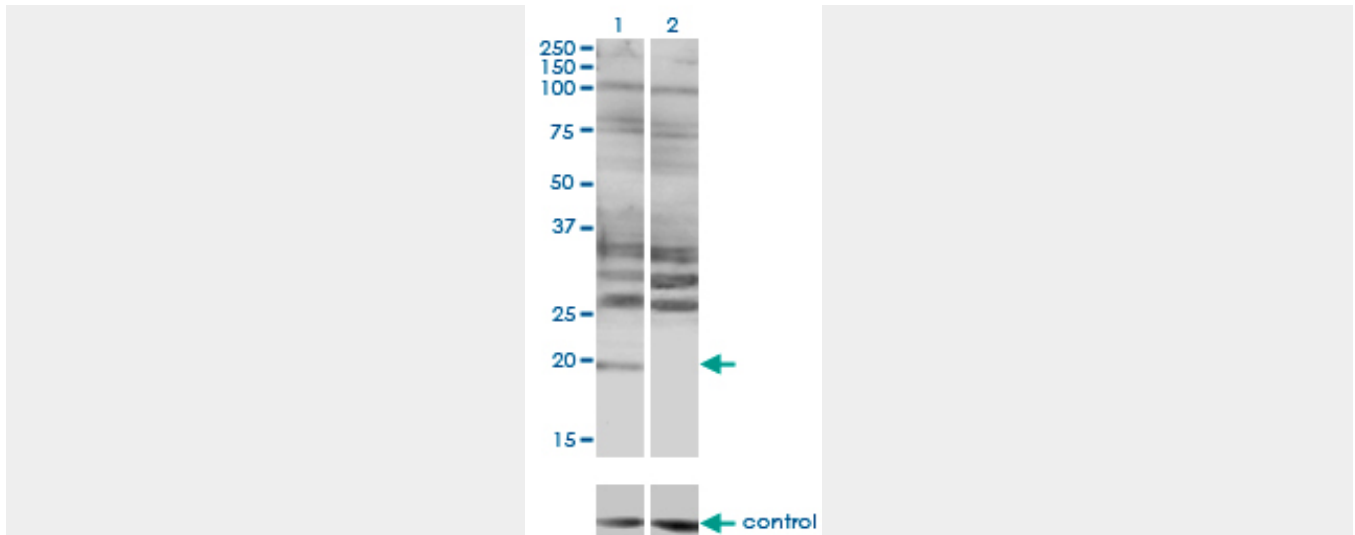


Antibody Reactive Against Recombinant Protein. Western Blot detection against Immunogen (34.76 kDa) .



Western Blot analysis of HAND2 expression in transfected 293T cell line by HAND2 monoclonal antibody (M06), clone 3D5.

Lane 1: HAND2 transfected lysate(21.6 kDa).
Lane 2: Non-transfected lysate.



Western blot analysis of HAND2 over-expressed 293 cell line, cotransfected with HAND2 Validated Chimera RNAi (Cat # AT2315a)

HAND2 Antibody (monoclonal) (M06) - Background

The protein encoded by this gene belongs to the basic helix-loop-helix family of transcription factors. This gene product is one of two closely related family members, the HAND proteins, which are asymmetrically expressed in the developing ventricular chambers and play an essential role in cardiac morphogenesis. Working in a complementary fashion, they function in the formation of the right ventricle and aortic arch arteries, implicating them as mediators of congenital heart disease. In addition, this transcription factor plays an important role in limb and branchial arch development.

HAND2 Antibody (monoclonal) (M06) - References

1. Progesterin-induced heart and neural crest derivatives expressed transcript 2 is associated with fibulin-1 expression in human endometrial stromal cells. Cho H, Okada H, Tsuzuki T, Nishigaki A, Yasuda K, Kanzaki H. Fertil Steril. 2012 Oct 1. pii: S0015-0282(12)02175-9. doi: 10.1016/j.fertnstert.2012.08.056.