

HLA-DMA Antibody (monoclonal) (M01)

Mouse monoclonal antibody raised against a full length recombinant HLA-DMA.

Catalog # AT2375a

Specification

HLA-DMA Antibody (monoclonal) (M01) - Product Information

Application	WB, IHC, E
Primary Accession	P28067
Other Accession	BC011447
Reactivity	Human
Host	mouse
Clonality	Monoclonal
Isotype	IgG1 kappa
Calculated MW	29207

HLA-DMA Antibody (monoclonal) (M01) - Additional Information

Gene ID 3108

Other Names

HLA class II histocompatibility antigen, DM alpha chain, MHC class II antigen DMA, Really interesting new gene 6 protein, HLA-DMA, DMA, RING6

Target/Specificity

HLA-DMA (AAH11447, 1 a.a. ~ 261 a.a) full-length recombinant protein with GST tag. MW of the GST tag alone is 26 KDa.

Dilution

WB~~1:500~1000

IHC~~1:100~500

E~~N/A

Format

Clear, colorless solution in phosphate buffered saline, pH 7.2 .

Storage

Store at -20°C or lower. Aliquot to avoid repeated freezing and thawing.

Precautions

HLA-DMA Antibody (monoclonal) (M01) is for research use only and not for use in diagnostic or therapeutic procedures.

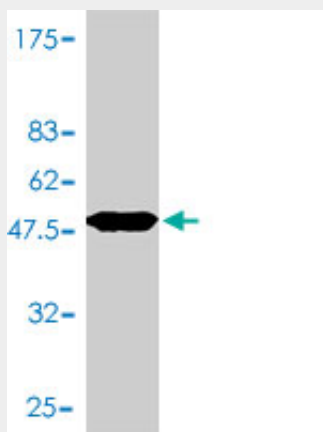
HLA-DMA Antibody (monoclonal) (M01) - Protocols

Provided below are standard protocols that you may find useful for product applications.

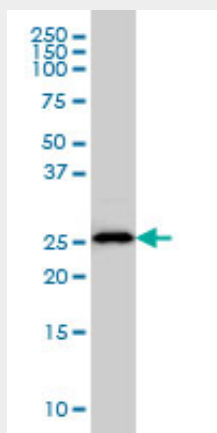
- [Western Blot](#)

- [Blocking Peptides](#)
- [Dot Blot](#)
- [Immunohistochemistry](#)
- [Immunofluorescence](#)
- [Immunoprecipitation](#)
- [Flow Cytometry](#)
- [Cell Culture](#)

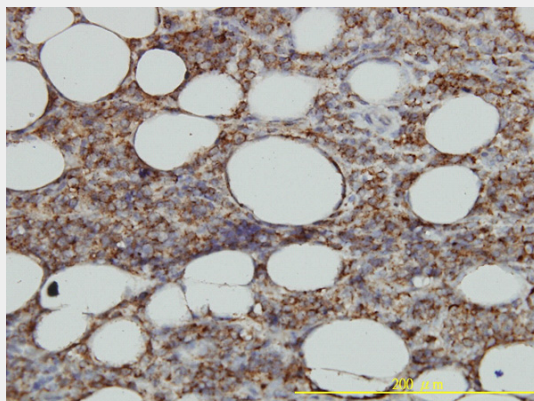
HLA-DMA Antibody (monoclonal) (M01) - Images



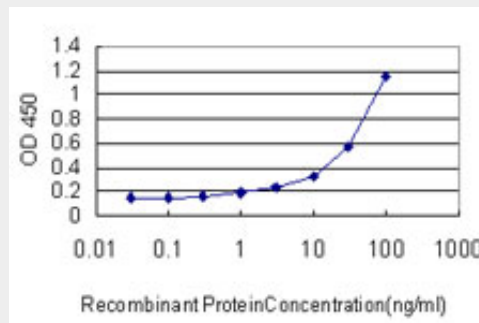
Antibody Reactive Against Recombinant Protein. Western Blot detection against Immunogen (54.45 KDa) .



HLA-DMA monoclonal antibody (M01), clone 3F12-F11 Western Blot analysis of HLA-DMA expression in U-2 OS (Cat # AT2375a)



Immunoperoxidase of monoclonal antibody to HLA-DMA on formalin-fixed paraffin-embedded human malignant lymphoma, diffuse large B tissue. [antibody concentration 3 ug/ml]



Detection limit for recombinant GST tagged HLA-DMA is approximately 1ng/ml as a capture antibody.

HLA-DMA Antibody (monoclonal) (M01) - Background

HLA-DMA belongs to the HLA class II alpha chain paralogues. This class II molecule is a heterodimer consisting of an alpha (DMA) and a beta chain (DMB), both anchored in the membrane. It is located in intracellular vesicles. DM plays a central role in the peptide loading of MHC class II molecules by helping to release the CLIP molecule from the peptide binding site. Class II molecules are expressed in antigen presenting cells (APC: B lymphocytes, dendritic cells, macrophages). The alpha chain is approximately 33-35 kDa and its gene contains 5 exons. Exon one encodes the leader peptide, exons 2 and 3 encode the two extracellular domains, exon 4 encodes the transmembrane domain and the cytoplasmic tail.

HLA-DMA Antibody (monoclonal) (M01) - References

Variation at the NFATC2 Locus Increases the Risk of Thiazolidinedione-Induced Edema in the Diabetes REduction Assessment with ramipril and rosiglitazone Medication (DREAM) Study. Bailey SD, et al. Diabetes Care, 2010 Jul 13. PMID 20628086. DM influences the abundance of major histocompatibility complex class II alleles with low affinity for class II-associated invariant chain peptides via multiple mechanisms. Rinderknecht CH, et al. Immunology, 2010 Sep. PMID 20408893. New genetic associations detected in a host response study to hepatitis B vaccine. Davila S, et al. Genes Immun, 2010 Apr. PMID 20237496. Gene-centric association signals for lipids and apolipoproteins identified via the HumanCVD BeadChip. Talmud PJ, et al. Am J Hum Genet, 2009 Nov. PMID 19913121. High-density SNP screening of the major histocompatibility complex in systemic lupus erythematosus demonstrates strong evidence for independent susceptibility regions. Barcellos LF, et al. PLoS Genet, 2009 Oct. PMID 19851445.