

HMOX2 Antibody (monoclonal) (M01)**Mouse monoclonal antibody raised against a full length recombinant HMOX2.****Catalog # AT2390a****Specification**

HMOX2 Antibody (monoclonal) (M01) - Product Information

Application	WB, IF, E
Primary Accession	P30519
Other Accession	BC002396
Reactivity	Human
Host	mouse
Clonality	Monoclonal
Isotype	IgG1 kappa
Calculated MW	36033

HMOX2 Antibody (monoclonal) (M01) - Additional Information**Gene ID** 3163**Other Names**

Heme oxygenase 2, HO-2, HMOX2, HO2

Target/Specificity

HMOX2 (AAH02396, 1 a.a. ~ 316 a.a) full-length recombinant protein with GST tag. MW of the GST tag alone is 26 KDa.

Dilution

WB~~1:500~1000

IF~~1:50~200

E~~N/A

Format

Clear, colorless solution in phosphate buffered saline, pH 7.2 .

Storage

Store at -20°C or lower. Aliquot to avoid repeated freezing and thawing.

Precautions

HMOX2 Antibody (monoclonal) (M01) is for research use only and not for use in diagnostic or therapeutic procedures.

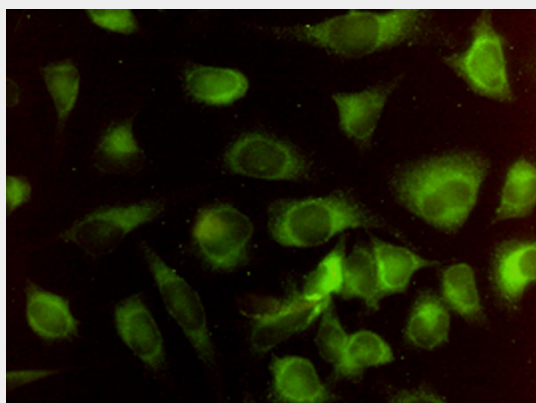
HMOX2 Antibody (monoclonal) (M01) - Protocols

Provided below are standard protocols that you may find useful for product applications.

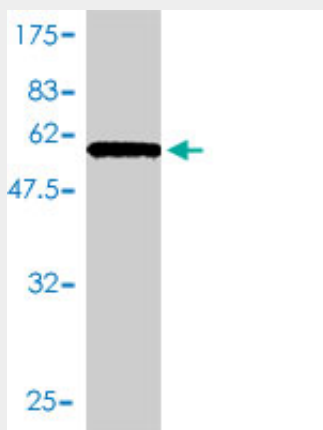
- [Western Blot](#)
- [Blocking Peptides](#)

- [Dot Blot](#)
- [Immunohistochemistry](#)
- [Immunofluorescence](#)
- [Immunoprecipitation](#)
- [Flow Cytometry](#)
- [Cell Culture](#)

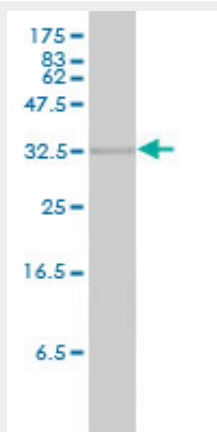
HMOX2 Antibody (monoclonal) (M01) - Images



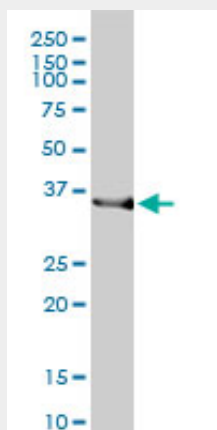
Immunofluorescence of monoclonal antibody to HMOX2 on HeLa cell. [antibody concentration ~ 10 ug/ml]



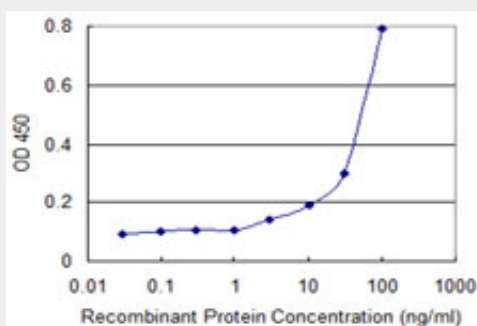
Antibody Reactive Against Recombinant Protein. Western Blot detection against Immunogen (60.5 kDa) .



HMOX2 monoclonal antibody (M01), clone 1D8-1A8. Western Blot analysis of HMOX2 expression in human spleen.



HMOX2 monoclonal antibody (M01), clone 1D8-1A8 Western Blot analysis of HMOX2 expression in HepG2 (Cat # AT2390a)



Detection limit for recombinant GST tagged HMOX2 is 1 ng/ml as a capture antibody.

HMOX2 Antibody (monoclonal) (M01) - Background

Heme oxygenase, an essential enzyme in heme catabolism, cleaves heme to form biliverdin, which is subsequently converted to bilirubin by biliverdin reductase, and carbon monoxide, a putative neurotransmitter. Heme oxygenase activity is induced by its substrate heme and by various nonheme substances. Heme oxygenase occurs as 2 isozymes, an inducible heme oxygenase-1 and a constitutive heme oxygenase-2. HMOX1 and HMOX2 belong to the heme oxygenase family. Alternative splice variants encoding the same protein have been identified at this locus.

HMOX2 Antibody (monoclonal) (M01) - References

Common polymorphisms in ITGA2, PON1 and THBS2 are associated with coronary atherosclerosis in a candidate gene association study of the Chinese Han population. Wang Y, et al. J Hum Genet, 2010 Aug. PMID 20485444. Enhanced translation of heme oxygenase-2 preserves human endothelial cell viability during hypoxia. He JZ, et al. J Biol Chem, 2010 Mar 26. PMID 20118244. Association of an intronic variant of the heme oxygenase-1 gene with hypertension in northern Chinese Han population. Yun L, et al. Clin Exp Hypertens, 2009 Oct. PMID 19886851. A role for Bach1 and HO-2 in suppression of basal and UVA-induced HO-1 expression in human keratinocytes. Zhong JL, et al. Free Radic Biol Med, 2010 Jan 15. PMID 19874887. Defining the human deubiquitinating enzyme interaction landscape. Sowa ME, et al. Cell, 2009 Jul 23. PMID 19615732.