

**HOXC10 Antibody (monoclonal) (M01)****Mouse monoclonal antibody raised against a partial recombinant HOXC10.****Catalog # AT2416a****Specification**

---

**HOXC10 Antibody (monoclonal) (M01) - Product Information**

Application	WB, IF, E
Primary Accession	<a href="#">O9NYD6</a>
Other Accession	<a href="#">BC001293</a>
Reactivity	Human
Host	mouse
Clonality	Monoclonal
Isotype	IgG2a Kappa
Calculated MW	38073

**HOXC10 Antibody (monoclonal) (M01) - Additional Information****Gene ID** 3226**Other Names**

Homeobox protein Hox-C10, Homeobox protein Hox-3l, HOXC10, HOX3l

**Target/Specificity**

HOXC10 (AAH01293, 158 a.a. ~ 257 a.a) partial recombinant protein with GST tag. MW of the GST tag alone is 26 KDa.

**Dilution**

WB~~1:500~1000

IF~~1:50~200

E~~N/A

**Format**

Clear, colorless solution in phosphate buffered saline, pH 7.2 .

**Storage**

Store at -20°C or lower. Aliquot to avoid repeated freezing and thawing.

**Precautions**

HOXC10 Antibody (monoclonal) (M01) is for research use only and not for use in diagnostic or therapeutic procedures.

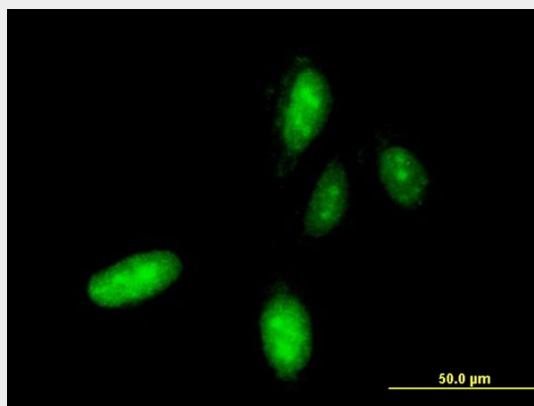
**HOXC10 Antibody (monoclonal) (M01) - Protocols**

Provided below are standard protocols that you may find useful for product applications.

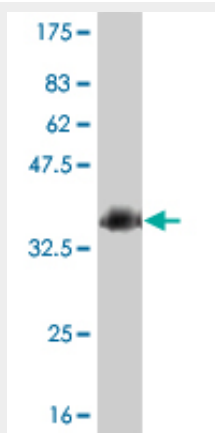
- [Western Blot](#)
- [Blocking Peptides](#)

- [Dot Blot](#)
- [Immunohistochemistry](#)
- [Immunofluorescence](#)
- [Immunoprecipitation](#)
- [Flow Cytometry](#)
- [Cell Culture](#)

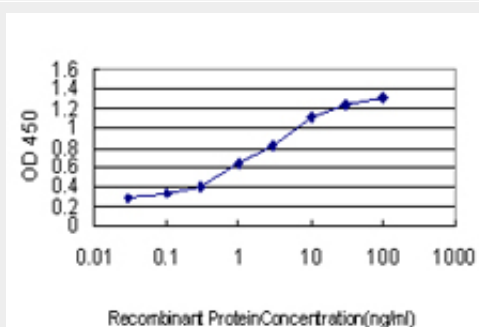
## HOXC10 Antibody (monoclonal) (M01) - Images



Immunofluorescence of monoclonal antibody to HOXC10 on HeLa cell . [antibody concentration 10 ug/ml]



Antibody Reactive Against Recombinant Protein. Western Blot detection against Immunogen (36.63 KDa) .



Detection limit for recombinant GST tagged HOXC10 is approximately 0.03ng/ml as a capture antibody.

## HOXC10 Antibody (monoclonal) (M01) - Background

This gene belongs to the homeobox family of genes. The homeobox genes encode a highly conserved family of transcription factors that play an important role in morphogenesis in all multicellular organisms. Mammals possess four similar homeobox gene clusters, HOXA, HOXB, HOXC and HOXD, which are located on different chromosomes and consist of 9 to 11 genes arranged in tandem. This gene is one of several homeobox HOXC genes located in a cluster on chromosome 12. The protein level is controlled during cell differentiation and proliferation, which may indicate this protein has a role in origin activation.

#### **HOXC10 Antibody (monoclonal) (M01) - References**

HOXC10 as a potential marker for discriminating between amnion- and decidua-derived mesenchymal stem cells. Hwang JH, et al. Cloning Stem Cells, 2009 Jun. PMID 19522674. Gene expression analysis of preinvasive and invasive cervical squamous cell carcinomas identifies HOXC10 as a key mediator of invasion. Zhai Y, et al. Cancer Res, 2007 Nov 1. PMID 17974957. Dynamic profiling of the post-translational modifications and interaction partners of epidermal growth factor receptor signaling after stimulation by epidermal growth factor using Extended Range Proteomic Analysis (ERPA). Wu SL, et al. Mol Cell Proteomics, 2006 Sep. PMID 16799092. The status, quality, and expansion of the NIH full-length cDNA project: the Mammalian Gene Collection (MGC). Gerhard DS, et al. Genome Res, 2004 Oct. PMID 15489334. Early mitotic degradation of the homeoprotein HOXC10 is potentially linked to cell cycle progression. Gabellini D, et al. EMBO J, 2003 Jul 15. PMID 12853486.