

**HPCAL4 Antibody (monoclonal) (M01)****Mouse monoclonal antibody raised against a full length recombinant HPCAL4.****Catalog # AT2432a****Specification**

---

**HPCAL4 Antibody (monoclonal) (M01) - Product Information**

Application	WB, E
Primary Accession	<a href="#">O9UM19</a>
Other Accession	<a href="#">BC030827</a>
Reactivity	Human
Host	Mouse
Clonality	Monoclonal
Isotype	IgG2a kappa
Calculated MW	22202

**HPCAL4 Antibody (monoclonal) (M01) - Additional Information****Gene ID** 51440**Other Names**

Hippocalcin-like protein 4, HLP4, HPCAL4

**Target/Specificity**

HPCAL4 (AAH30827, 1 a.a. ~ 191 a.a) full-length recombinant protein with GST tag. MW of the GST tag alone is 26 KDa.

**Dilution**

WB~~1:500~1000

E~~N/A

**Format**

Clear, colorless solution in phosphate buffered saline, pH 7.2 .

**Storage**

Store at -20°C or lower. Aliquot to avoid repeated freezing and thawing.

**Precautions**

HPCAL4 Antibody (monoclonal) (M01) is for research use only and not for use in diagnostic or therapeutic procedures.

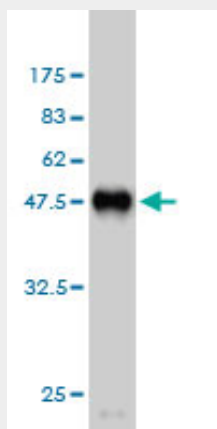
**HPCAL4 Antibody (monoclonal) (M01) - Protocols**

Provided below are standard protocols that you may find useful for product applications.

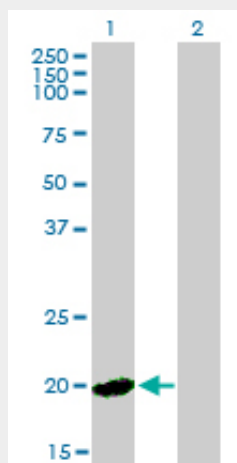
- [Western Blot](#)
- [Blocking Peptides](#)
- [Dot Blot](#)

- [Immunohistochemistry](#)
- [Immunofluorescence](#)
- [Immunoprecipitation](#)
- [Flow Cytometry](#)
- [Cell Culture](#)

#### HPCAL4 Antibody (monoclonal) (M01) - Images



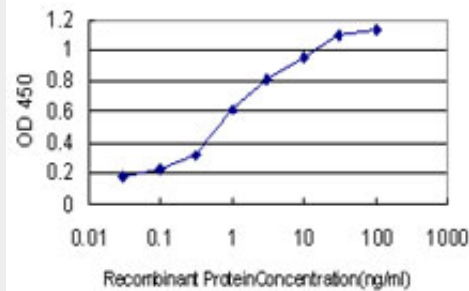
Antibody Reactive Against Recombinant Protein. Western Blot detection against Immunogen (46.75 kDa) .



Western Blot analysis of HPCAL4 expression in transfected 293T cell line by HPCAL4 monoclonal antibody (M01), clone 2B11.

Lane 1: HPCAL4 transfected lysate(22.2 kDa).

Lane 2: Non-transfected lysate.



Detection limit for recombinant GST tagged HPCAL4 is approximately 0.1ng/ml as a capture antibody.

#### **HPCAL4 Antibody (monoclonal) (M01) - Background**

The protein encoded by this gene is highly similar to human hippocalcin protein and hippocalcin like-1 protein. It also has similarity to rat neural visinin-like Ca<sup>2+</sup>-binding protein-type 1 and 2 proteins. This encoded protein may be involved in the calcium-dependent regulation of rhodopsin phosphorylation. The transcript of this gene has multiple polyadenylation sites. [provided by RefSeq]