

HPX Antibody (monoclonal) (M01)

Mouse monoclonal antibody raised against a full length recombinant HPX.

Catalog # AT2435a

Specification

HPX Antibody (monoclonal) (M01) - Product Information

Application	WB, IP, E
Primary Accession	P02790
Other Accession	BC005395
Reactivity	Human
Host	mouse
Clonality	Monoclonal
Isotype	IgG2b Kappa
Calculated MW	51676

HPX Antibody (monoclonal) (M01) - Additional Information

Gene ID 3263

Other Names

Hemopexin, Beta-1B-glycoprotein, HPX

Target/Specificity

HPX (AAH05395, 1 a.a. ~ 254 a.a) full-length recombinant protein with GST tag. MW of the GST tag alone is 26 KDa.

Dilution

WB~~1:500~1000

IP~~N/A

E~~N/A

Format

Clear, colorless solution in phosphate buffered saline, pH 7.2 .

Storage

Store at -20°C or lower. Aliquot to avoid repeated freezing and thawing.

Precautions

HPX Antibody (monoclonal) (M01) is for research use only and not for use in diagnostic or therapeutic procedures.

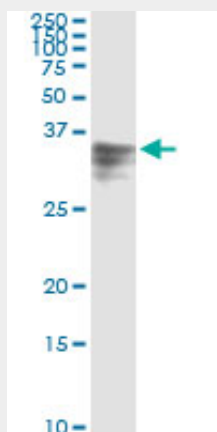
HPX Antibody (monoclonal) (M01) - Protocols

Provided below are standard protocols that you may find useful for product applications.

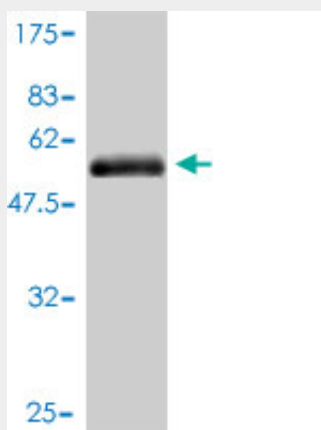
- [Western Blot](#)
- [Blocking Peptides](#)

- [Dot Blot](#)
- [Immunohistochemistry](#)
- [Immunofluorescence](#)
- [Immunoprecipitation](#)
- [Flow Cytometry](#)
- [Cell Culture](#)

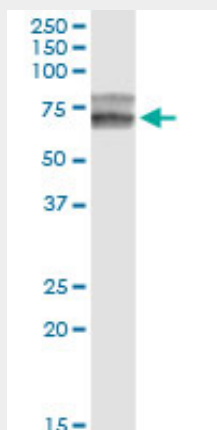
HPX Antibody (monoclonal) (M01) - Images



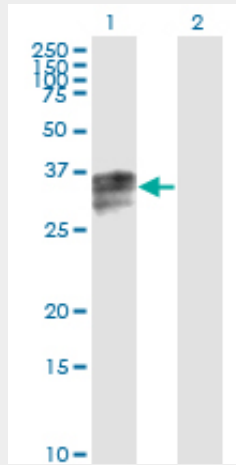
Immunoprecipitation of HPX transfected lysate using anti-HPX monoclonal antibody and Protein A Magnetic Bead ([U0007](#)), and immunoblotted with HPX MaxPab rabbit polyclonal antibody.



Antibody Reactive Against Recombinant Protein. Western Blot detection against Immunogen (53.68 KDa) .

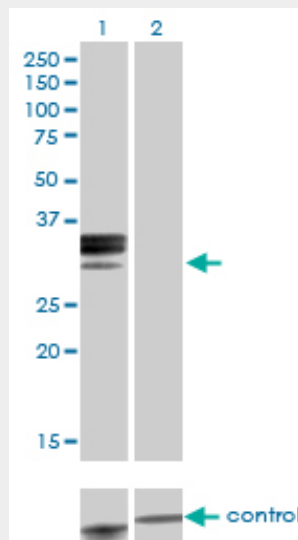


HPX monoclonal antibody (M01), clone 3A9-1A9. Western Blot analysis of HPX expression in human liver.

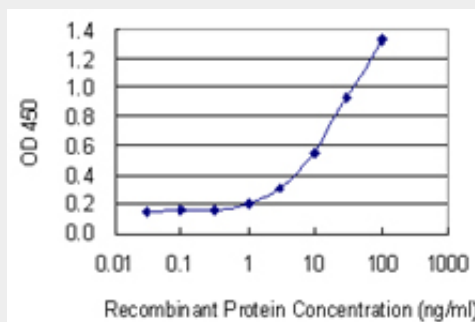


Western Blot analysis of HPX expression in transfected 293T cell line by HPX monoclonal antibody (M01), clone 3A9-1A9.

Lane 1: HPX transfected lysate (Predicted MW: 28.6 KDa).
 Lane 2: Non-transfected lysate.



Western blot analysis of HPX over-expressed 293 cell line, cotransfected with HPX Validated Chimera RNAi ((Cat # AT2435a)



Detection limit for recombinant GST tagged HPX is 0.3 ng/ml as a capture antibody.

HPX Antibody (monoclonal) (M01) - Background

This gene encodes a plasma glycoprotein that binds heme with high affinity. The encoded protein is an acute phase protein that transports heme from the plasma to the liver and may be involved in protecting cells from oxidative stress.

HPX Antibody (monoclonal) (M01) - References

Variation at the NFATC2 Locus Increases the Risk of Thiazolinedione-Induced Edema in the Diabetes REduction Assessment with ramipril and rosiglitazone Medication (DREAM) Study. Bailey SD, et al. Diabetes Care, 2010 Jul 13. PMID 20628086. MMP20 hemopexin domain mutation in amelogenesis imperfecta. Lee SK, et al. J Dent Res, 2010 Jan. PMID 19966041. Gene-centric association signals for lipids and apolipoproteins identified via the HumanCVD BeadChip. Talmud PJ, et al. Am J Hum Genet, 2009 Nov. PMID 19913121. Proteomics-derived cerebrospinal fluid markers of autopsy-confirmed Alzheimer's disease. Roher AE, et al. Biomarkers, 2009 Nov. PMID 19863188. Chromatographically distinguishable heme insertion isoforms of human hemopexin. Mauk MR, et al. Biochemistry, 2007 Dec 25. PMID 18044975.