

**HSPA1B Antibody (monoclonal) (M02)****Mouse monoclonal antibody raised against a partial recombinant HSPA1B.****Catalog # AT2444a****Specification**

---

**HSPA1B Antibody (monoclonal) (M02) - Product Information**

Application	WB, IHC, IF, E
Primary Accession	<a href="#">P08107</a>
Other Accession	<a href="#">NM_005345</a>
Reactivity	Human, Mouse, Rat
Host	mouse
Clonality	Monoclonal
Isotype	IgG2a Kappa

**HSPA1B Antibody (monoclonal) (M02) - Additional Information****Other Names**

Heat shock 70 kDa protein 1A/1B, Heat shock 70 kDa protein 1/2, HSP70-1/HSP70-2, HSP701/HSP702, HSPA1A, HSPA1, HSX70

**Target/Specificity**

HSPA1B (NP\_005336, 531 a.a. ~ 611 a.a) partial recombinant protein with GST tag. MW of the GST tag alone is 26 KDa.

**Dilution**

WB~~1:500~1000

IHC~~1:100~500

IF~~1:50~200

E~~N/A

**Format**

Clear, colorless solution in phosphate buffered saline, pH 7.2 .

**Storage**

Store at -20°C or lower. Aliquot to avoid repeated freezing and thawing.

**Precautions**

HSPA1B Antibody (monoclonal) (M02) is for research use only and not for use in diagnostic or therapeutic procedures.

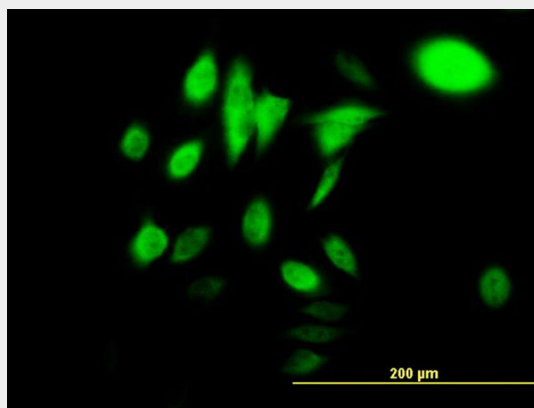
**HSPA1B Antibody (monoclonal) (M02) - Protocols**

Provided below are standard protocols that you may find useful for product applications.

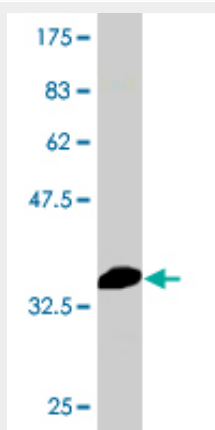
- [Western Blot](#)
- [Blocking Peptides](#)
- [Dot Blot](#)
- [Immunohistochemistry](#)

- [Immunofluorescence](#)
- [Immunoprecipitation](#)
- [Flow Cytometry](#)
- [Cell Culture](#)

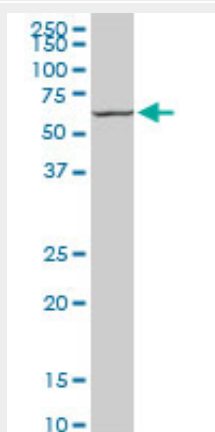
### HSPA1B Antibody (monoclonal) (M02) - Images



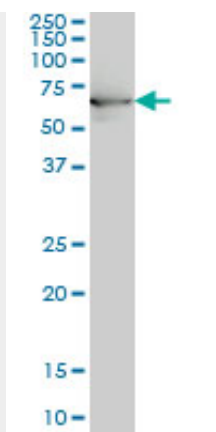
Immunofluorescence of monoclonal antibody to HSPA1B on HeLa cell. [antibody concentration 10 ug/ml]



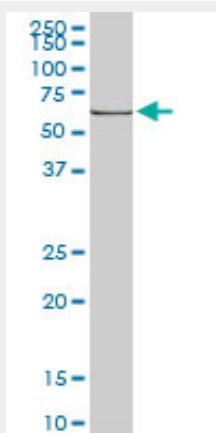
Antibody Reactive Against Recombinant Protein. Western Blot detection against Immunogen (34.65 KDa) .



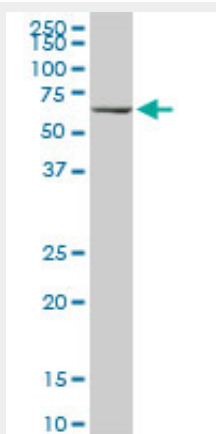
HSPA1B monoclonal antibody (M02), clone 3B7. Western Blot analysis of HSPA1B expression in PC-12 ( (Cat # AT2444a )



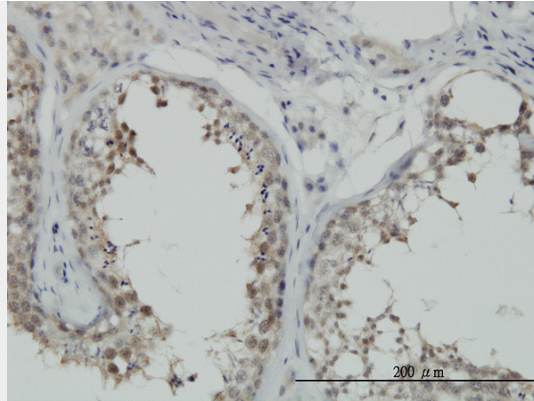
HSPA1B monoclonal antibody (M02), clone 3B7 Western Blot analysis of HSPA1B expression in IMR-32 (Cat # AT2444a)



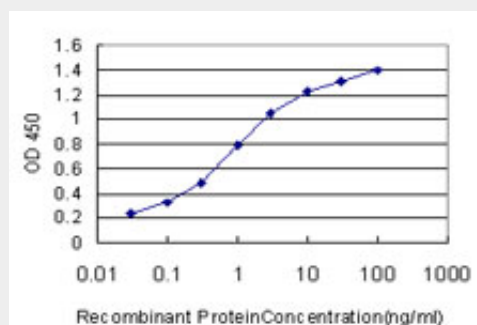
HSPA1B monoclonal antibody (M02), clone 3B7. Western Blot analysis of HSPA1B expression in Raw 264.7 (Cat # AT2444a)



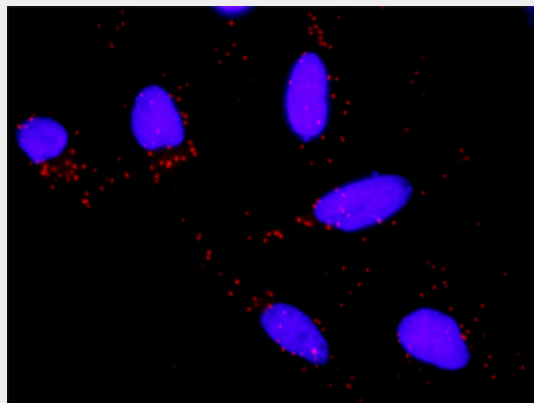
HSPA1B monoclonal antibody (M02), clone 3B7. Western Blot analysis of HSPA1B expression in NIH/3T3 (Cat # AT2444a)



Immunoperoxidase of monoclonal antibody to HSPA1B on formalin-fixed paraffin-embedded human testis. [antibody concentration 6 ug/ml]



Detection limit for recombinant GST tagged HSPA1B is approximately 0.03ng/ml as a capture antibody.



Proximity Ligation Analysis of protein-protein interactions between TP53 and HSPA1B. HeLa cells were stained with anti-TP53 rabbit purified polyclonal 1:1200 and anti-HSPA1B mouse monoclonal antibody 1:50. Each red dot represents the detection of protein-protein interaction complex, and nuclei were counterstained with DAPI (blue).

### **HSPA1B Antibody (monoclonal) (M02) - Background**

This intronless gene encodes a 70kDa heat shock protein which is a member of the heat shock protein 70 family. In conjunction with other heat shock proteins, this protein stabilizes existing proteins against aggregation and mediates the folding of newly translated proteins in the cytosol and in organelles. It is also involved in the ubiquitin-proteasome pathway through interaction with the AU-rich element RNA-binding protein 1. The gene is located in the major histocompatibility complex class III region, in a cluster with two closely related genes which encode similar proteins.

**HSPA1B Antibody (monoclonal) (M02) - References**

1.Functional analysis of beef tenderness.Guillemin N, Bonnet M, Jurie C, Picard B.J Proteomics. 2011 Aug 9. [Epub ahead of print]