

**HSPA1L Antibody (monoclonal) (M02)****Mouse monoclonal antibody raised against a partial recombinant HSPA1L.****Catalog # AT2446a****Specification**

---

**HSPA1L Antibody (monoclonal) (M02) - Product Information**

Application	WB, IHC, E
Primary Accession	<a href="#">P34931</a>
Other Accession	<a href="#">NM_005527</a>
Reactivity	Human, Rat
Host	mouse
Clonality	Monoclonal
Isotype	IgG1 Kappa
Calculated MW	70375

**HSPA1L Antibody (monoclonal) (M02) - Additional Information****Gene ID** 3305**Other Names**

Heat shock 70 kDa protein 1-like, Heat shock 70 kDa protein 1L, Heat shock 70 kDa protein 1-Hom, HSP70-Hom, HSPA1L

**Target/Specificity**

HSPA1L (NP\_005518, 561 a.a. ~ 641 a.a) partial recombinant protein with GST tag. MW of the GST tag alone is 26 KDa.

**Dilution**

WB~~1:500~1000

IHC~~1:100~500

E~~N/A

**Format**

Clear, colorless solution in phosphate buffered saline, pH 7.2 .

**Storage**

Store at -20°C or lower. Aliquot to avoid repeated freezing and thawing.

**Precautions**

HSPA1L Antibody (monoclonal) (M02) is for research use only and not for use in diagnostic or therapeutic procedures.

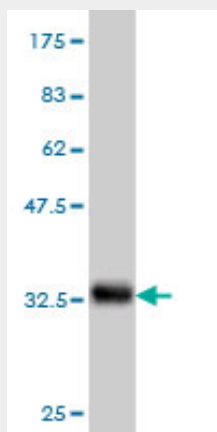
**HSPA1L Antibody (monoclonal) (M02) - Protocols**

Provided below are standard protocols that you may find useful for product applications.

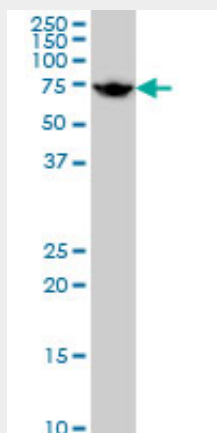
- [Western Blot](#)

- [Blocking Peptides](#)
- [Dot Blot](#)
- [Immunohistochemistry](#)
- [Immunofluorescence](#)
- [Immunoprecipitation](#)
- [Flow Cytometry](#)
- [Cell Culture](#)

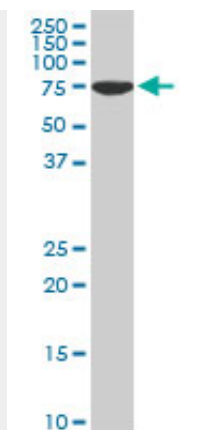
#### HSPA1L Antibody (monoclonal) (M02) - Images



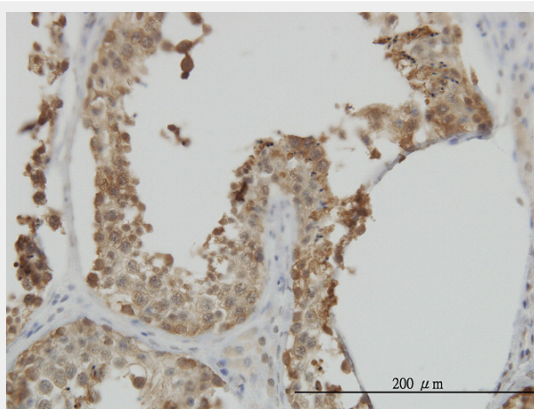
Antibody Reactive Against Recombinant Protein. Western Blot detection against Immunogen (34.65 KDa) .



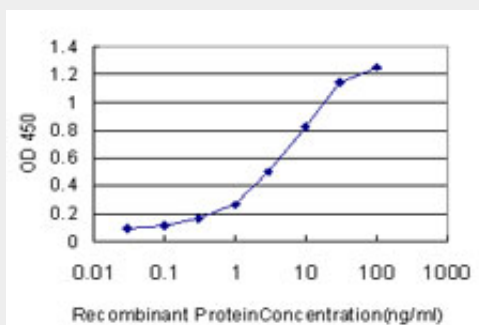
HSPA1L monoclonal antibody (M02), clone 7H6 Western Blot analysis of HSPA1L expression in HeLa ( (Cat # AT2446a )



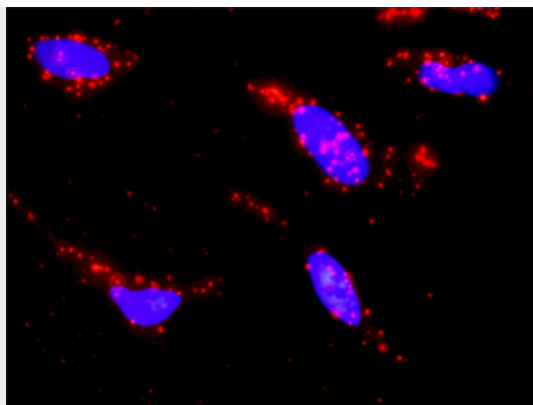
HSPA1L monoclonal antibody (M02), clone 7H6. Western Blot analysis of HSPA1L expression in PC-12 (Cat # AT2446a)



Immunoperoxidase of monoclonal antibody to HSPA1L on formalin-fixed paraffin-embedded human testis. [antibody concentration 3 ug/ml]



Detection limit for recombinant GST tagged HSPA1L is approximately 0.1ng/ml as a capture antibody.



Proximity Ligation Analysis of protein-protein interactions between MAP3K7 and HSPA1L HeLa cells were stained with anti-MAP3K7 rabbit purified polyclonal 1:1200 and anti-HSPA1L mouse monoclonal antibody 1:50. Each red dot represents the detection of protein-protein interaction complex, and nuclei were counterstained with DAPI (blue).

#### **HSPA1L Antibody (monoclonal) (M02) - Background**

This gene encodes a 70kDa heat shock protein. In conjunction with other heat shock proteins, this protein stabilizes existing proteins against aggregation and mediates the folding of newly translated proteins in the cytosol and in organelles. The gene is located in the major histocompatibility complex class III region, in a cluster with two closely related genes which also encode isoforms of the 70kDa heat shock protein.

#### **HSPA1L Antibody (monoclonal) (M02) - References**

Association of Polymorphisms of Heat Shock Protein 70 with Susceptibility to Noise-Induced Hearing Loss in the Taiwanese Population. Chang NC, et al. *Audiol Neurotol*, 2010 Aug 12. PMID 20714140. The relationship between three heat shock protein 70 gene polymorphisms and susceptibility to lung cancer. Wang Y, et al. *Clin Chem Lab Med*, 2010 Aug 13. PMID 20704535. Variation at the NFATC2 Locus Increases the Risk of Thiazolidinedione-Induced Edema in the Diabetes REduction Assessment with ramipril and rosiglitazone Medication (DREAM) Study. Bailey SD, et al. *Diabetes Care*, 2010 Jul 13. PMID 20628086. Examination of genetic polymorphisms in newborns for signatures of sex-specific prenatal selection. Ucisik-Akkaya E, et al. *Mol Hum Reprod*, 2010 Oct. PMID 20587610. [Effect of HSP70 gene polymorphism on genetic susceptibility of pneumoconiosis of coal worker] Zhou F, et al. *Wei Sheng Yan Jiu*, 2010 May. PMID 20568452.