

ICAM1 Antibody (monoclonal) (M01)**Mouse monoclonal antibody raised against a full length recombinant ICAM1.****Catalog # AT2468a****Specification**

ICAM1 Antibody (monoclonal) (M01) - Product Information

Application	WB, IP, E
Primary Accession	P05362
Other Accession	BC015969
Reactivity	Human
Host	mouse
Clonality	Monoclonal
Isotype	IgG1 kappa
Calculated MW	57825

ICAM1 Antibody (monoclonal) (M01) - Additional Information**Gene ID** 3383**Other Names**

Intercellular adhesion molecule 1, ICAM-1, Major group rhinovirus receptor, CD54, ICAM1

Target/Specificity

ICAM1 (AAH15969, 1 a.a. ~ 532 a.a) full-length recombinant protein with GST tag. MW of the GST tag alone is 26 KDa.

Dilution

WB~~1:500~1000

IP~~N/A

E~~N/A

Format

Clear, colorless solution in phosphate buffered saline, pH 7.2 .

Storage

Store at -20°C or lower. Aliquot to avoid repeated freezing and thawing.

Precautions

ICAM1 Antibody (monoclonal) (M01) is for research use only and not for use in diagnostic or therapeutic procedures.

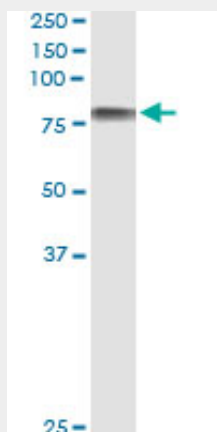
ICAM1 Antibody (monoclonal) (M01) - Protocols

Provided below are standard protocols that you may find useful for product applications.

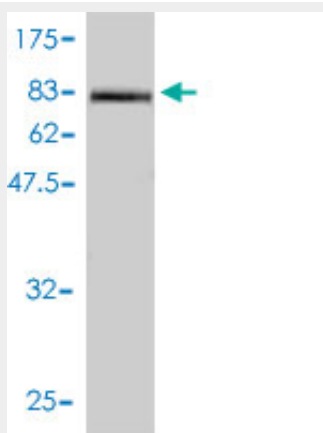
- [Western Blot](#)
- [Blocking Peptides](#)

- [Dot Blot](#)
- [Immunohistochemistry](#)
- [Immunofluorescence](#)
- [Immunoprecipitation](#)
- [Flow Cytometry](#)
- [Cell Culture](#)

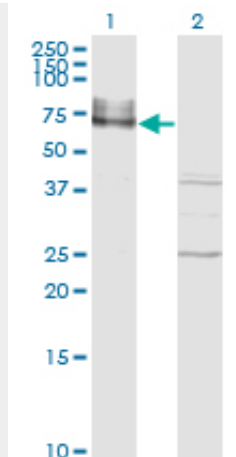
ICAM1 Antibody (monoclonal) (M01) - Images



Immunoprecipitation of ICAM1 transfected lysate using anti-ICAM1 monoclonal antibody and Protein A Magnetic Bead ([U0007](#)), and immunoblotted with ICAM1 MaxPab rabbit polyclonal antibody.



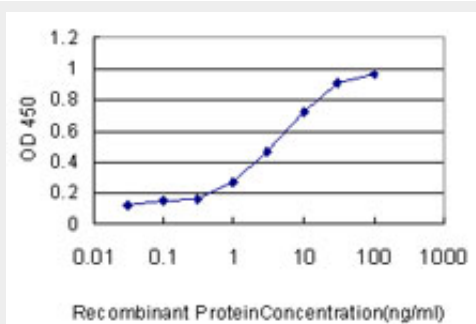
Antibody Reactive Against Recombinant Protein. Western Blot detection against Immunogen (84.26 kDa) .



Western Blot analysis of ICAM1 expression in transfected 293T cell line by ICAM1 monoclonal antibody (M01), clone 3H8-2G6.

Lane 1: ICAM1 transfected lysate (Predicted MW: 57.8 KDa).

Lane 2: Non-transfected lysate.



Detection limit for recombinant GST tagged ICAM1 is approximately 0.1ng/ml as a capture antibody.

ICAM1 Antibody (monoclonal) (M01) - Background

This gene encodes a cell surface glycoprotein which is typically expressed on endothelial cells and cells of the immune system. It binds to integrins of type CD11a / CD18, or CD11b / CD18 and is also exploited by Rhinovirus as a receptor.

ICAM1 Antibody (monoclonal) (M01) - References

1. Lipid-Induced Toxicity Stimulates Hepatocytes to Release Angiogenic Microparticles That Require Vanin-1 for Uptake by Endothelial Cells. Povero D, Eguchi A, Niesman IR, Andronikou N, de Mollerat du Jeu X, Mulya A, Berk M, Lazic M, Thapaliya S, Parola M, Patel HH, Feldstein AE. *Sci Signal*. 2013 Oct 8;6(296):ra88. doi: 10.1126/scisignal.2004512.