

ICAM3 Antibody (monoclonal) (M01)**Mouse monoclonal antibody raised against a full length recombinant ICAM3.****Catalog # AT2469a****Specification**

ICAM3 Antibody (monoclonal) (M01) - Product Information

Application	WB, IHC
Primary Accession	P32942
Other Accession	BC058903
Reactivity	Human
Host	mouse
Clonality	Monoclonal
Isotype	IgG2b kappa
Calculated MW	59541

ICAM3 Antibody (monoclonal) (M01) - Additional Information**Gene ID** 3385**Other Names**

Intercellular adhesion molecule 3, ICAM-3, CDw50, ICAM-R, CD50, ICAM3

Target/Specificity

ICAM3 (AAH58903, 30 a.a. ~ 547 a.a) full-length recombinant protein with GST tag. MW of the GST tag alone is 26 KDa.

Dilution

WB~~1:500~1000

IHC~~1:100~500

Format

Clear, colorless solution in phosphate buffered saline, pH 7.2 .

Storage

Store at -20°C or lower. Aliquot to avoid repeated freezing and thawing.

Precautions

ICAM3 Antibody (monoclonal) (M01) is for research use only and not for use in diagnostic or therapeutic procedures.

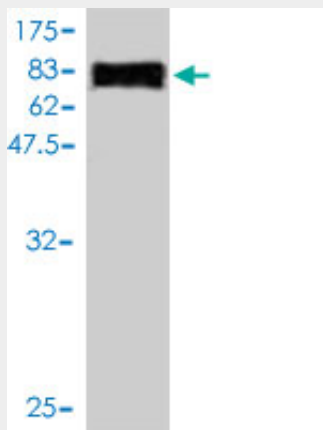
ICAM3 Antibody (monoclonal) (M01) - Protocols

Provided below are standard protocols that you may find useful for product applications.

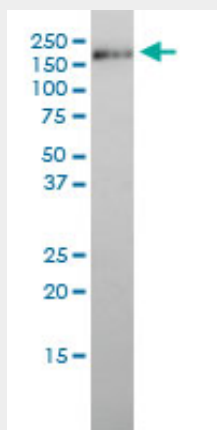
- [Western Blot](#)
- [Blocking Peptides](#)
- [Dot Blot](#)

- [Immunohistochemistry](#)
- [Immunofluorescence](#)
- [Immunoprecipitation](#)
- [Flow Cytometry](#)
- [Cell Culture](#)

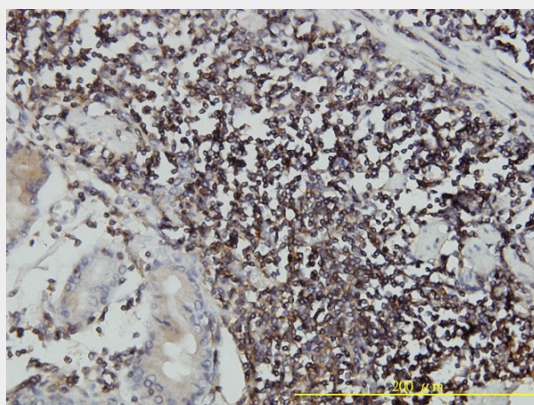
ICAM3 Antibody (monoclonal) (M01) - Images



Antibody Reactive Against Recombinant Protein. Western Blot detection against Immunogen (82.72 KDa) .



ICAM3 monoclonal antibody (M01), clone 2F8 Western Blot analysis of ICAM3 expression in HL-60 (Cat # AT2469a)



Immunoperoxidase of monoclonal antibody to ICAM3 on formalin-fixed paraffin-embedded human

stomach carcinoma tissue. [antibody concentration 3 ug/ml]

ICAM3 Antibody (monoclonal) (M01) - Background

The protein encoded by this gene is a member of the intercellular adhesion molecule (ICAM) family. All ICAM proteins are type I transmembrane glycoproteins, contain 2-9 immunoglobulin-like C2-type domains, and bind to the leukocyte adhesion LFA-1 protein. This protein is constitutively and abundantly expressed by all leucocytes and may be the most important ligand for LFA-1 in the initiation of the immune response. It functions not only as an adhesion molecule, but also as a potent signalling molecule.

ICAM3 Antibody (monoclonal) (M01) - References

Variation at the NFATC2 Locus Increases the Risk of Thiazolinedione-Induced Edema in the Diabetes REduction Assessment with ramipril and rosiglitazone Medication (DREAM) Study. Bailey SD, et al. Diabetes Care, 2010 Jul 13. PMID 20628086. Polymorphisms in innate immunity genes and risk of childhood leukemia. Han S, et al. Hum Immunol, 2010 Jul. PMID 20438785. Risk of meningioma and common variation in genes related to innate immunity. Rajaraman P, et al. Cancer Epidemiol Biomarkers Prev, 2010 May. PMID 20406964. Large-scale candidate gene analysis of spontaneous clearance of hepatitis C virus. Mosbruger TL, et al. J Infect Dis, 2010 May 1. PMID 20331378. No significant effect of orally administered chemokine receptor 1 antagonist on intercellular adhesion molecule-3 expression in relapsing--remitting multiple sclerosis patients. Reuss R, et al. Mult Scler, 2010 Mar. PMID 20086017.