

**ID1 Antibody (monoclonal) (M02)****Mouse monoclonal antibody raised against a full length recombinant ID1.****Catalog # AT2473a****Specification**

---

**ID1 Antibody (monoclonal) (M02) - Product Information**

Application	WB, IF, E
Primary Accession	<a href="#">P41134</a>
Other Accession	<a href="#">BC000613</a>
Reactivity	Human
Host	mouse
Clonality	Monoclonal
Isotype	IgG2a Kappa
Calculated MW	16133

**ID1 Antibody (monoclonal) (M02) - Additional Information****Gene ID** 3397**Other Names**

DNA-binding protein inhibitor ID-1, Class B basic helix-loop-helix protein 24, bHLHb24, Inhibitor of DNA binding 1, Inhibitor of differentiation 1, ID1, BHLHB24, ID

**Target/Specificity**

ID1 (AAH00613.1, 1 a.a. ~ 155 a.a) full-length recombinant protein with GST tag. MW of the GST tag alone is 26 KDa.

**Dilution**

WB~~1:500~1000

IF~~1:50~200

E~~N/A

**Format**

Clear, colorless solution in phosphate buffered saline, pH 7.2 .

**Storage**

Store at -20°C or lower. Aliquot to avoid repeated freezing and thawing.

**Precautions**

ID1 Antibody (monoclonal) (M02) is for research use only and not for use in diagnostic or therapeutic procedures.

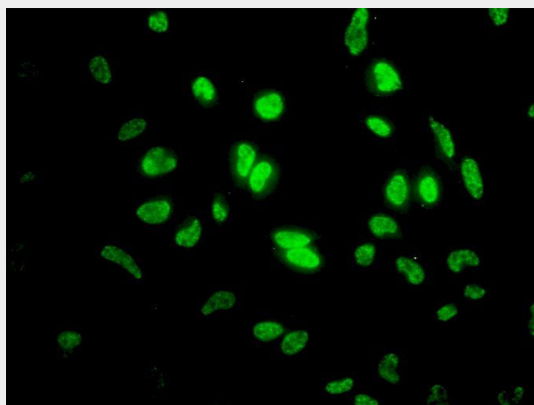
**ID1 Antibody (monoclonal) (M02) - Protocols**

Provided below are standard protocols that you may find useful for product applications.

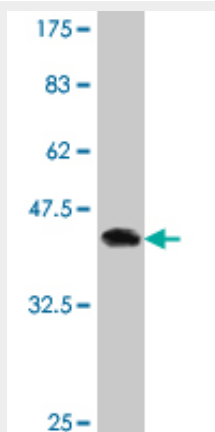
- [Western Blot](#)

- [Blocking Peptides](#)
- [Dot Blot](#)
- [Immunohistochemistry](#)
- [Immunofluorescence](#)
- [Immunoprecipitation](#)
- [Flow Cytometry](#)
- [Cell Culture](#)

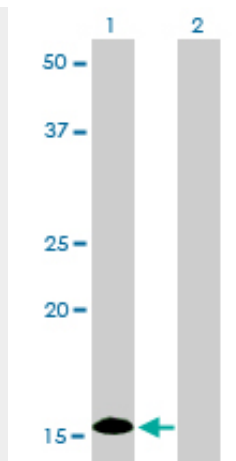
#### ID1 Antibody (monoclonal) (M02) - Images



Immunofluorescence of monoclonal antibody to ID1 on HeLa cell. [antibody concentration 10 ug/ml]



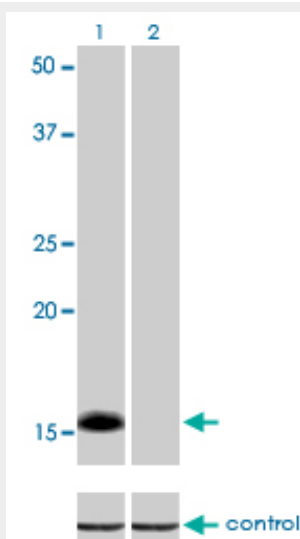
Antibody Reactive Against Recombinant Protein. Western Blot detection against Immunogen (42.79 KDa) .



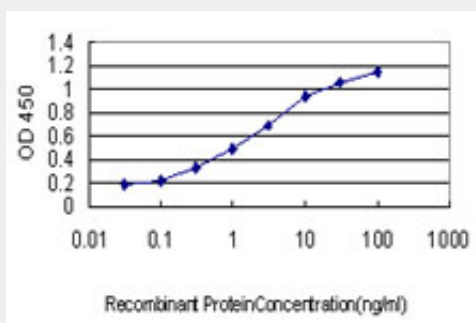
Western Blot analysis of ID1 expression in transfected 293T cell line by ID1 monoclonal antibody (M02), clone 1F7.

Lane 1: ID1 transfected lysate(16.1 KDa).

Lane 2: Non-transfected lysate.



Western blot analysis of ID1 over-expressed 293 cell line, cotransfected with ID1 Validated Chimera RNAi (Cat # AT2473a)



Detection limit for recombinant GST tagged ID1 is approximately 0.1ng/ml as a capture antibody.

### **ID1 Antibody (monoclonal) (M02) - Background**

The protein encoded by this gene is a helix-loop-helix (HLH) protein that can form heterodimers

with members of the basic HLH family of transcription factors. The encoded protein has no DNA binding activity and therefore can inhibit the DNA binding and transcriptional activation ability of basic HLH proteins with which it interacts. This protein may play a role in cell growth, senescence, and differentiation. Two transcript variants encoding different isoforms have been found for this gene.

### **ID1 Antibody (monoclonal) (M02) - References**

Smad-dependent and smad-independent induction of id1 by prostacyclin analogues inhibits proliferation of pulmonary artery smooth muscle cells in vitro and in vivo. Yang J, et al. Circ Res, 2010 Jul 23. PMID 20522807. Upregulation of SOX2, NOTCH1, and ID1 in supratentorial primitive neuroectodermal tumors: a distinct differentiation pattern from that of medulloblastomas. Phi JH, et al. J Neurosurg Pediatr, 2010 Jun. PMID 20515335. ID1 enhances docetaxel cytotoxicity in prostate cancer cells through inhibition of p21. Geng H, et al. Cancer Res, 2010 Apr 15. PMID 20388787. The core binding factor CBF negatively regulates skeletal muscle terminal differentiation. Philipot O, et al. PLoS One, 2010 Feb 25. PMID 20195544. Inhibitor of differentiation 1 (ID1) promotes cell survival and proliferation of prostate epithelial cells. Schmidt M, et al. Cell Mol Biol Lett, 2010 Jun. PMID 20186495.