

IL11RA Antibody (monoclonal) (M01)**Mouse monoclonal antibody raised against a full length recombinant IL11RA.****Catalog # AT2501a****Specification**

IL11RA Antibody (monoclonal) (M01) - Product Information

Application	WB, E
Primary Accession	Q14626
Other Accession	BC003110
Reactivity	Human
Host	mouse
Clonality	Monoclonal
Isotype	IgG2a kappa
Calculated MW	45222

IL11RA Antibody (monoclonal) (M01) - Additional Information**Gene ID** 3590**Other Names**

Interleukin-11 receptor subunit alpha, IL-11 receptor subunit alpha, IL-11R subunit alpha, IL-11R-alpha, IL-11RA, IL11RA

Target/Specificity

IL11RA (AAH03110, 1 a.a. ~ 422 a.a) full-length recombinant protein with GST tag. MW of the GST tag alone is 26 KDa.

Dilution

WB~~1:500~1000

E~~N/A

Format

Clear, colorless solution in phosphate buffered saline, pH 7.2 .

Storage

Store at -20°C or lower. Aliquot to avoid repeated freezing and thawing.

Precautions

IL11RA Antibody (monoclonal) (M01) is for research use only and not for use in diagnostic or therapeutic procedures.

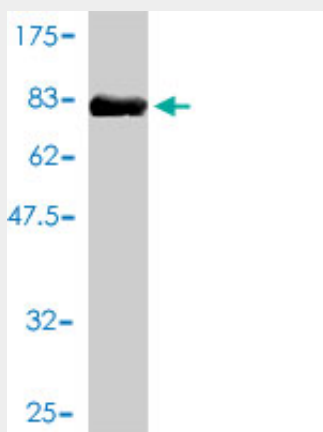
IL11RA Antibody (monoclonal) (M01) - Protocols

Provided below are standard protocols that you may find useful for product applications.

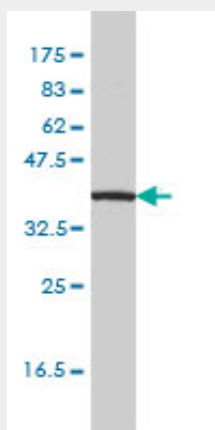
- [Western Blot](#)
- [Blocking Peptides](#)

- [Dot Blot](#)
- [Immunohistochemistry](#)
- [Immunofluorescence](#)
- [Immunoprecipitation](#)
- [Flow Cytometry](#)
- [Cell Culture](#)

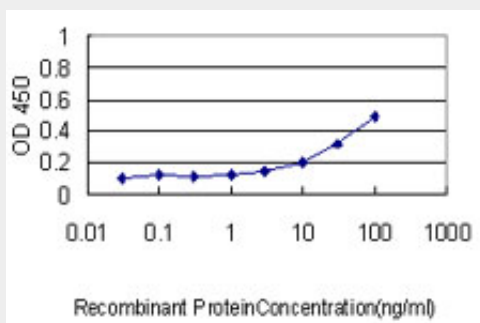
IL11RA Antibody (monoclonal) (M01) - Images



Antibody Reactive Against Recombinant Protein. Western Blot detection against Immunogen (72.16 kDa) .



IL11RA monoclonal antibody (M01), clone 2D4-F4 Western Blot analysis of IL11RA expression in Jurkat (Cat # AT2501a)



Detection limit for recombinant GST tagged IL11RA is approximately 0.3 ng/ml as a capture antibody.

IL11RA Antibody (monoclonal) (M01) - Background

Interleukin 11 is a stromal cell-derived cytokine that belongs to a family of pleiotropic and redundant cytokines that use the gp130 transducing subunit in their high affinity receptors. This gene encodes the IL-11 receptor, which is a member of the hematopoietic cytokine receptor family. This particular receptor is very similar to ciliary neurotrophic factor, since both contain an extracellular region with a 2-domain structure composed of an immunoglobulin-like domain and a cytokine receptor-like domain. Alternative splicing has been observed at this locus, and three variants encoding two different isoforms have been identified.

IL11RA Antibody (monoclonal) (M01) - References

Variation at the NFATC2 Locus Increases the Risk of Thiazolinedinedione-Induced Edema in the Diabetes REduction Assessment with ramipril and rosiglitazone Medication (DREAM) Study. Bailey SD, et al. Diabetes Care, 2010 Jul 13. PMID 20628086. Polymorphisms in innate immunity genes and risk of childhood leukemia. Han S, et al. Hum Immunol, 2010 Jul. PMID 20438785. Risk of meningioma and common variation in genes related to innate immunity. Rajaraman P, et al. Cancer Epidemiol Biomarkers Prev, 2010 May. PMID 20406964. Gene-centric association signals for lipids and apolipoproteins identified via the HumanCVD BeadChip. Talmud PJ, et al. Am J Hum Genet, 2009 Nov. PMID 19913121. Common variation in genes related to innate immunity and risk of adult glioma. Rajaraman P, et al. Cancer Epidemiol Biomarkers Prev, 2009 May. PMID 19423540.