

IL1F7 Antibody (monoclonal) (M06)**Mouse monoclonal antibody raised against a full length recombinant IL1F7.****Catalog # AT2510a****Specification**

IL1F7 Antibody (monoclonal) (M06) - Product Information

Application	WB, IHC, E
Primary Accession	O9NZH6
Other Accession	BC020637
Reactivity	Human
Host	Mouse
Clonality	Monoclonal
Isotype	IgG1 Kappa
Calculated MW	24126

IL1F7 Antibody (monoclonal) (M06) - Additional Information**Gene ID** 27178**Other Names**

Interleukin-37, FIL1 zeta, IL-1X, Interleukin-1 family member 7, IL-1F7, Interleukin-1 homolog 4, IL-1H, IL-1H4, Interleukin-1 zeta, IL-1 zeta, Interleukin-1-related protein, IL-1RP1, Interleukin-23, IL-37, IL37, FIL1Z, IL1F7, IL1H4, IL1RP1

Target/Specificity

IL1F7 (AAH20637, 1 a.a. ~ 218 a.a) full-length recombinant protein with GST tag. MW of the GST tag alone is 26 KDa.

Dilution

WB~~1:500~1000

Format

Clear, colorless solution in phosphate buffered saline, pH 7.2 .

Storage

Store at -20°C or lower. Aliquot to avoid repeated freezing and thawing.

Precautions

IL1F7 Antibody (monoclonal) (M06) is for research use only and not for use in diagnostic or therapeutic procedures.

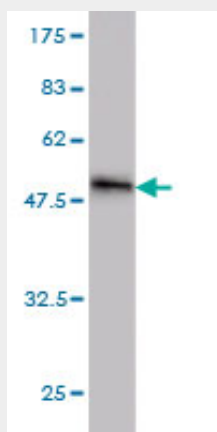
IL1F7 Antibody (monoclonal) (M06) - Protocols

Provided below are standard protocols that you may find useful for product applications.

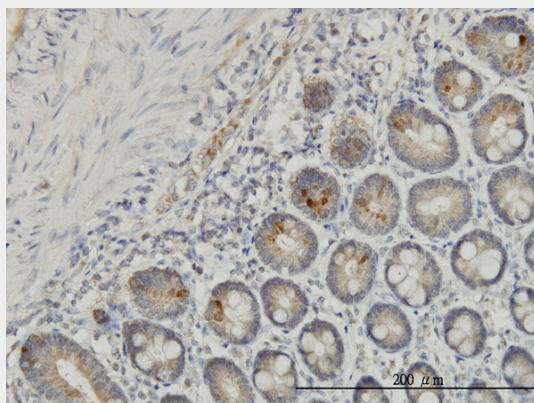
- [Western Blot](#)
- [Blocking Peptides](#)

- [Dot Blot](#)
- [Immunohistochemistry](#)
- [Immunofluorescence](#)
- [Immunoprecipitation](#)
- [Flow Cytometry](#)
- [Cell Culture](#)

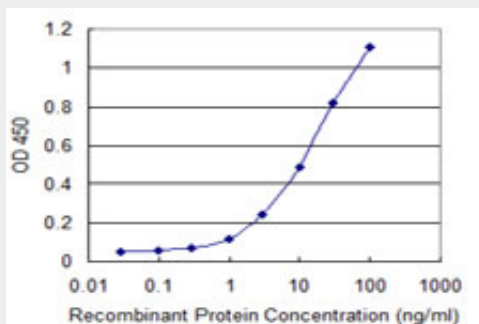
IL1F7 Antibody (monoclonal) (M06) - Images



Antibody Reactive Against Recombinant Protein. Western Blot detection against Immunogen (49.72 KDa) .



Immunoperoxidase of monoclonal antibody to IL1F7 on formalin-fixed paraffin-embedded human small Intestine. [antibody concentration 3 ug/ml]



Detection limit for recombinant GST tagged IL1F7 is 0.3 ng/ml as a capture antibody.

IL1F7 Antibody (monoclonal) (M06) - Background

The protein encoded by this gene is a member of the interleukin 1 cytokine family. This cytokine can bind to, and may be a ligand for interleukin 18 receptor (IL18R1/IL-1Rrp). This cytokine also binds to interleukin 18 binding protein (IL18BP), an inhibitory binding protein of interleukin 18 (IL18), and subsequently forms a complex with IL18 receptor beta subunit, and through which it inhibits the activity of IL18. This gene along with eight other interleukin 1 family genes form a cytokine gene cluster on chromosome 2. Five alternatively spliced transcript variants encoding distinct isoforms have been reported.

IL1F7 Antibody (monoclonal) (M06) - References

New genetic associations detected in a host response study to hepatitis B vaccine. Davila S, et al. Genes Immun, 2010 Apr. PMID 20237496. The interleukin-1 family gene polymorphisms in Korean patients with rheumatoid arthritis. Jung MY, et al. Scand J Rheumatol, 2010 May. PMID 20141484. Association of IL-1F7 gene with susceptibility to human leukocyte antigen-B27 positive ankylosing spondylitis in Han Chinese population. Pan F, et al. Clin Chim Acta, 2010 Jan. PMID 19874811. Interleukin 1 polymorphisms in patients with ankylosing spondylitis in Korea. Kim TJ, et al. J Rheumatol, 2008 Aug. PMID 18484691. The IL-1 family member 7b translocates to the nucleus and down-regulates proinflammatory cytokines. Sharma S, et al. J Immunol, 2008 Apr 15. PMID 18390730.