

IL22RA1 Antibody (monoclonal) (M03)**Mouse monoclonal antibody raised against a full length recombinant IL22RA1.****Catalog # AT2516a****Specification**

IL22RA1 Antibody (monoclonal) (M03) - Product Information

Application	WB, E
Primary Accession	Q8N6P7
Other Accession	BC029273
Reactivity	Human
Host	mouse
Clonality	Monoclonal
Isotype	IgG3 Kappa
Calculated MW	63077

IL22RA1 Antibody (monoclonal) (M03) - Additional Information**Gene ID** 58985**Other Names**

Interleukin-22 receptor subunit alpha-1, IL-22 receptor subunit alpha-1, IL-22R-alpha-1, IL-22RA1, Cytokine receptor class-II member 9, Cytokine receptor family 2 member 9, CRF2-9, ZcytoR11, IL22RA1, IL22R

Target/Specificity

IL22RA1 (AAH29273, 19 a.a. ~ 574 a.a) full-length recombinant protein with GST tag. MW of the GST tag alone is 26 KDa.

Dilution

WB~~1:500~1000

E~~N/A

Format

Clear, colorless solution in phosphate buffered saline, pH 7.2 .

Storage

Store at -20°C or lower. Aliquot to avoid repeated freezing and thawing.

Precautions

IL22RA1 Antibody (monoclonal) (M03) is for research use only and not for use in diagnostic or therapeutic procedures.

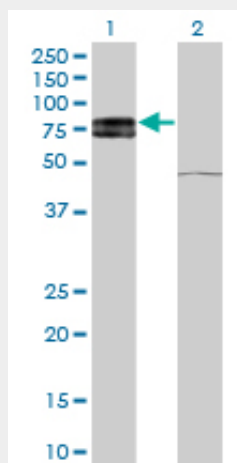
IL22RA1 Antibody (monoclonal) (M03) - Protocols

Provided below are standard protocols that you may find useful for product applications.

- [Western Blot](#)

- [Blocking Peptides](#)
- [Dot Blot](#)
- [Immunohistochemistry](#)
- [Immunofluorescence](#)
- [Immunoprecipitation](#)
- [Flow Cytometry](#)
- [Cell Culture](#)

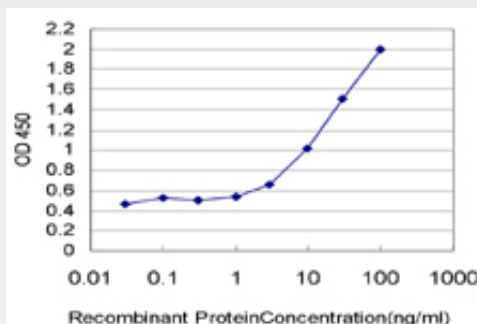
IL22RA1 Antibody (monoclonal) (M03) - Images



Western Blot analysis of IL22RA1 expression in transfected 293T cell line by IL22RA1 monoclonal antibody (M03), clone 6B5.

Lane 1: IL22RA1 transfected lysate(63.1 KDa).

Lane 2: Non-transfected lysate.



Detection limit for recombinant GST tagged IL22RA1 is approximately 1ng/ml as a capture antibody.

IL22RA1 Antibody (monoclonal) (M03) - Background

The protein encoded by this gene belongs to the class II cytokine receptor family, and has been shown to be a receptor for interleukin 22 (IL22). IL22 receptor is a protein complex that consists of this protein and interleukin 10 receptor, beta (IL10BR/CRFB4), a subunit also shared by the receptor complex for interleukin 10 (IL10). This gene and interleukin 28 receptor, alpha (IL28RA) form a cytokine receptor gene cluster in the chromosomal region 1p36.

IL22RA1 Antibody (monoclonal) (M03) - References

New genetic associations detected in a host response study to hepatitis B vaccine. Davila S, et al.

Genes Immun, 2010 Apr. PMID 20237496. IL-17 and IL-22 mediate IL-20 subfamily cytokine production in cultured keratinocytes via increased IL-22 receptor expression. Tohyama M, et al. Eur J Immunol, 2009 Oct. PMID 19731362. Expression pattern of mda-7/IL-24 receptors in liver cancer cell lines. Zhu H, et al. Hepatobiliary Pancreat Dis Int, 2009 Aug. PMID 19666410. New activation modus of STAT3: a tyrosine-less region of the interleukin-22 receptor recruits STAT3 by interacting with its coiled-coil domain. Dumoutier L, et al. J Biol Chem, 2009 Sep 25. PMID 19632985. Polymorphisms in the interleukin-22 receptor alpha-1 gene are associated with severe chronic rhinosinusitis. Endam LM, et al. Otolaryngol Head Neck Surg, 2009 May. PMID 19393422.