

**IL27 Antibody (monoclonal) (M01)****Mouse monoclonal antibody raised against a partial recombinant IL27.****Catalog # AT2518a****Specification**

---

**IL27 Antibody (monoclonal) (M01) - Product Information**

Application	WB, IP
Primary Accession	<a href="#">Q8NEV9</a>
Other Accession	<a href="#">NM_145659</a>
Reactivity	Human
Host	mouse
Clonality	Monoclonal
Isotype	IgG1 Kappa
Calculated MW	27493

**IL27 Antibody (monoclonal) (M01) - Additional Information****Gene ID** 246778**Other Names**

Interleukin-27 subunit alpha, IL-27 subunit alpha, IL-27-A, IL27-A, Interleukin-30, p28, IL27, IL27A, IL30

**Target/Specificity**

IL27 (NP\_663634, 177 a.a. ~ 243 a.a) partial recombinant protein with GST tag. MW of the GST tag alone is 26 KDa.

**Dilution**

WB~~1:500~1000

IP~~N/A

**Format**

Clear, colorless solution in phosphate buffered saline, pH 7.2 .

**Storage**

Store at -20°C or lower. Aliquot to avoid repeated freezing and thawing.

**Precautions**

IL27 Antibody (monoclonal) (M01) is for research use only and not for use in diagnostic or therapeutic procedures.

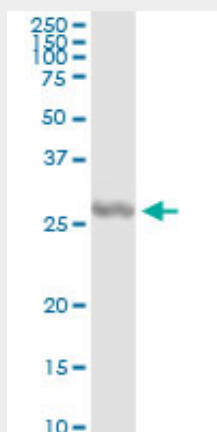
**IL27 Antibody (monoclonal) (M01) - Protocols**

Provided below are standard protocols that you may find useful for product applications.

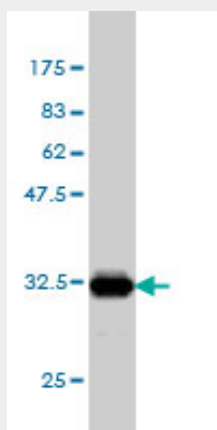
- [Western Blot](#)
- [Blocking Peptides](#)

- [Dot Blot](#)
- [Immunohistochemistry](#)
- [Immunofluorescence](#)
- [Immunoprecipitation](#)
- [Flow Cytometry](#)
- [Cell Culture](#)

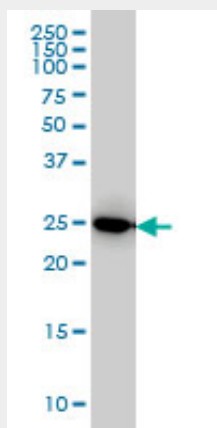
### IL27 Antibody (monoclonal) (M01) - Images



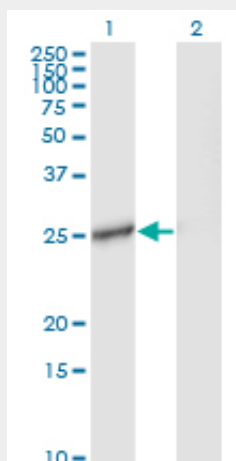
Immunoprecipitation of IL27 transfected lysate using anti-IL27 monoclonal antibody and Protein A Magnetic Bead ([U0007](#)), and immunoblotted with IL27 MaxPab rabbit polyclonal antibody.



Antibody Reactive Against Recombinant Protein. Western Blot detection against Immunogen (33.11 KDa) .



IL27 monoclonal antibody (M01), clone 3F12 Western Blot analysis of IL27 expression in HeLa (Cat # AT2518a )



Western Blot analysis of IL27 expression in transfected 293T cell line by IL27 monoclonal antibody (M01), clone 3F12.

Lane 1: IL27 transfected lysate(27.5 KDa).

Lane 2: Non-transfected lysate.

#### IL27 Antibody (monoclonal) (M01) - Background

The protein encoded by this gene is one of the subunits of a heterodimeric cytokine complex. This protein is related to interleukin 12A (IL12A). It interacts with Epstein-Barr virus induced gene 3 (EBI3), a protein similar to interleukin 12B (IL12B), and forms a complex that has been shown to drive rapid expansion of naive but not memory CD4(+) T cells. The complex is also found to synergize strongly with interleukin 12 to trigger interferon gamma (IFNG) production of naive CD4(+) T cells. The biological effects of this cytokine are mediated by the class I cytokine receptor (WSX1/TCRR).

#### IL27 Antibody (monoclonal) (M01) - References

Interleukin-9 polymorphism in infants with respiratory syncytial virus infection: an opposite effect in boys and girls. Schuurhof A, et al. *Pediatr Pulmonol*, 2010 Jun. PMID 20503287. A pivotal role for interleukin-27 in CD8+ T cell functions and generation of cytotoxic T lymphocytes. Morishima N, et al. *J Biomed Biotechnol*, 2010. PMID 20454646. Activation of IL-27 p28 gene transcription by interferon regulatory factor 8 in cooperation with interferon regulatory factor 1. Zhang J, et al. *J Biol Chem*, 2010 Jul 9. PMID 20435892. Cytokines involved in interferon-gamma production by human macrophages. Robinson CM, et al. *J Innate Immun*, 2009 Dec. PMID 20375623. Activation of human bronchial epithelial cells by inflammatory cytokines IL-27 and TNF-alpha: implications for immunopathophysiology of airway inflammation. Cao J, et al. *J Cell Physiol*, 2010 Jun. PMID 20301193.