

IL6 Antibody (monoclonal) (M01)

Mouse monoclonal antibody raised against a full length recombinant IL6.

Catalog # AT2520a

Specification

IL6 Antibody (monoclonal) (M01) - Product Information

Application	WB
Primary Accession	P05231
Other Accession	NM_000600
Reactivity	Human
Host	mouse
Clonality	Monoclonal
Isotype	IgG2b Kappa
Calculated MW	23718

IL6 Antibody (monoclonal) (M01) - Additional Information

Gene ID 3569

Other Names

Interleukin-6, IL-6, B-cell stimulatory factor 2, BSF-2, CTL differentiation factor, CDF, Hybridoma growth factor, Interferon beta-2, IFN-beta-2, IL6, IFNB2

Target/Specificity

IL6 (NP_000591, 29 a.a. ~ 212 a.a) recombinant protein.

Dilution

WB ~ 1:500 ~ 1000

Format

Clear, colorless solution in phosphate buffered saline, pH 7.2 .

Storage

Store at -20°C or lower. Aliquot to avoid repeated freezing and thawing.

Precautions

IL6 Antibody (monoclonal) (M01) is for research use only and not for use in diagnostic or therapeutic procedures.

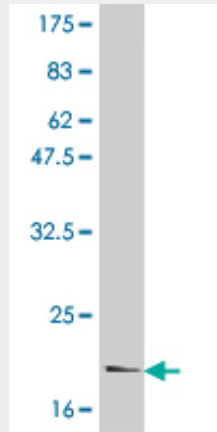
IL6 Antibody (monoclonal) (M01) - Protocols

Provided below are standard protocols that you may find useful for product applications.

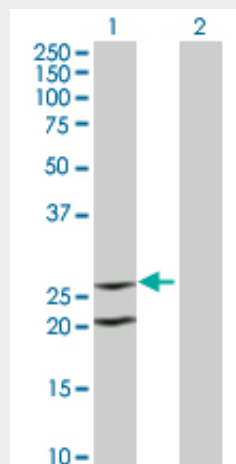
- [Western Blot](#)
- [Blocking Peptides](#)
- [Dot Blot](#)
- [Immunohistochemistry](#)

- [Immunofluorescence](#)
- [Immunoprecipitation](#)
- [Flow Cytometry](#)
- [Cell Culture](#)

IL6 Antibody (monoclonal) (M01) - Images



Antibody Reactive Against Recombinant Protein. Western Blot detection against Immunogen (21 kDa) .



Western Blot analysis of IL6 expression in transfected 293T cell line by IL6 monoclonal antibody (M01), clone 3E4.

Lane 1: IL6 transfected lysate(23.7 kDa).
Lane 2: Non-transfected lysate.

IL6 Antibody (monoclonal) (M01) - Background

IL6 is an immunoregulatory cytokine that activates a cell surface signaling assembly composed of IL6, IL6RA (IL6R; MIM 147880), and the shared signaling receptor gp130 (IL6ST; MIM 600694) (Boulanger et al., 2003 [PubMed 12829785]).[supplied by OMIM]