

**IL6ST Antibody (monoclonal) (M02)****Mouse monoclonal antibody raised against a partial recombinant IL6ST.****Catalog # AT2523a****Specification**

---

**IL6ST Antibody (monoclonal) (M02) - Product Information**

Application	WB, E
Primary Accession	<a href="#">P40189</a>
Other Accession	<a href="#">NM_002184</a>
Reactivity	Human
Host	mouse
Clonality	Monoclonal
Isotype	IgG2a Kappa
Calculated MW	103537

**IL6ST Antibody (monoclonal) (M02) - Additional Information****Gene ID** 3572**Other Names**

Interleukin-6 receptor subunit beta, IL-6 receptor subunit beta, IL-6R subunit beta, IL-6R-beta, IL-6RB, CDw130, Interleukin-6 signal transducer, Membrane glycoprotein 130, gp130, Oncostatin-M receptor subunit alpha, CD130, IL6ST

**Target/Specificity**

IL6ST (NP\_002175, 23 a.a. ~ 122 a.a) partial recombinant protein with GST tag. MW of the GST tag alone is 26 KDa.

**Dilution**

WB~~1:500~1000

E~~N/A

**Format**

Clear, colorless solution in phosphate buffered saline, pH 7.2 .

**Storage**

Store at -20°C or lower. Aliquot to avoid repeated freezing and thawing.

**Precautions**

IL6ST Antibody (monoclonal) (M02) is for research use only and not for use in diagnostic or therapeutic procedures.

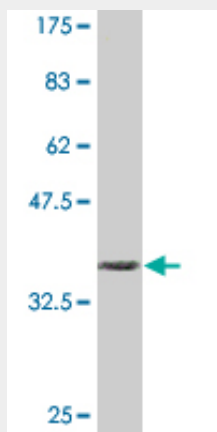
**IL6ST Antibody (monoclonal) (M02) - Protocols**

Provided below are standard protocols that you may find useful for product applications.

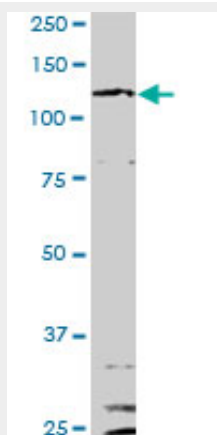
- [Western Blot](#)

- [Blocking Peptides](#)
- [Dot Blot](#)
- [Immunohistochemistry](#)
- [Immunofluorescence](#)
- [Immunoprecipitation](#)
- [Flow Cytometry](#)
- [Cell Culture](#)

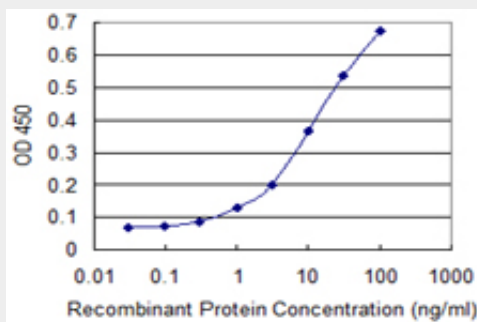
## IL6ST Antibody (monoclonal) (M02) - Images



Antibody Reactive Against Recombinant Protein. Western Blot detection against Immunogen (36.74 KDa) .



IL6ST monoclonal antibody (M02), clone 4A4. Western Blot analysis of IL6ST expression in HepG2 (Cat # AT2523a)



Detection limit for recombinant GST tagged IL6ST is 0.3 ng/ml as a capture antibody.

## **IL6ST Antibody (monoclonal) (M02) - Background**

The protein encoded by this gene is a signal transducer shared by many cytokines, including interleukin 6 (IL6), ciliary neurotrophic factor (CNTF), leukemia inhibitory factor (LIF), and oncostatin M (OSM). This protein functions as a part of the cytokine receptor complex. The activation of this protein is dependent upon the binding of cytokines to their receptors. vIL6, a protein related to IL6 and encoded by the Kaposi sarcoma-associated herpesvirus, can bypass the interleukin 6 receptor (IL6R) and directly activate this protein. Knockout studies in mice suggest that this gene plays a critical role in regulating myocyte apoptosis. Alternatively spliced transcript variants encoding distinct isoforms have been described. A related pseudogene has been identified on chromosome 17.

## **IL6ST Antibody (monoclonal) (M02) - References**

Evaluation of candidate stromal epithelial cross-talk genes identifies association between risk of serous ovarian cancer and TERT, a cancer susceptibility hot-spot. Johnatty SE, et al. PLoS Genet, 2010 Jul 8. PMID 20628624. Variation at the NFATC2 Locus Increases the Risk of Thiazolinedione-Induced Edema in the Diabetes REduction Assessment with ramipril and rosiglitazone Medication (DREAM) Study. Bailey SD, et al. Diabetes Care, 2010 Jul 13. PMID 20628086. Continuous glycoprotein-130-mediated signal transducer and activator of transcription-3 activation promotes inflammation, left ventricular rupture, and adverse outcome in subacute myocardial infarction. Hilfiker-Kleiner D, et al. Circulation, 2010 Jul 13. PMID 20585009. Sortilin facilitates signaling of ciliary neurotrophic factor and related helical type 1 cytokines targeting the gp130/leukemia inhibitory factor receptor beta heterodimer. Larsen JV, et al. Mol Cell Biol, 2010 Sep. PMID 20584990. Crystal structure of the entire ectodomain of gp130: insights into the molecular assembly of the tall cytokine receptor complexes. Xu Y, et al. J Biol Chem, 2010 Jul 9. PMID 20489211.