

ILF2 Antibody (monoclonal) (M01)**Mouse monoclonal antibody raised against a partial recombinant ILF2.****Catalog # AT2527a****Specification**

ILF2 Antibody (monoclonal) (M01) - Product Information

Application	WB, E
Primary Accession	Q12905
Other Accession	NM_004515
Reactivity	Human
Host	mouse
Clonality	Monoclonal
Isotype	IgG1 Kappa
Calculated MW	43062

ILF2 Antibody (monoclonal) (M01) - Additional Information**Gene ID** 3608**Other Names**

Interleukin enhancer-binding factor 2, Nuclear factor of activated T-cells 45 kDa, ILF2, NF45

Target/Specificity

ILF2 (NP_004506, 151 a.a. ~ 250 a.a) partial recombinant protein with GST tag. MW of the GST tag alone is 26 KDa.

Dilution

WB~~1:500~1000

E~~N/A

Format

Clear, colorless solution in phosphate buffered saline, pH 7.2 .

Storage

Store at -20°C or lower. Aliquot to avoid repeated freezing and thawing.

Precautions

ILF2 Antibody (monoclonal) (M01) is for research use only and not for use in diagnostic or therapeutic procedures.

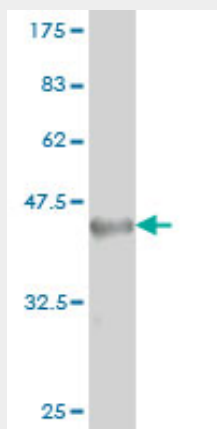
ILF2 Antibody (monoclonal) (M01) - Protocols

Provided below are standard protocols that you may find useful for product applications.

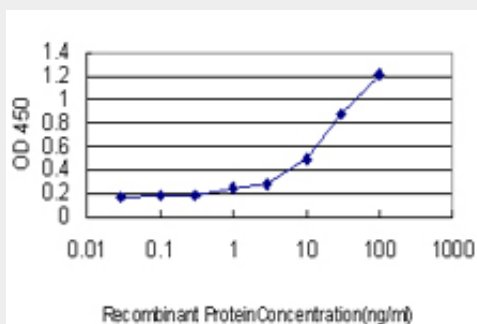
- [Western Blot](#)
- [Blocking Peptides](#)
- [Dot Blot](#)

- [Immunohistochemistry](#)
- [Immunofluorescence](#)
- [Immunoprecipitation](#)
- [Flow Cytometry](#)
- [Cell Culture](#)

ILF2 Antibody (monoclonal) (M01) - Images



Antibody Reactive Against Recombinant Protein. Western Blot detection against Immunogen (36.74 kDa) .



Detection limit for recombinant GST tagged ILF2 is approximately 1ng/ml as a capture antibody.

ILF2 Antibody (monoclonal) (M01) - Background

Nuclear factor of activated T-cells (NFAT) is a transcription factor required for T-cell expression of the interleukin 2 gene. NFAT binds to a sequence in the interleukin 2 gene enhancer known as the antigen receptor response element 2. In addition, NFAT can bind RNA and is an essential component for encapsidation and protein priming of hepatitis B viral polymerase. NFAT is a heterodimer of 45 kDa and 90 kDa proteins, the smaller of which is the product of this gene. The encoded protein binds strongly to the 90 kDa protein and stimulates its ability to enhance gene expression.

ILF2 Antibody (monoclonal) (M01) - References

1. Dynamic interplay between O-GlcNAcylation and GSK-3-dependent phosphorylation. Wang Z, Pandey A, Hart GW. Mol Cell Proteomics. 2007 Aug;6(8):1365-79. Epub 2007 May 16.