

IMPDH1 Antibody (monoclonal) (M01)

Mouse monoclonal antibody raised against a partial recombinant IMPDH1.

Catalog # AT2529a

Specification**IMPDH1 Antibody (monoclonal) (M01) - Product Information**

Application	WB, E
Primary Accession	P20839
Other Accession	NM_000883
Reactivity	Human
Host	Mouse
Clonality	Monoclonal
Isotype	IgG1 Kappa
Calculated MW	55406

IMPDH1 Antibody (monoclonal) (M01) - Additional Information

Gene ID 3614

Other Names

Inosine-5'-monophosphate dehydrogenase 1 {ECO:0000255|HAMAP-Rule:MF_03156}, IMP dehydrogenase 1 {ECO:0000255|HAMAP-Rule:MF_03156}, IMPD 1 {ECO:0000255|HAMAP-Rule:MF_03156}, IMPDH 1 {ECO:0000255|HAMAP-Rule:MF_03156}, 111205 {ECO:0000255|HAMAP-Rule:MF_03156}, IMPDH-I, IMPDH1 {ECO:0000255|HAMAP-Rule:MF_03156}, IMPD1

Target/Specificity

IMPDH1 (NP_000874, 201 a.a. ~ 300 a.a) partial recombinant protein with GST tag. MW of the GST tag alone is 26 KDa.

Dilution

WB~~1:500~1000

E~~N/A

Format

Clear, colorless solution in phosphate buffered saline, pH 7.2 .

Storage

Store at -20°C or lower. Aliquot to avoid repeated freezing and thawing.

Precautions

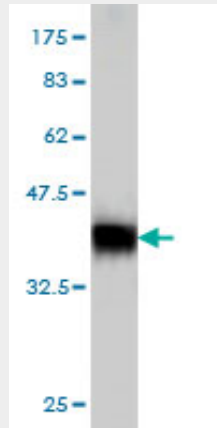
IMPDH1 Antibody (monoclonal) (M01) is for research use only and not for use in diagnostic or therapeutic procedures.

IMPDH1 Antibody (monoclonal) (M01) - Protocols

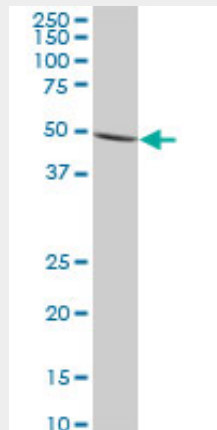
Provided below are standard protocols that you may find useful for product applications.

- [Western Blot](#)
- [Blocking Peptides](#)
- [Dot Blot](#)
- [Immunohistochemistry](#)
- [Immunofluorescence](#)
- [Immunoprecipitation](#)
- [Flow Cytometry](#)
- [Cell Culture](#)

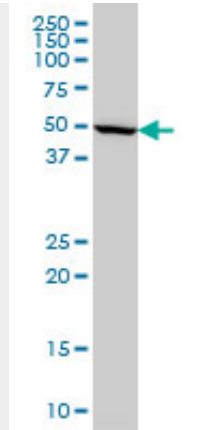
IMPDH1 Antibody (monoclonal) (M01) - Images



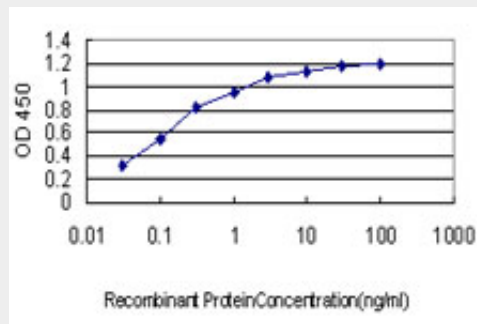
Antibody Reactive Against Recombinant Protein. Western Blot detection against Immunogen (36.74 KDa) .



IMPDH1 monoclonal antibody (M01), clone 3G6. Western Blot analysis of IMPDH1 expression in HeLa ((Cat # AT2529a)



IMPDH1 monoclonal antibody (M01), clone 3G6 Western Blot analysis of IMPDH1 expression in HeLa S3 NE (Cat # AT2529a)



Detection limit for recombinant GST tagged IMPDH1 is approximately 0.03ng/ml as a capture antibody.

IMPDH1 Antibody (monoclonal) (M01) - Background

The protein encoded by this gene acts as a homotetramer to regulate cell growth. The encoded protein is an enzyme that catalyzes the synthesis of xanthine monophosphate (XMP) from inosine-5'-monophosphate (IMP). This is the rate-limiting step in the de novo synthesis of guanine nucleotides. Defects in this gene are a cause of retinitis pigmentosa type 10 (RP10). Several transcript variants encoding different isoforms have been found for this gene.

IMPDH1 Antibody (monoclonal) (M01) - References

1. Novel Direct Targets of miR-19a Identified in Breast Cancer Cells by a Quantitative Proteomic Approach. Ouchida M, Kanzaki H, Ito S, Hanafusa H, Jitsumori Y, Tamaru S, Shimizu K. PLoS One. 2012;7(8):e44095. Epub 2012 Aug 30.
2. Hydroxamic acid derivatives of mycophenolic acid inhibit histone deacetylase at the cellular level. Batovska DI, Kim DH, Mitsunashi S, Cho YS, Kwon HJ, Ubukata M. Biosci Biotechnol Biochem. 2008 Oct;72(10):2623-31. Epub 2008 Oct 7.