

ISL1 Antibody (monoclonal) (M01)

Mouse monoclonal antibody raised against a partial recombinant ISL1.

Catalog # AT2560a

Specification

ISL1 Antibody (monoclonal) (M01) - Product Information

Application	WB
Primary Accession	P61371
Other Accession	NM_002202
Reactivity	Human
Host	mouse
Clonality	Monoclonal
Isotype	IgG2a Kappa
Calculated MW	39036

ISL1 Antibody (monoclonal) (M01) - Additional Information

Gene ID 3670

Other Names

Insulin gene enhancer protein ISL-1, Islet-1, ISL1

Target/Specificity

ISL1 (NP_002193, 63 a.a. ~ 159 a.a) partial recombinant protein with GST tag. MW of the GST tag alone is 26 KDa.

Dilution

WB~~1:500~1000

Format

Clear, colorless solution in phosphate buffered saline, pH 7.2 .

Storage

Store at -20°C or lower. Aliquot to avoid repeated freezing and thawing.

Precautions

ISL1 Antibody (monoclonal) (M01) is for research use only and not for use in diagnostic or therapeutic procedures.

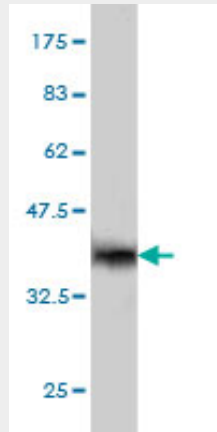
ISL1 Antibody (monoclonal) (M01) - Protocols

Provided below are standard protocols that you may find useful for product applications.

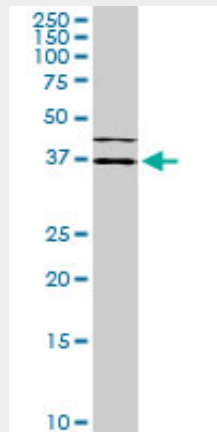
- [Western Blot](#)
- [Blocking Peptides](#)
- [Dot Blot](#)
- [Immunohistochemistry](#)

- [Immunofluorescence](#)
- [Immunoprecipitation](#)
- [Flow Cytometry](#)
- [Cell Culture](#)

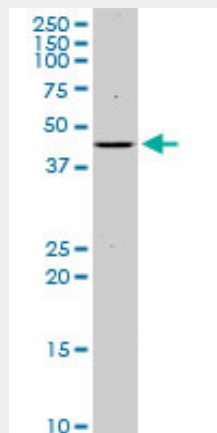
ISL1 Antibody (monoclonal) (M01) - Images



Antibody Reactive Against Recombinant Protein. Western Blot detection against Immunogen (36.41 kDa) .

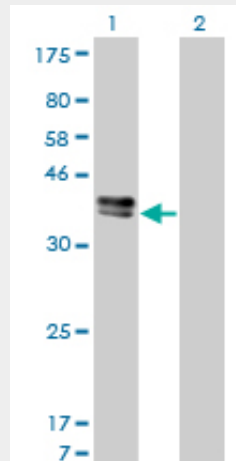


ISL1 monoclonal antibody (M01), clone 1A3. Western Blot analysis of ISL1 expression in HeLa S3 NE (Cat # AT2560a)



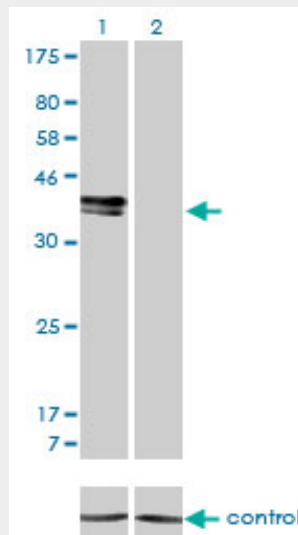
ISL1 monoclonal antibody (M01), clone 1A3. Western Blot analysis of ISL1 expression in

K-562((Cat # AT2560a)



Western Blot analysis of ISL1 expression in transfected 293T cell line by ISL1 monoclonal antibody (M01), clone 1A3.

Lane 1: ISL1 transfected lysate(38.7 kDa).
 Lane 2: Non-transfected lysate.



Detection limit for recombinant GST tagged ISL1 is approximately 30ng/ml as a capture antibody.

ISL1 Antibody (monoclonal) (M01) - Background

This gene encodes a member of the LIM/homeodomain family of transcription factors. The encoded protein binds to the enhancer region of the insulin gene, among others, and may play an important role in regulating insulin gene expression. The encoded protein is central to the development of pancreatic cell lineages and may also be required for motor neuron generation. Mutations in this gene have been associated with maturity-onset diabetes of the young.

ISL1 Antibody (monoclonal) (M01) - References

New mutations in ZFPM2/FOG2 gene in tetralogy of Fallot and double outlet right ventricle. De Luca A, et al. Clin Genet, 2010 Aug 2. PMID 20807224. Common variation in ISL1 confers genetic susceptibility for human congenital heart disease. Stevens KN, et al. PLoS One, 2010 May 26. PMID 20520780. A Three-Stage Genome-Wide Association Study of General Cognitive Ability: Hunting the

Small Effects. Davis OS, et al. Behav Genet, 2010 Mar 21. PMID 20306291. Early first trimester human embryonic cardiac Islet-1 progenitor cells and cardiomyocytes: Immunohistochemical and electrophysiological characterization. Genead R, et al. Stem Cell Res, 2010 Jan. PMID 19896915. The LIM-homeodomain protein ISL1 activates insulin gene promoter directly through synergy with BETA2. Zhang H, et al. J Mol Biol, 2009 Sep 25. PMID 19619559.