

**ITGA2 Antibody (monoclonal) (M01)****Mouse monoclonal antibody raised against a partial recombinant ITGA2.****Catalog # AT2563a****Specification**

---

**ITGA2 Antibody (monoclonal) (M01) - Product Information**

Application	WB, IF, E
Primary Accession	<a href="#">P17301</a>
Other Accession	<a href="#">NM_002203</a>
Reactivity	Human
Host	mouse
Clonality	Monoclonal
Isotype	IgG1 Kappa
Calculated MW	129296

**ITGA2 Antibody (monoclonal) (M01) - Additional Information****Gene ID** 3673**Other Names**

Integrin alpha-2, CD49 antigen-like family member B, Collagen receptor, Platelet membrane glycoprotein Ia, GPIa, VLA-2 subunit alpha, CD49b, ITGA2, CD49B

**Target/Specificity**

ITGA2 (NP\_002194.2, 30 a.a. ~ 119 a.a) partial recombinant protein with GST tag. MW of the GST tag alone is 26 KDa.

**Dilution**

WB~~1:500~1000

IF~~1:50~200

E~~N/A

**Format**

Clear, colorless solution in phosphate buffered saline, pH 7.2 .

**Storage**

Store at -20°C or lower. Aliquot to avoid repeated freezing and thawing.

**Precautions**

ITGA2 Antibody (monoclonal) (M01) is for research use only and not for use in diagnostic or therapeutic procedures.

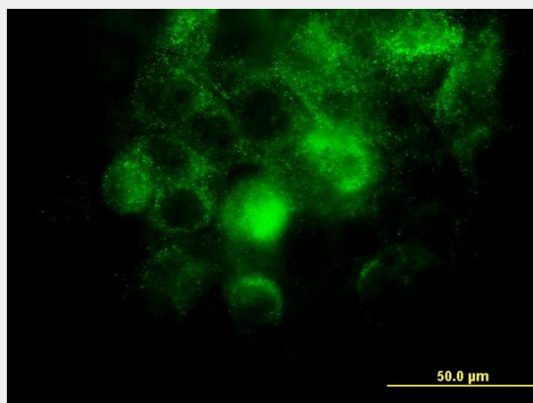
**ITGA2 Antibody (monoclonal) (M01) - Protocols**

Provided below are standard protocols that you may find useful for product applications.

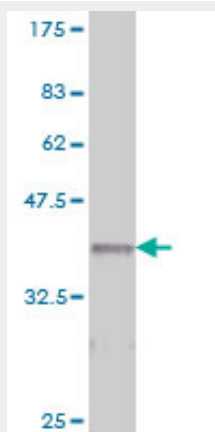
- [Western Blot](#)

- [Blocking Peptides](#)
- [Dot Blot](#)
- [Immunohistochemistry](#)
- [Immunofluorescence](#)
- [Immunoprecipitation](#)
- [Flow Cytometry](#)
- [Cell Culture](#)

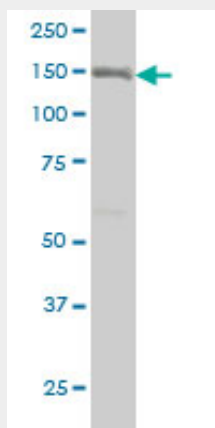
#### ITGA2 Antibody (monoclonal) (M01) - Images



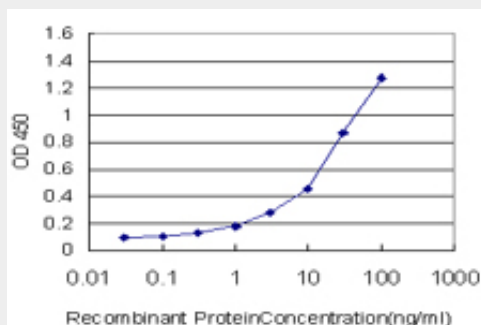
Immunofluorescence of monoclonal antibody to ITGA2 on A-431 cell. [antibody concentration 10 ug/ml]



Antibody Reactive Against Recombinant Protein. Western Blot detection against Immunogen (35.53 KDa) .



ITGA2 monoclonal antibody (M01), clone 2B6 Western Blot analysis of ITGA2 expression in A-431 (Cat # AT2563a)



Detection limit for recombinant GST tagged ITGA2 is approximately 0.3ng/ml as a capture antibody.

### **ITGA2 Antibody (monoclonal) (M01) - Background**

This gene product belongs to the integrin alpha chain family. Integrins are heterodimeric integral membrane glycoproteins composed of a distinct alpha chain and a common beta chain. They are found on a wide variety of cell types including, T cells, fibroblasts and platelets. Integrins are involved in cell adhesion and also participate in cell-surface mediated signalling.

### **ITGA2 Antibody (monoclonal) (M01) - References**

1. Identification and Characterization of the Integrin  $\alpha_2\beta_1$  Binding Motif in Chondroadherin Mediating Cell Attachment. Haglund L, Tillgren V, Addis L, Wenglen C, Recklies A, Heinegard D. J Biol Chem. 2011 Feb 4;286(5):3925-34. Epub 2010 Dec 2.